



## IMPORTANT WARRANTY & INSTALLATION INSTRUCTIONS ATTACHED

*Please Forward All Attached Information to Consumer  
Warranty Not Valid Unless Returned to CORSA Exhaust*

We ask that you take a few moments to complete our warranty registration form:

TO ACTIVATE YOUR LIMITED LIFETIME WARRANTY GO TO:

**[CORSAPERFORMANCE.COM/WARRANTY](http://CORSAPERFORMANCE.COM/WARRANTY)**



For Full-Color Installation Instructions, Please Visit:

**[CORSAPERFORMANCE.COM](http://CORSAPERFORMANCE.COM) and Search by Part Number**

Please be sure to review the enclosed instructions prior to beginning the installation process. If you have any questions about the enclosed parts, instructions or encounter a problem during Installation: **CALL CORSA PERFORMANCE TECHNICAL ASSISTANCE AT 800.486.0999**



**Please take time to read and understand these installation instructions.**

CORSA recommends that installation of this system be performed by a qualified service center or professional muffler installer who has the necessary equipment, tools and experienced personnel. However, if you decide to perform this install, the use of a hoist and an additional person will be required.

**CAUTION:** Never work on a hot exhaust system. Allow time for the vehicle to cool. Always wear eye protection when working under a vehicle.

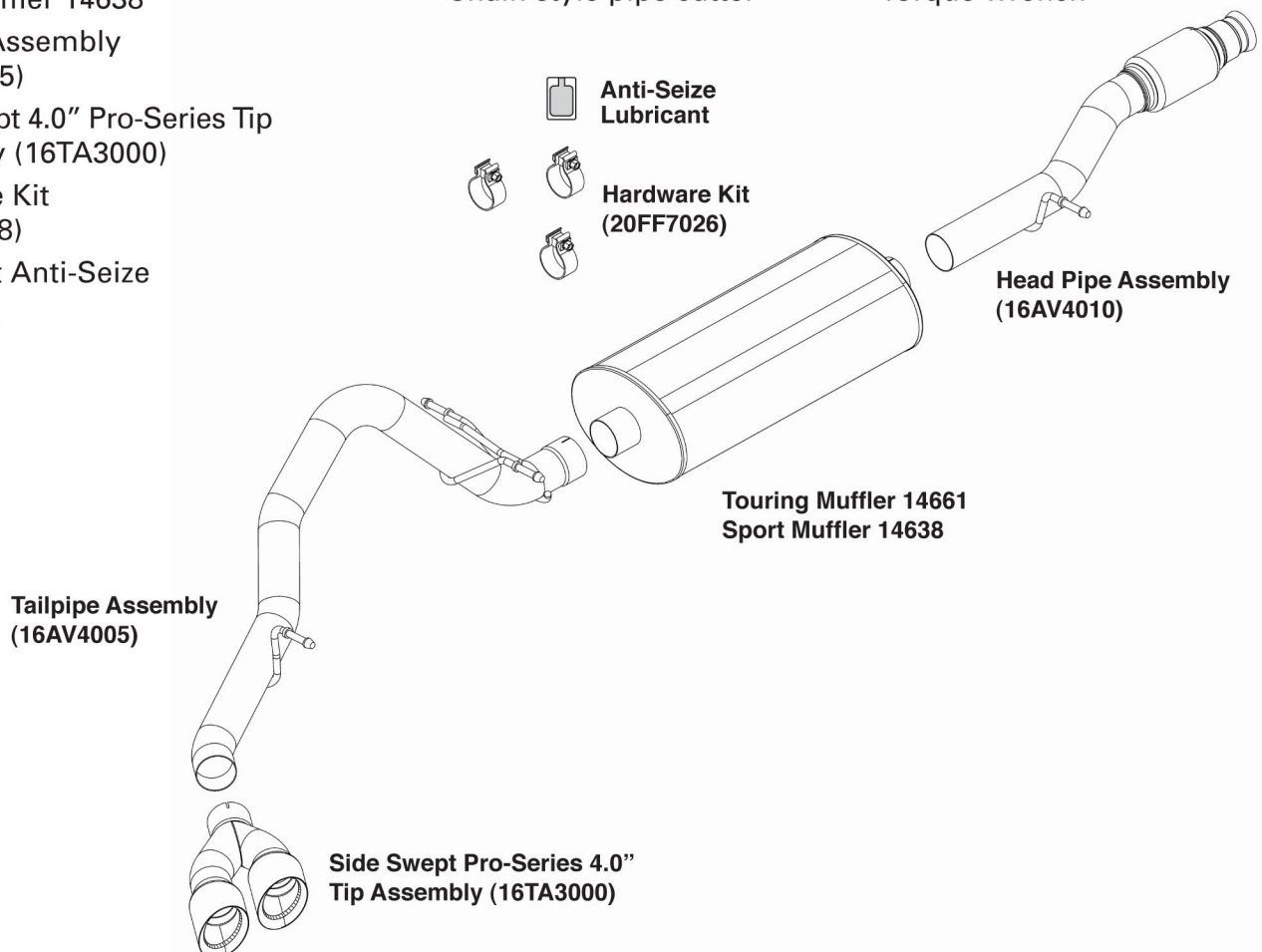
**Please confirm that all parts are present before beginning the factory exhaust system removal and CORSA exhaust system installation.**

## Bill of Materials:

- Head Pipe Assembly (16AV4010)
- Touring Muffler 14661 or Sport Muffler 14638
- Tailpipe Assembly (16AV4005)
- Side Swept 4.0" Pro-Series Tip Assembly (16TA3000)
- Hardware Kit (16TA7018)
- (1) Packet Anti-Seize Lubricant

## Recommended Tools:

- Safety Glasses
- 13mm, 15mm socket and ratchet
- Chain style pipe cutter
- Grommet pullers
- Vehicle Spare tire removal kit
- Soapy water
- Torque wrench



## Removal of Stock System:

- 1) Lower the spare tire by following the instructions in the owner's manual.
- 2) Remove the heat shield using a 15mm socket and ratchet. **(See Fig's A, B & C)**
- 3) Place a chain style cutter around the tailpipe at the tunnel muffler exit and cut the tailpipe at this location. **(See Fig. D)**
- 4) Remove the grommets from the tailpipe hangers using grommet pullers or similar device. **(See Fig's E & F) NOTE: Using a soapy water solution on the grommet hole will make the job easier.**
- 5) Remove the tailpipe section from the vehicle by lifting the tailpipe over the rear axle and backwards under the rear bumper. Be sure to move the rear differential vent hose out of the way when performing this operation. **(See Fig's G & H)**
- 6) Use a 13mm socket and ratchet to remove the spherical clamp of the head-pipe. Then remove the grommet at the hanger location and remove the tunnel muffler section away from the vehicle. This completes the removal of the stock system. **(See Fig. I) NOTE: Using a soapy water solution on the grommet hole will make the job easier.**



FIG. A



FIG. B

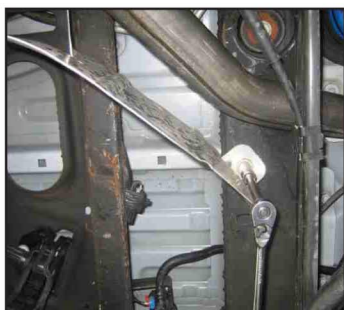


FIG. C



FIG. D

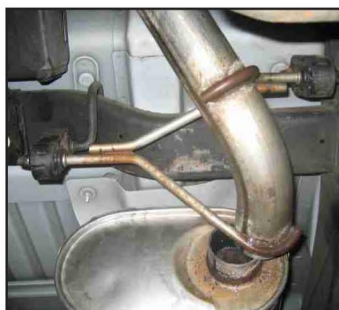


FIG. E



FIG. F

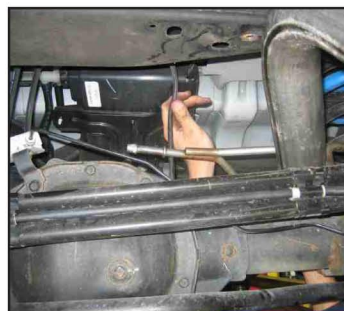


FIG. G



FIG. H



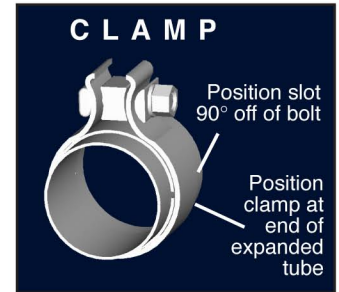
FIG. I

For technical assistance,  
Call (800) 486.0999



## Installation of CORSA Exhaust System:

**NOTE:** Apply the anti-seize lubricant (supplied) to the threads **ONLY** of all the clamps and flange bolts. Failure to follow this procedure can cause nuts to seize on clamps and potentially destroy threads. After applying anti-seize lubricant, be sure to thoroughly clean hands as lubricant will tarnish stainless steel. All clamps should be tightened using a properly calibrated Torque Wrench. Using an air impact gun will damage the clamp and reduce its ability to effectively seal the joint. It may also cause the joint to separate thereby causing damage to your exhaust system and your vehicle.



- 1) Locate the CORSA Head Pipe assembly and slide the spherical joint on the factory pipe. Reuse the factory spherical clamp and loosely snug the spherical joint. Insert the hanger in to the factory grommet. **(See Fig's J, K & L)**

**Note:** Using a soapy solution on the grommet hole will make the job easier.

- 2) Slide a supplied 3" TORCA clamp over the inlet of the CORSA muffler. Make sure the drain hole is facing down. Slide the muffler onto the Head Pipe and pre-tighten the clamp. **(See Fig's M, N & O)**

- 3) Slide a supplied 3" TORCA clamp over the inlet of the CORSA Tailpipe. From the rear of the vehicle slide the pipe over the axle while holding the rear differential vent hose out of the way. Insert the pipe over the muffler exit and place the hangers into the factory grommets. **(See Fig's P, Q, R, S & T)**

**Note:** Using a soapy solution on the grommet hole will make the job easier.



FIG. J



FIG. K



FIG. L



FIG. M



FIG. N



FIG. O



FIG. P



FIG. Q





FIG. R

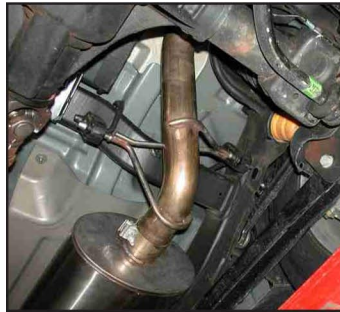


FIG. S



FIG. T

- 4) Replace the heat shield using a 15mm socket and ratchet.
- 5) Slide a 3" TORCA clamp over the tip assembly and place the tip onto the end of the tailpipe. Pre-tighten the clamp at this time. **(See Fig's U, V, W, X & Y)**
- 6) Starting from the front of the CORSA exhaust system tighten all TORCA clamps to **45 ft.-lbs** and all spherical clamps to **21 ft.-lbs.** using a torque wrench.
- 7) Replace the spare tire and its components to the pre-removal condition.
- 8) **It is strongly suggested that all clamps be checked and tightened after road testing the vehicle once the system has cooled.**



FIG. U



FIG. V



FIG. W

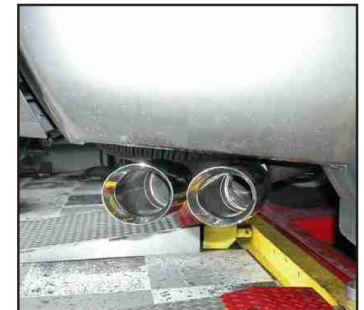


FIG. X

**Technical Assistance: Call 800.486.0999.**

**NOTE:** During cold weather start-ups, you may experience an exhaust sound that is deeper and louder in tone than usual. This is temporary and will diminish to normal levels once your engine has reached its normal operating temperature.

**NOTE:** Immediately following the installation of your CORSA exhaust system, you may experience a trace of smoke after initial start-up. **DO NOT** be alarmed. The smoke is caused by the burning of a small amount of forming oil residue used in the manufacturing process.

If you have any questions about the installation process, call CORSA Performance and ask one of our Sales & Technical Service Representatives. Do not attempt to make any modifications to parts as this will void your warranty.