

INSTALLATION MANUAL

11630

Level of Difficulty

Moderate

Installation difficulty levels are based on time and effort involved and may vary depending on the installer level of expertise, condition of the vehicle and proper tools and equipment.

Weight Carrying Capacity

Gross trailer weight (GTW)	2,000 lbs.
Tongue weight (TW)	200 lbs.

Parts List

Item	Qty	Description
1	1	Trailer hitch
2	4	Carriage bolt, 7/16"
3	4	Square hole spacer, 2-1/4" x .88" x 1/4"
4	4	Serrated-flange nut, 7/16"
5	4	Fishwire, 7/16"

Tools Required

Socket, 11/16"	Drill
Socket, 10mm	Drill bit, 1/2"
Ratchet	Marker
Flathead screwdriver	--

* For a tools reference guide visit curtmfg.com/trailer-hitch-installation

⚠ WARNING

Never exceed the vehicle manufacturer's recommended towing capacity.

All non-trailer (wheel-less) loads applied to this product must be supported by stabilizing straps (part #18050). Please see the CURT catalog or visit us online at www.curtmfg.com for further information.

Product Photo



NOTICE

Visit www.curtmfg.com for a full-color copy of this instruction manual, as well as helpful videos, guides and much more!

Before you begin installation, read all instructions thoroughly.

Proper tools will improve the quality of installation and reduce the time required.

Periodic inspection of the trailer hitch should be performed to ensure all mounting hardware remains tight and structural components are secure.

To help prevent damage to the product or vehicle, refer to the specified torque specifications when securing hardware during the installation process.

SAFETY INSTRUCTIONS

Safety glasses should be worn at all times while installing this product.

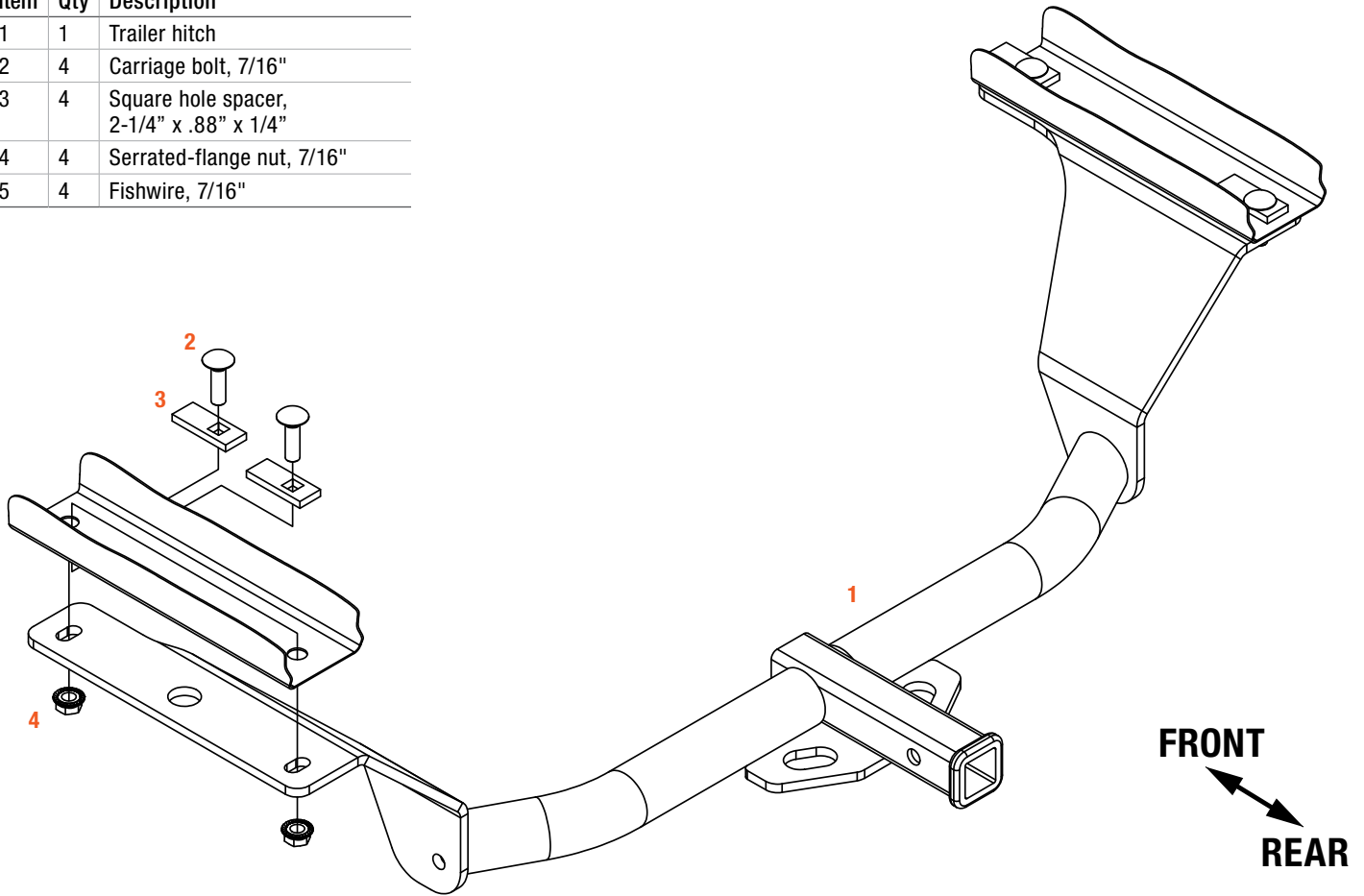
Product Registration and Warranty

CURT stands behind our products with industry-leading warranties. To get copies of the product warranties, register your purchase or provide feedback, visit: warranty.curtgroup.com/surveys

ASSEMBLY

Parts List

Item	Qty	Description
1	1	Trailer hitch
2	4	Carriage bolt, 7/16"
3	4	Square hole spacer, 2-1/4" x .88" x 1/4"
4	4	Serrated-flange nut, 7/16"
5	4	Fishwire, 7/16"



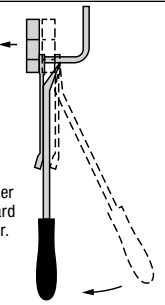
RUBBER ISOLATOR REMOVAL DIAGRAM

This technique can be used if exhaust hanger removal pliers are not available.

Using a 5/8" open end wrench, slide the wrench up to the rubber isolator, cradling the hanger rod as shown.

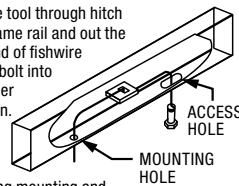
Place the flat edge of a pry bar between the wrench and the hanger stop or hanger rod. Then simply rotate the pry bar toward the wrench to remove the rubber isolator.

Note: Using a lubricant or soapy water on the hanger rod and the rubber isolator helps removal.



FISHWIRE TECHNIQUE

Insert coiled end of fishwire tool through hitch mounting hole in vehicle frame rail and out the access hole. Pass coiled end of fishwire through spacer and thread bolt into coil. Kink wire to keep spacer separate from bolt as shown. Pull fishwire, spacer and bolt through frame and out mounting hole. Use fishwire to guide hitch during mounting and prevent loss of bolt or spacer inside frame rail.

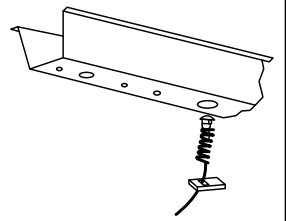


REVERSE PULL FISHWIRE TECHNIQUE

Attach the fishwire to the carriage bolt and slide the spacer onto the fishwire.

Push the bolt through the hole followed by the spacer, as shown.

Pull the bolt back into position, protruding from the frame.



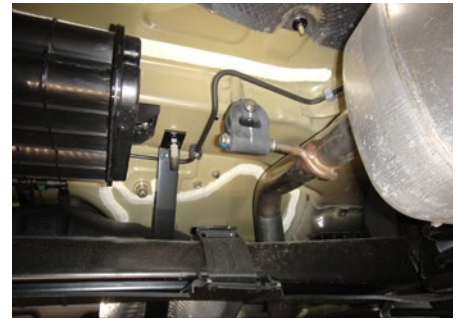
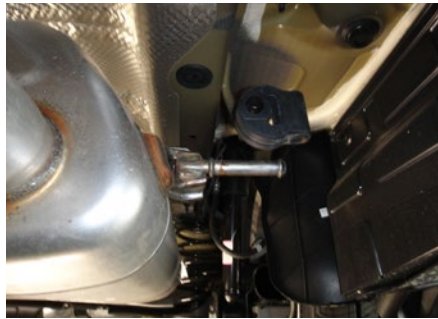
Step 1

Remove underbody panel from the driver-side rear frame rail using a small screwdriver and 10mm socket.



Step 2

Support the exhaust and carefully lower by removing the three rubber isolators.



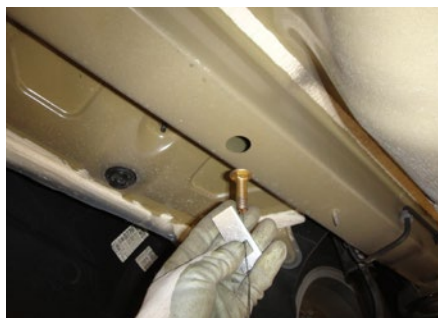
Step 3

Remove the heat shield nut from the bottom of the passenger-side frame rail and flatten the heat shield against the frame rail. Remove the rubber plug from the bottom of each frame rail. Return the removed parts to vehicle owner.



Step 4

Reverse fishwire a 7/16" carriage bolt (#2) and square hole spacer (#3) into the existing access hole in the frame rail on each side of the vehicle.



Step 5

Raise the hitch into location over the bolts, carefully remove fishwires and secure the hitch with 7/16" serrated flange nuts (#4). Mark the rearward-most hole on each frame rail. Carefully remove the nuts, reinstall the fishwires and lower the hitch.



Step 6

Drill rearmost attachment holes in marked area. Push the hardware currently in the access hole towards the front of the vehicle, taking care not to lose the fishwire. Fishwire the remaining hardware into the drilled hole and pull all hardware into position.



Step 7

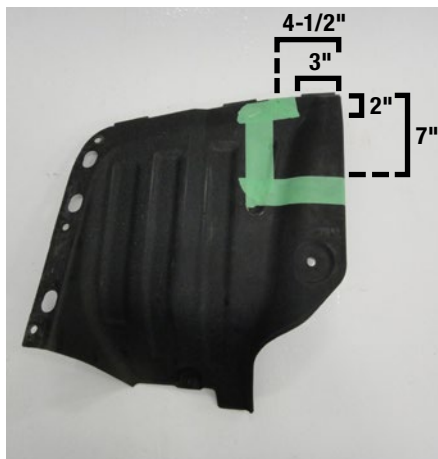
Raise the hitch into position over the 7/16" carriage bolts (#2), carefully remove fishwires and secure the hitch with the 7/16" serrated flange nuts (#4).

Torque 7/16" hardware to 59 ft-lbs.



Step 8

Reinstall the exhaust lowered in step 2. Trim the lower body panel removed in step 1 using the trim diagram for reference and reinstall.



Final Installed Image



TOWING BASICS & SAFETY INFORMATION

For information on safely towing your trailer, visit curtmfg.com/understanding-towing.