

# INSTALLATION MANUAL

## Level of Difficulty

Moderate

## Electrical Ratings

Signal circuits	5.0-amps per side
Tail / Running Circuits	7.5-amps total

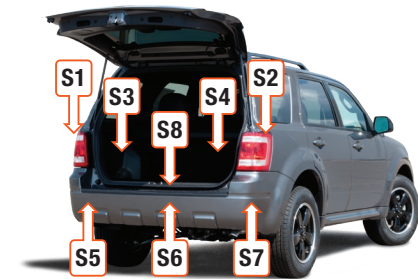
Check vehicle owner's manual or contact the vehicle manufacturer for more information.

## Wiring Location(s)

S1 and S3

## Wiring Location Guide\* for SUVs and Vans (S)

S1	Behind driver side taillight housing
S2	Behind passenger side taillight housing
S3	Behind driver side rear access panel
S4	Behind passenger side rear access panel
S5	Behind driver side rear bumper
S6	Behind center of rear bumper
S7	Behind passenger side rear bumper
S8	Under rear floor panel



\* Representative vehicle shown

## Tools Required

Ratchet	Utility knife
Socket, 10mm	Wire crimper
Socket extension	Wire stripper
Panel trim removal tool	--

## Product Registration and Warranty

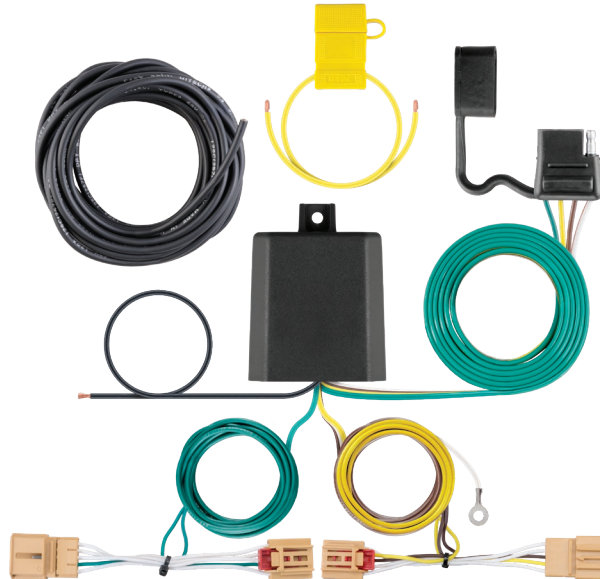
CURT Group stands behind our products with industry-leading warranties. Provide feedback and help us to improve our products by registering your purchase at: [warranty.curtgroup.com/surveys](http://warranty.curtgroup.com/surveys)

## ⚠ WARNING

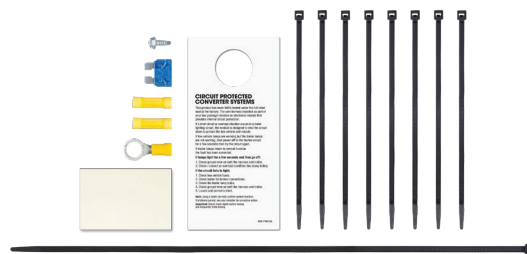
Do not exceed product rating or tow vehicle lamp load rating, whichever is lower.

The battery connection must be fuse-protected, 15-amp max. Exceeding the product rating can cause loss of warranty, overheating and potential fire.

## Product Photo



## Hardware Photo



## NOTICE

Before you begin installation, read all instructions thoroughly.

Proper tools will improve the quality of installation and reduce the time required.

All steps must be followed to ensure the product will function properly. Once installed, test for proper function by using a test light or connecting a properly wired trailer.

## Maintenance

Periodic inspection of all wires and connections should be performed to ensure there is no visible damage or loose connections.

### Step 1

Open the rear hatch.

Remove all floor coverings.

Remove the scuff panel by pulling out on the bottom and then up. Take care not to damage the alignment tabs on the back.

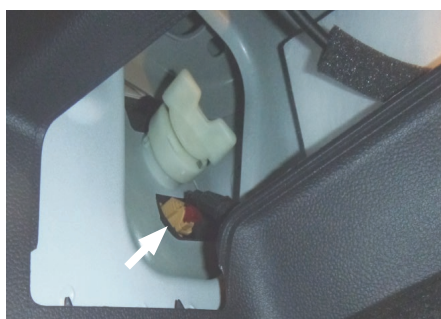


### Step 2

Starting on the driver side, locate and remove the fastener from the side trim panel. Carefully pull out on the interior side panel to locate the vehicle taillight wiring harness. Take care not to damage the alignment tabs on the back.

Locate the vehicle taillight wiring harness connector. The connector will be similar to the ones on the custom wiring harness. Separate the connector from the taillight housing taking care not to damage the locking tabs.

Insert the custom wiring harness end with the yellow wire between the separated connectors. Make sure the connectors are fully inserted with locking tabs in place.



### Step 3

Locate a suitable grounding point near the connector such as an existing screw with nut in the vehicle frame or drill a 3/32" pilot hole for the provided screw. The area should be free of rust, dirt and paint. Secure the white ground wire using the ring terminal and provided screw.

#### **⚠ WARNING**

Check for miscellaneous items that may be hidden behind or under any surface before drilling to avoid damage and / or personal injury.

#### Step 4

Route the custom wiring harness end with the green wire down behind the interior side panel and out to the passenger side behind the removed scuff panel. Repeat step 2 on the passenger side using the harness end with the green wire.

Locate a flat spot inside the vehicle, near the taillight. Adhere the black converter box using the provided double-sided tape.

---

#### Step 5

Route the black power wire from the vehicle battery as shown on the last page of this manual.

When in use, route the 4-flat to the center of the vehicle and out of the trunk. When not in use, roll up and store in a convenient, out of the way location inside the trunk. Secure any loose wires with the provided cable ties.

Reinstall all items removed during install. Install the provided 4-flat dust cover to help prevent corrosion.



# POWERED CONVERTER LEAD INSTRUCTION SHEET

## FICHE DE CONSIGNES DU CONVERTISSEUR D'ALIMENTATION

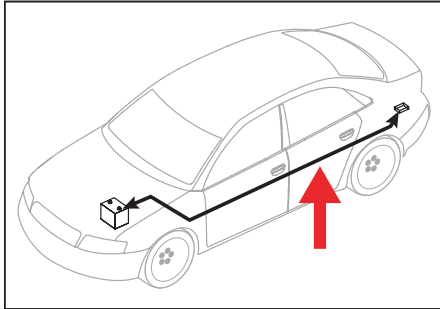
### HOJA DE INSTRUCCIONES DEL CONDUCTOR DEL ADAPTADOR ALIMENTADO POR BATERÍA

#### **NOTICE** AVIS / AVISO

Illustrations are for reference only. Battery location may differ depending on the vehicle.

Les images ne sont fournies qu'à des fins de référence. L'emplacement de la batterie peut varier en fonction du véhicule.

Las ilustraciones son solo para referencia. La ubicación de la batería puede variar según el vehículo.



#### **WARNING** AVERTISSEMENT / ADVERTENCIA

Route 12 GA wire to vehicle battery location, taking care to avoid any pinch points and hot or rotating components.

Acheminer le câble de calibre 12 à la batterie du véhicule en prenant soin d'éviter les points de pincement et les éléments chauds ou pivotants.

Pase el cable calibre 12 hacia la ubicación de la batería del vehículo, con cuidado de evitar atascos y componentes calientes o giratorios.

#### **WARNING** AVERTISSEMENT / ADVERTENCIA

To avoid personal injury or property damage, check for miscellaneous items that may be behind or under any surface before drilling.

Pour éviter les blessures et les dommages matériels, vérifier les divers articles qui peuvent se trouver derrière ou sous la surface avant de percer.

Para evitar lesiones personales o daños materiales, verifique que no haya ningún elemento detrás o debajo de la superficie antes de perforar.

#### **NOTICE** AVIS / AVISO

1. This converter system is to be used only on 12 volt negative ground systems.
2. Secure power wire to vehicle chassis using cable ties provided.
3. When passing the power wire through sheet metal, use an existing grommet, add a grommet or use silicone to protect the power wire from sharp edges.
4. Overall T-connector design may differ from illustration. The illustration should be used for power lead instruction only. Illustration is not to scale.

1. Ce système de convertisseur ne doit être utilisé qu'avec une prise de masse de polarité négative de 12 volts.
2. Fixer le câble d'alimentation au châssis du véhicule à l'aide des courroies d'attache de câble fournies.
3. Utiliser un œillet existant, ajouter un œillet ou appliquer du silicone pour protéger le câble d'alimentation des rebords tranchants au moment de le passer à travers la tôle.
4. La disposition générale du connecteur en T peut différer de l'illustration. Celle-ci ne doit être utilisée que pour le convertisseur d'alimentation. L'illustration n'est pas à l'échelle.

1. Este sistema de adaptadores solo se debe utilizar con sistemas con polo negativo a masa de 12 voltios.
2. Sujete el cable de alimentación al chasis del vehículo utilizando los sujetacables suministrados.
3. Al pasar el cable de alimentación por la lámina de metal, utilice la arandela pasacable existente, agregue una arandela pasacable o utilice silicona para proteger el cable de alimentación de los bordes filosos.
4. El diseño general del conector T puede ser distinto de la ilustración. La ilustración solo se debe utilizar para la instrucción del conductor de alimentación. La ilustración no está a escala.

