

# INSTALLATION MANUAL

## Level of Difficulty

Easy

Installation difficulty levels are based on time and effort involved and may vary depending on the installer level of expertise, condition of the vehicle and proper tools and equipment.

## Electrical Ratings

Signal circuits	3.0-amps per side
Tail / Running Circuits	6.0-amps total

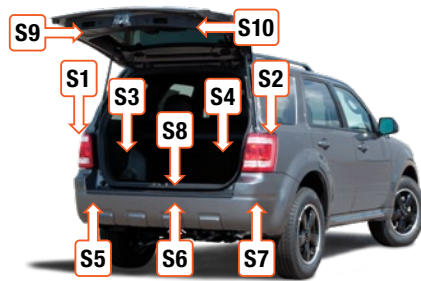
Check vehicle owner's manual or contact the vehicle manufacturer for more information.

## Wiring Location(s)

S3

## Wiring Location Guide\* for SUVs and Vans (S)

S1	Behind driver side taillight housing
S2	Behind passenger side taillight housing
S3	Behind driver side rear access panel
S4	Behind passenger side rear access panel
S5	Behind driver side rear bumper
S6	Behind center of rear bumper
S7	Behind passenger side rear bumper
S8	Under rear floor panel
S9	Behind driver side rear access panel
S10	Behind passenger side rear access panel



\* Representative vehicle shown

## Tools Required

Ratchet	Panel trim removal tool
Socket, 10mm	Cutting tool
Socket extension	--

## WARNING

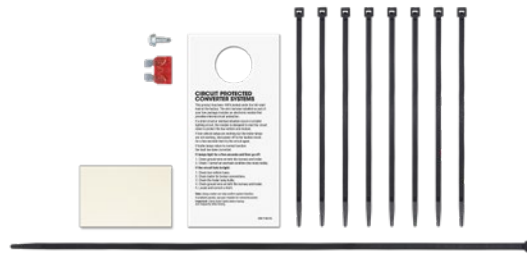
Do not exceed product rating or tow vehicle lamp load rating, whichever is lower.

The battery connection must be fuse-protected, 10-amp max. Exceeding the product rating can cause loss of warranty, overheating and potential fire.

## Product Photo



## Hardware Photo



## NOTICE

Before you begin installation, read all instructions thoroughly.

Proper tools will improve the quality of installation and reduce the time required.

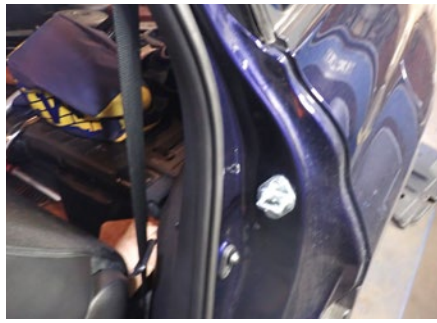
All steps must be followed to ensure the product will function properly. Once installed, test for proper function by using a test light or connecting a properly wired trailer.

## Maintenance

Periodic inspection of all wires and connections should be performed to ensure there is no visible damage or loose connections.

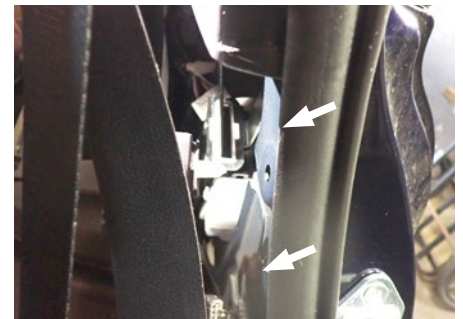
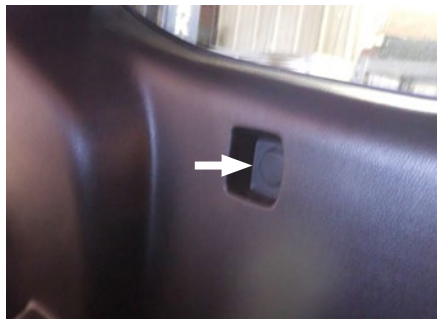
### Step 1

Open the driver-side rear door (second row seats). Fold the second-row rear seat forward to access the third-row cup holder. Use a panel trim tool to remove the third-row seating cup holder.



### Step 2

Just above the removed cup holder, remove the fastener trim cover using a small flathead screwdriver. Using a 10mm socket remove the fastener. Using a trim tool, pull back the side trim just below the second-row seat belt.



### Step 3

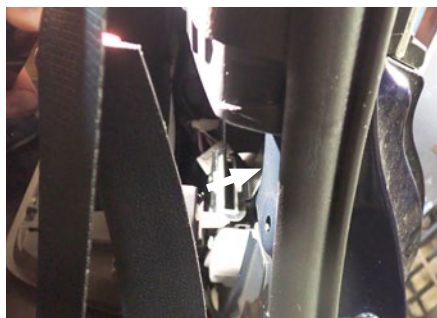
Separate the wall housing just below the glass. Locate the harness with a white connector just above the cup holder that was removed.



### Step 4

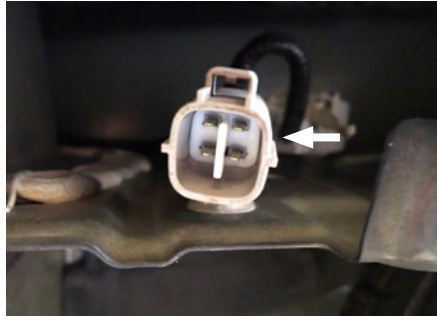
Install the fuse into the fuse holder and install the section of harness that mates to this harness (large white connector harness with black converter module.)

Use the provided double-sided tape to mount the converter below the arm rest. Locate the grounding point just behind the seat belt strap. Remove the existing 10mm bolt, secure the white ground wire to the bolt using the ring terminal and reinstall.



### Step 5

From the driver-side rear of the bumper, locate the jumper plug, remove the dust cover and install the harness with the 4-flat to the connector.



### Step 6

Reinstall all items removed during install. Route the 4-flat to the center of the vehicle next to the hitch and zip tie in place.