

## Adaptive Cruise Control Relocation Bracket

2021 FORD BRONCO

ABBR-01



### TOOLS REQUIRED

- 8mm & 13mm sockets
- #4 Allen Head
- Flat Head Screwdriver
- Pliers
- Push Pin Tool
- Snips/Scissors
- Electrical tape or Wire Heat Shield

### SKILL LEVEL

- Novice/Intermediate
  - 1 to 2 people
- Intermediate skill level required.  
Minor trimming required.

### TIME REQUIRED

- Approximately 2.5 Hours
- Time to install this should take about 2.5 hours

## WARNINGS/CAUTIONS BEFORE STARTING INSTALLATION

Before you install this kit – Read and understand all instructions, warnings, cautions, and notes contained in this installation instruction guide. Consult your vehicle owner’s manual for proper disconnection of electrical and lifting of vehicle if required for installation of this product.

This install may require some technical skills and knowledge of basic mechanical work. If you do not feel that you are capable of performing this install please take this product to a trained professional.

After reading this guide please contact us with any questions or concerns before installing product.  
Customer Service, 855-680-9595

*DV8 Offroad is not responsible for any bodily injury or harm to you or your vehicle as a result of an improper install.*

Proper installation of this kit required knowledge of the factory recommended procedures for removal and installation of original equipment components. We recommend that the factory shop manual and any special tools needed to service your vehicle be on hand during the installation. Installation of this kit without proper knowledge of the factory recommended procedures may affect the performance of these components and the safety of the vehicle

- Always wear eye protection when operating power tools

*Inspect all contents of this package to make sure product is not damaged and all installation hardware has been included. If parts are missing from kit, please be prepared to provide the following information*

1. Name of purchase location
2. Bar Code on side of box
3. Date above bar code
4. Date inside box cover



# INSTALLATION MANUAL

## STEP 1

### INSTALLATION OF ACC BRACKET

Begin by unpacking all items and inspecting for missing pieces or damage. If you have any concerns, please contact the company the product was purchased from.

<b>Hardware Included:</b>	(3) M6x15mm
(3) M8x30mm	(3) M6 Lock Nuts
(3) M8 Lock Nuts	(3) M6 Flat Washers
(3) M8 Flat Washers	(6) D Spacers



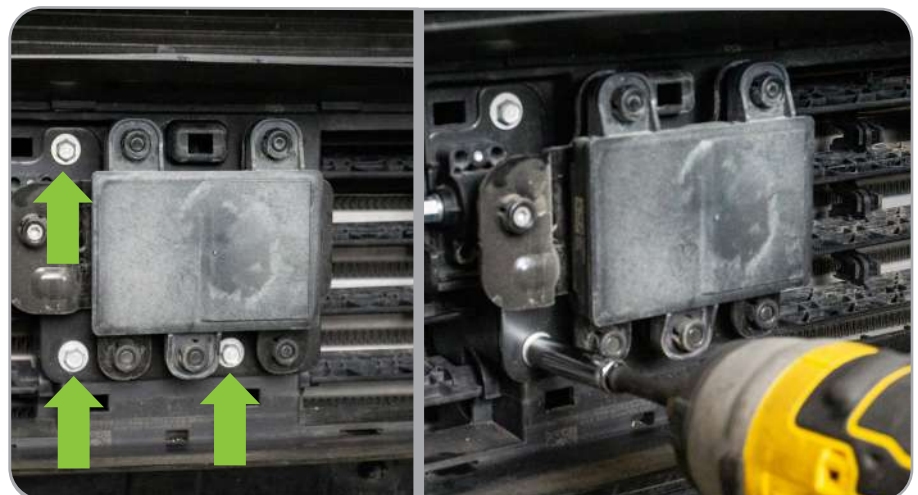
## STEP 2

With the front bumper removed, begin by removing the cover to the Adaptive Cruise Control (ACC) module. Grab the top of the cover and pull outward and slightly down, freeing the top two clips. Set off to the side since this will not be reused.



## STEP 3

Using an 8mm socket, remove the three bolts holding the module in place.



# INSTALLATION MANUAL

## STEP 4

Pull the module and bracket away from the vehicle slightly to expose the plug and squeeze down on the clip to release the module.



## STEP 5

Using a flat head screwdriver, wedge the tool in between the module and the bracket near each of the tabs and pull the module off the bracket. You will need to use firm pressure, but they should not be difficult to separate. Any excessive force will break the tabs. If the brackets are not moving after constant pressure, move the tool to the other side of the tab.



## STEP 6

Once the module is removed, using a pair of pliers, squeeze the tab bushing out from each hole.



# INSTALLATION MANUAL

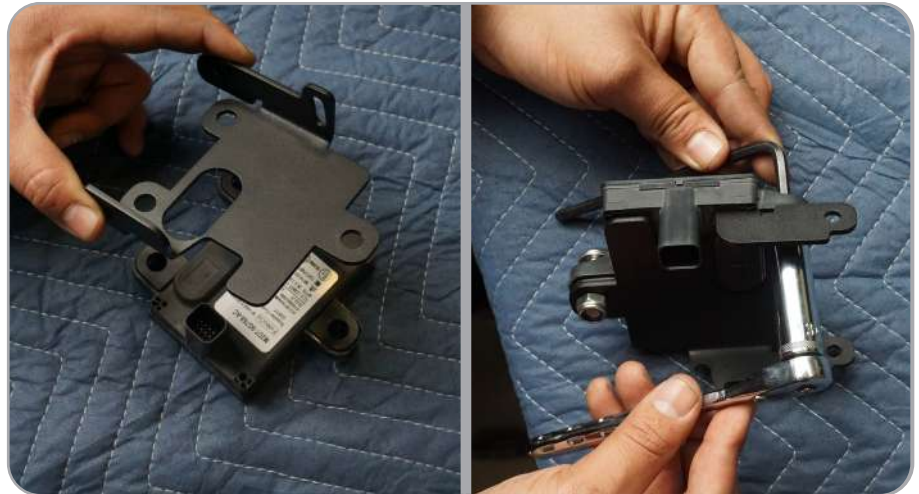
## STEP 7

To assemble the relocation bracket with the module, using the provided spacers, place them into the tabs of the module. Two spacers stacked on top of each other per tab (the spacers will only fit into one side of the tab, do not force them into the opposite side).



## STEP 8

Place the bottom half of your new ACC bracket on the module and secure using the M8 provided hardware. Using a #4 allen head and a 13mm socket, secure module to bracket.



## STEP 9

With the module secure, attach the top bracket to the bottom bracket using the remaining M6 hardware. This will use a 10mm socket and a #3 allen head, however, leave loose enough to allow adjustment.



# INSTALLATION MANUAL

## STEP 10

Remove the upper grille shroud by removing the (9) push pins.



## STEP 11

Remove the (4) 10mm bolts along the top holding the grille in place.



# INSTALLATION MANUAL

## STEP 12

Disconnect the two plugs on the top passenger side of the grille.



- a. Brown Plug for Camera: Push the clip on the top and pull the two parts away from each other.



- b. Black Washer Connector: Squeeze the two sides together and firmly pull apart.



# INSTALLATION MANUAL

## STEP 13

To remove the headlights, start by removing the 10mm bolt on top of the headlight and the push pin directly next to it. Repeat on other side.



## STEP 14

You will need to fully remove the front fenders by turning the clips on the underside of the fender down until they feel loose. Once loose, pull the fender away from the Bronco directly towards you, releasing the clips.



# INSTALLATION MANUAL

## STEP 15

Once both sides of fenders are removed, grab the bottom of the valance on the clip shown and pull away from the Bronco. This will release the side of the valance.



## STEP 16

Pull the center of the valance away from the Bronco to release the clips.





# INSTALLATION MANUAL

## STEP 17

Now you have access to the bolt on the bottom of the headlight. Using an 8mm socket, remove the bolt on both sides.



## STEP 18

To remove the grille, grab each side of the grille around the headlight and pull away from the Bronco. This will release the clips. Repeat on the opposite side and middle of the grille.



## STEP 19

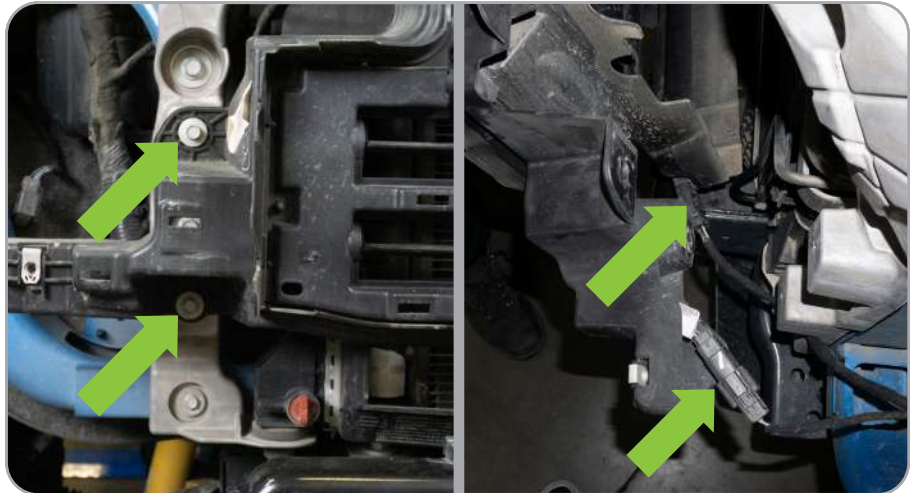
You can now remove the headlights from each side. Grabbing the light, pull away from the Bronco **straight** back. There is a pin that needs to be released on the backside of the turn signal. Pulling at an angle can cause this to break. Unplug headlights and set off to the side.



# INSTALLATION MANUAL

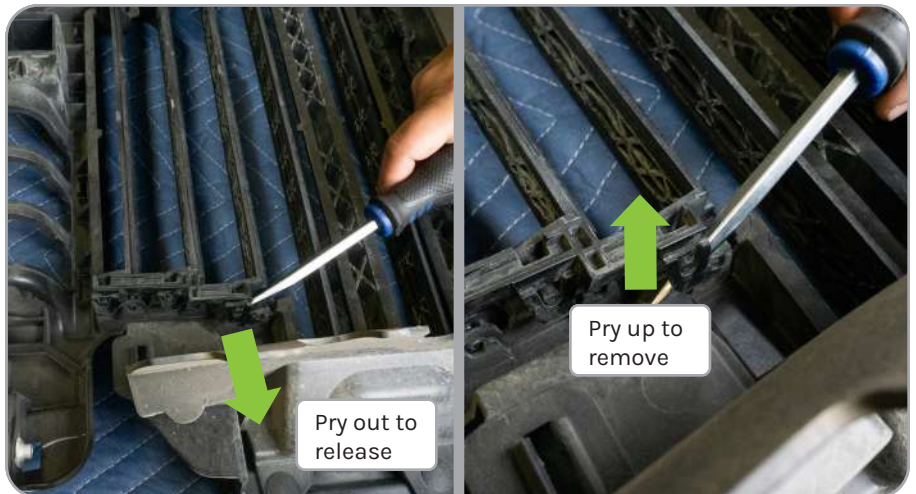
## STEP 20

Remove the radiator fin structure by removing the (2) 10mm bolts on each side. When you pull the structure away, unplug the (2) harness located on the lower driver side. One plug has an attached push pin mounted on the structure, remove this as well using your push pin tool.



## STEP 21

Lay the structure face down on a soft surface. On the top left side, we are going to remove the top two fins. These fins should not be attached to the motor (mounted in the center of the structure). Pry up on the linkage closest to the edge of the structure. You will release the top two fins from the bottom one.



## STEP 22

While the fins will not be reused, we do not want to break them if this was to ever be returned to stock. By applying pressure in the center, we were able to arc the fin enough to pull one side out while prying on the side with a flathead screwdriver.



# INSTALLATION MANUAL

## STEP 23

With the two fins removed, we can mark the area we will need to trim. We used masking tape, since this will show us where to trim the gasket on the leading edge as well.



## STEP 24

Un-clip the trim and using scissors or snips, trim the gasket and re-clip into place.

*Note: We went to the corner since we did not want to have too much gasket without a mounting point.*



## STEP 25

Using a grinder or other similar tool, trim the plastic.



# INSTALLATION MANUAL

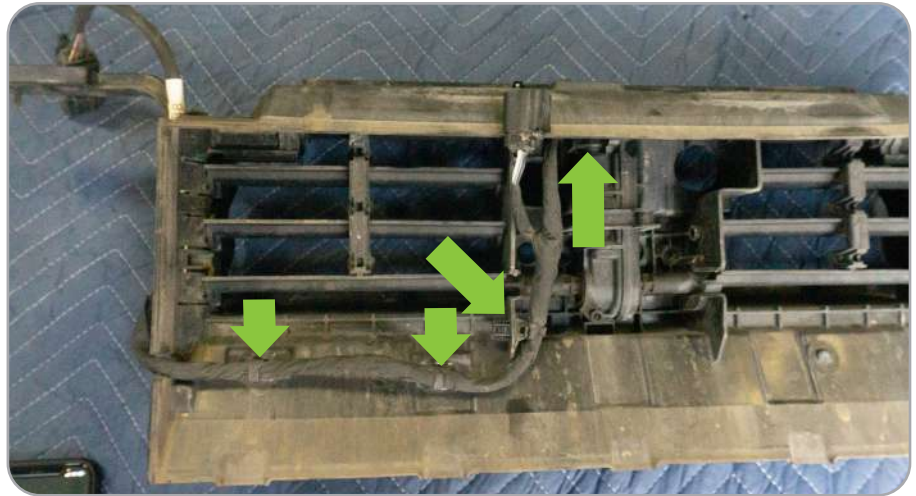
## STEP 26

Return to the Bronco and remove the lower fin structure by removing the (2) 8mm bolts on each side.



## STEP 27

After removing the lower structure, remove the wiring from the clips and unplug the motor in the center.



## STEP 28

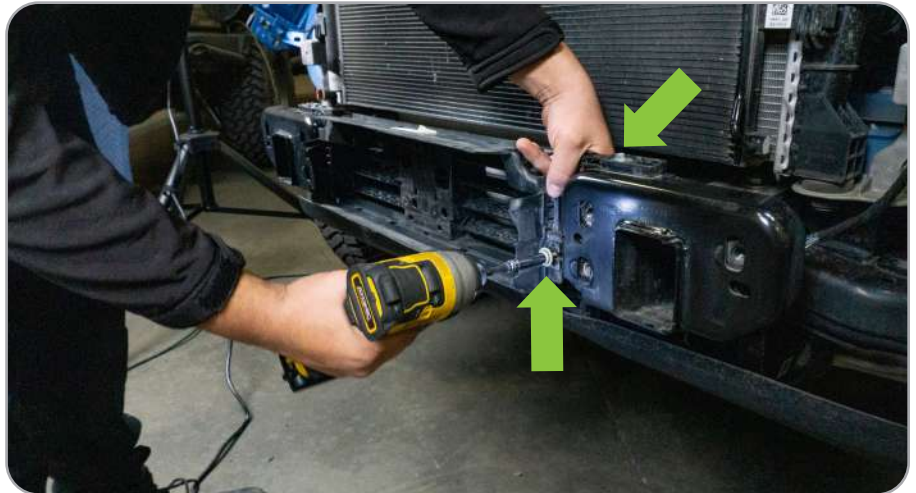
You will need to unwrap the wire cover around the ACC plug (all black plug) to gain some more length in wiring. Carefully unwrap the wire until you have about 10" in length. Cover exposed wires with electric tape or heat shield (not included).



# INSTALLATION MANUAL

## STEP 29

Reinstall the lower fin structure with the same 8mm bolts (no wiring).



## STEP 30

Plug the wire harness into lower fin motor from the top and loosely lay the wire towards the engine to check that you have enough wire for the module.



# INSTALLATION MANUAL

## STEP 31

Lay the upper structure on the vehicle mimicking the factory location.

*Note where the wiring lays. We are going to cut a single slit into the lower rubber gasket to prevent rubbing against the radiator.*



## STEP 32

Reinstall the upper structure using the factory 10mm hardware on both sides.



# INSTALLATION MANUAL

## STEP 33

Plug in the module and using factory hardware, install your new ACC bracket into the factory mounting holes for the grille structure.



## STEP 34

Now is the time to adjust the module. We started off with the module as even with the front of the Bronco and tightened the adjustment screws. This may have to be adjusted later after a trial street run depending on the vehicle.



## STEP 35

Plug in and reinstall each headlight using the factory M10 bolts, M8 bolts, and plastic push pins.

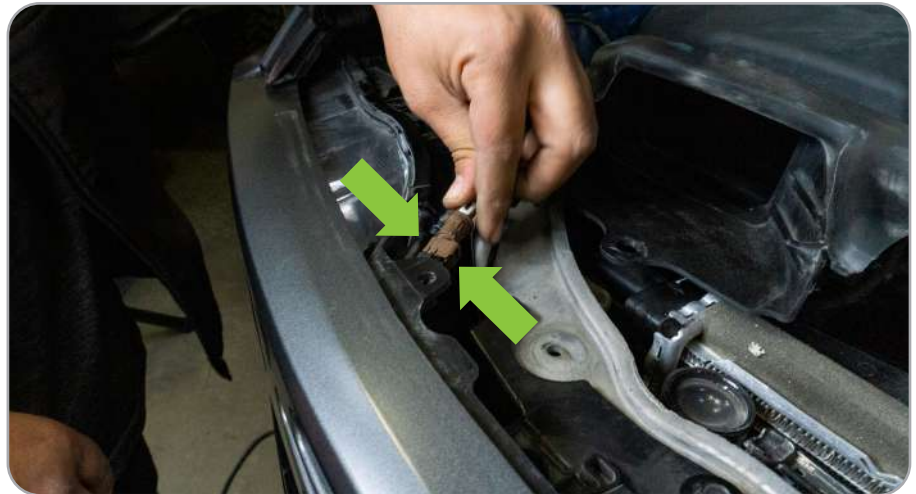
*NOTE: Push the pin behind the turn signal in firmly, to seat properly.*



# INSTALLATION MANUAL

## STEP 36

Reinstall the grille pushing the sides into place and then the center pins. Plug in both black and brown connectors for camera.



## STEP 37

Reinstall the bottom valance. Ensure each side is in place properly, then push the center clips in to secure into place.





# INSTALLATION MANUAL

## STEP 38

Reinstall the fenders by pressing firmly until you hear the clips snap into place. Turn factory clips to secure fender into place.



## STEP 39

Reinstall upper grille shroud using the (9) factory push pins.



## STEP 40

On the lower driver side of the grille, plug in both black connectors removed earlier and secure.



# INSTALLATION MANUAL

## STEP 41

Install new bumper or reinstall factory bumper if being reused.

**Test Drive:** During test drive, prepare for sudden changes in the cruise control while checking for correct positioning. If the bracket is not sensing the vehicle in front of you, angle down the sensor slightly.

*Do not rely on ACC until you have properly tested all features to ensure they are in correct working order.*

