

2010-2018 Dodge Ram 2500/3500 Front Bumper Install

(FBDR2-04)

1. Begin by removing the factory bumper and grill. Keep all hardware and parts since some will be reused throughout the install of the bumper.
2. Remove the factory tow hooks (if your model is equipped), but do not remove the main bumper brackets that attach directly to the frame. Your truck will look like this once everything is removed.



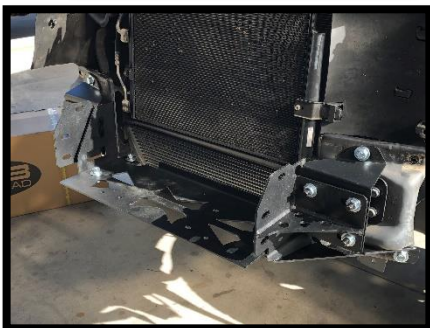
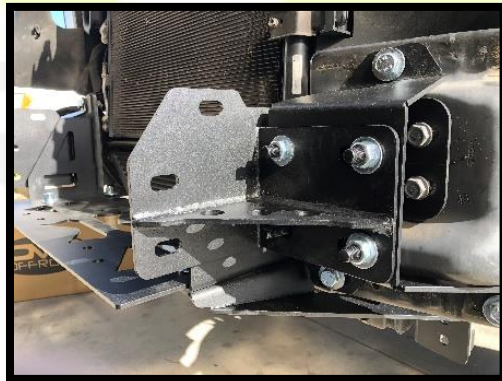
3. Begin by removing the bumper and all of the brackets. Find the two lower winch supports, winch plate, and winch plate mounting brackets. Using provided install hardware, join the three together shown in the below images. Ensure to keep bolts loose for adjustment.



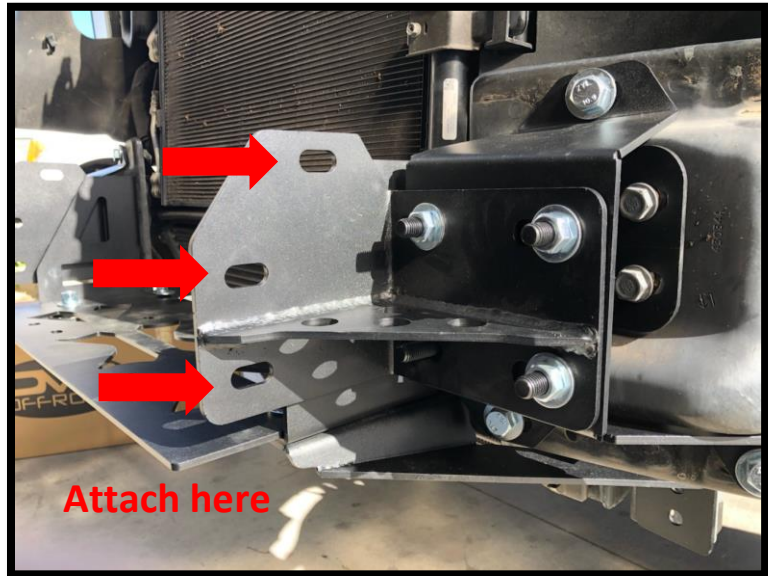
4. Install winch plate assembly onto truck using factory hardware to mount main winch plate bracket to factory bumper plates. Center winch plate assembly onto truck and tighten down. Leave lower support brackets unbolted for now.



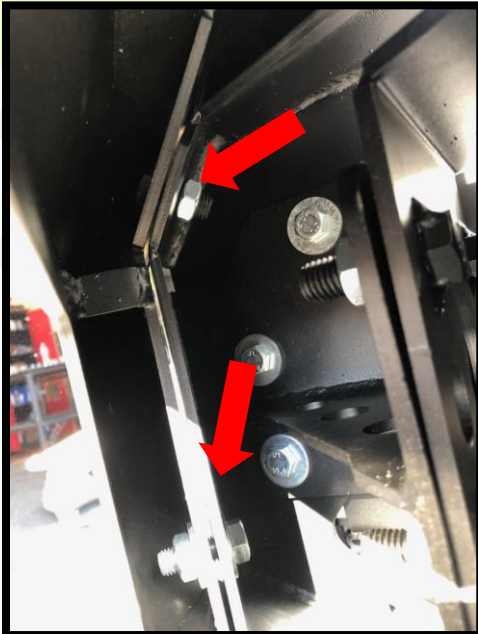
5. Locate and using provided hardware, install main bumper bracket on each side. These are held on by (3) three bolts on each side and go over the winch plate bracket. Using the studs on these brackets, you will then install the bumper center section bracket. Ensure that these are installed like the below images. (NOTE: If you are planning on installing a winch, now is the time to do so)



6. Using provided hardware, place center section onto brackets and loosely



7. Once center section is loosely attached, attach both wings onto center section using supplied hardware. Ensure to align them with center section and tighten them down. Do not attempt to line up the entire bumper with body line of truck at this point.



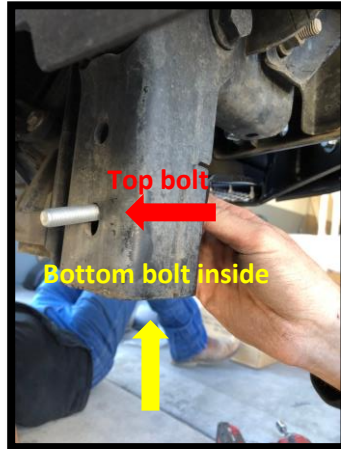
8. Once both wings are attached and fastened securely, locate the wing support brackets. Using provided hardware, attach to this to the inside of each bumper wing loosely and do not attach the opposite side to the truck at this moment.



9. At this point, making sure that all bolts (except the center section to the wings) are loose, align the bumper to match the body lines of the truck. You will need to pull out (forward) the bumper away from the truck to get the most adjustment. Secure bolts to prevent moving.
 - a. Insert light buckets on each wing and secure with provided allen bolts.



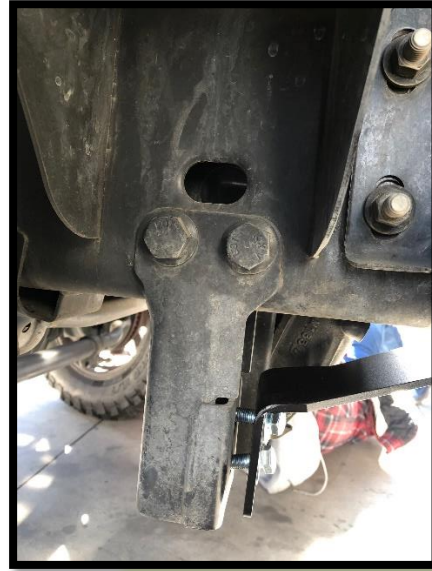
10. Using provided hardware, install the lower bolt for winch plate support bracket. The lower bolt attaches from the front to the inside of the mount on the truck. Secure the bolt on both sides.



11. Loosely attach skid plate to bumper using supplied hardware. Using the 4" long bolts provided, attach skid plate to backside of frame horn that the winch plate support bracket bolted to. The bolt will be at an angle. You can tighten down at an angle without any damage or integrity loss, or you can open up the hole to level out the bolt. Secure all skid plate bolts.



12. Remove front bolt and install wing support bracket reusing factory bolt. Once secured, tighten down ALL hardware for bumper. Reinstall factory grill.



If you have any questions or concerns, please email us at info@dv8offroad.com or give us a call at (951) 680-9595