



INSTALLATION MANUAL
FORD BRONCO REAR FENDERS
PRODUCT NUMBER: FB2001
APPLICATION: 2021 FORD BRONCO



IMPORTANT SAFETY GUIDE | Your safety and the safety of others is very important.

In order to help you make informed decisions about safety, we have provided the following warnings, safety precautions, installation instructions, and other important information to alert you to potential hazards that could hurt you or others.

Please do a job safety analysis before each task to identify potential hazards for your situation and remove/protect against them. Use own good judgment and take your time.

Check packaged materials immediately upon arrival to ensure that all listed parts are included and undamaged.

Read and understand all warnings, safety precautions, and instructions before installing this product.

SENSORS FIELD OF VIEW MAY BE ALTERED WITH USE OF THE REPLACEMENT BUMPER.

WARNINGS

- Failure to observe the following warnings and instructions provided in this manual could lead to severe injury and/or death.
- For professional installation only. Careless installation and/or operation can result in serious injury, death, and/or equipment damage. All liability for installation and use rests with the user or consumer.
- Fab Fours, Inc. only approves installing this product according to these written instructions with the hardware provided. Failure to install according to these instructions will invalidate the warranty. This includes, but is not limited to, using alternative installation methods, hardware, or materials.
- This product is for off road use only.

SAFETY PRECAUTIONS

- Always remove jewelry and wear eye protection.
- Always use extreme caution when jacking up a vehicle for work. Set emergency brake and use tire blocks. Locate and use the vehicle manufacturers designated lifting points. Use jack stands.
- Always use appropriate and adequate care in lifting components into place.
- Always ensure components will remain secure during installation and operation.
- Always wear safety glasses when installing this kit. A drilling operation will cause flying metal chips. Flying chips can cause serious eye injury.
- Always use extreme caution when drilling a vehicle. Always disconnect power before welding. Thoroughly inspect the area to be drilled (on both sides of material when possible) prior to drilling, and relocate any objects that may be damaged.
- Always use extreme caution when welding a vehicle. Thoroughly inspect the area to be welded (on both sides of material when possible) prior to welding, and relocate any objects that may be a fire hazard. When welding in a cab, make sure the interior surfaces are covered (e.g., welding blanket) and a fire extinguisher is at hand.
- Always use extreme caution when cutting and trimming during fitting.
- Always tighten all nuts and bolts securely per installation instructions.
- Always route electrical cables carefully. Avoid moving parts, components that become hot, and rough or sharp edges.
- Always insulate and protect all exposed wiring and electrical terminals.
- Perform regular inspections and maintenance on mounts and hardware.

TABLE OF CONTENTS

2	SAFETY / DISCLAIMER
3	TABLE OF CONTENTS
4	A MESSAGE FROM THE OWNER
5	GETTING STARTED
6	PROVIDED MATERIAL
8	DISASSEMBLY
12	PREINSTALLATION
16	INSTALLATION
20	CONTACT

A MESSAGE FROM THE OWNER



Fab Fours' was born out of a passion for customizing vehicles and a love of the outdoors. Our engineering team uses the latest 3D design software to turn new product ideas into reality. In our factory, designs come to life with the combination of cutting edge technology for metal cutting and forming and an American workforce that puts its' heart and pride into every product.

From design and manufacturing, to quality and delivery, Fab Fours' mission is to be the market leader for steel truck and jeep accessories. We make sure a quality product is delivered on time, more than expected, better than expected to our customers.

Enjoy your new Fab Fours product. Welcome to the family!

Greg Higgs

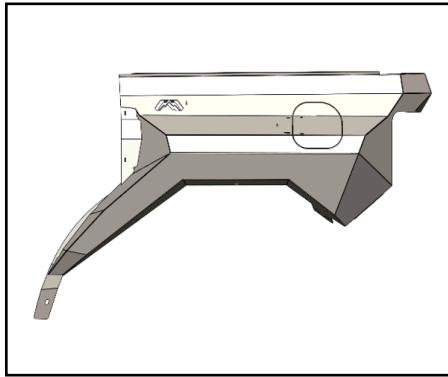
FOUNDER, FAB FOURS

GETTING STARTED

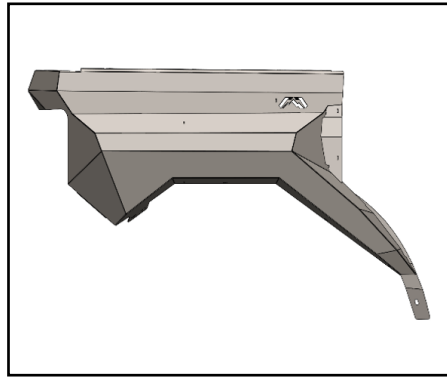
Before you begin the installation process of your new Fab Fours product, we suggest laying out all materials and parts on a pad or protective surface.

Failure to fully account for all components before beginning installation may leave vehicle immobile until part is acquired. Refer to the next pages as an inventory check.

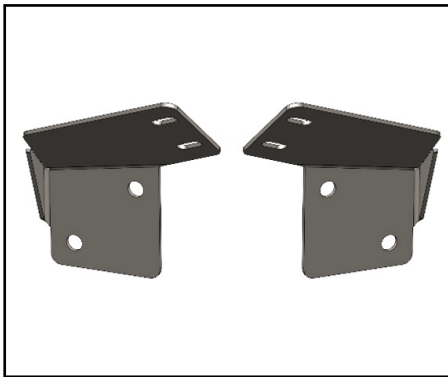
PROVIDED MATERIALS



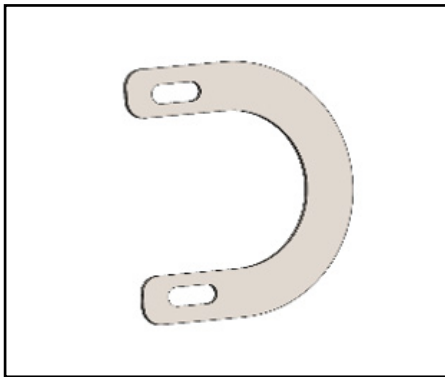
22794 - DS REAR FENDER



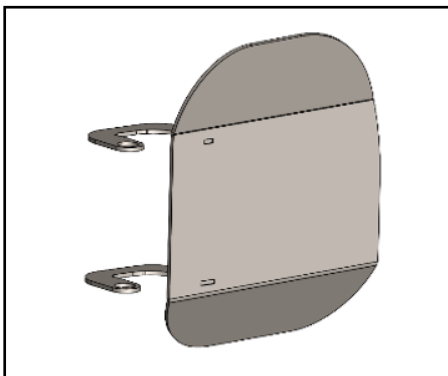
22795 - PS REAR FENDER



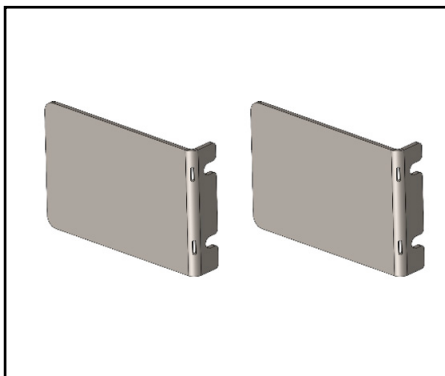
22796, 22797 - DS, PS REAR MOUNT BRACKET



22798 - FUEL TUBE MOUNT BRACKET



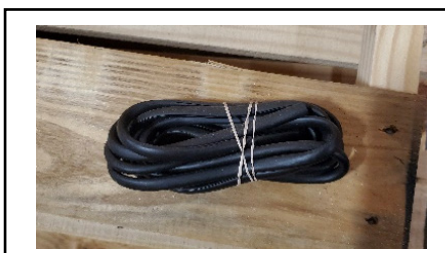
22814 - FUEL DOOR ASSEMBLY



22836 - LOGO BACKING PLATE (QTY: 2)



61803 - MAGNETIC LATCHES (QTY: 2)



61723 - RUBBER EDGE SEAL

TOOLS REQUIRED

- PLASTIC PUSH RIVET REMOVAL TOOL
- NEEDLE NOSE PLIERS
- PHILLIP'S HEAD SCREWDRIVER
- 7MM SOCKET WRENCH
- 10MM SOCKET WRENCH
- 5/16" SOCKET WRENCH
- 3/8" COMBINATION WRENCH
- 9/16" SOCKET WRENCH
- 7/32" ALLEN WRENCH
- 7/16" SOCKET WRENCH
- 7/16" COMBINATION WRENCH
- ELECTRIC DRILL
- STEP BIT OR DREMEL TOOL

ASSISTANCE

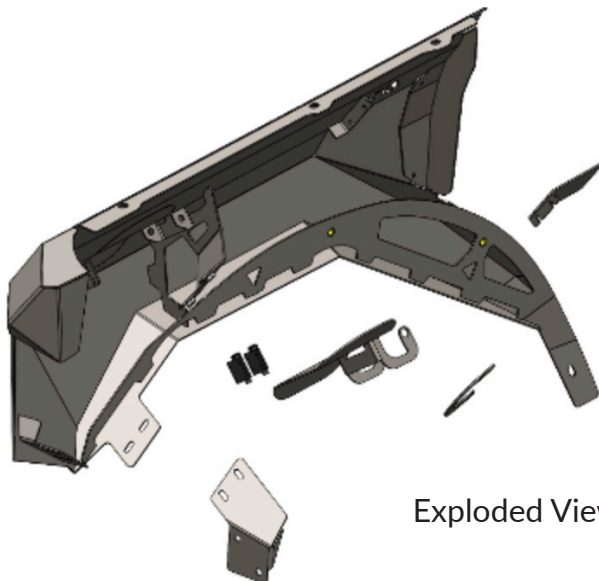
We recommend two people perform the installation as items are heavy and may need to be held in place while installing.

ORGANIZATION

Disassemble the vehicle where you can catalog and store everything. We suggest labeling and bagging all the OEM bolts when removing from the vehicle. Failure to keep track of parts could lead to an inability to properly reinstall components.

HARDWARE KIT | FB2001-IM

FAB FOURS IDENTIFICATION	COMPONENT DESCRIPTION	QTY
50354-HW	1/4" Bolt Yellow Zinc Steel	4
50354-HW	1/4" Hex Nut Zinc Steel	4
50354-HW	1/4" Flat Washer Zinc Steel	8
50354-HW	1/4" Lock Washer Zinc Steel	4
50354-HW	#10 Bolt Yellow Zinc Steel	4
50354-HW	#10 Nyloc Hex Nut Zinc Steel	4
50354-HW	#10 Flat Washer Yellow Zinc Steel	8
50354-HW	3/8"-16, Bolt, Plain, SS	2
50354-HW	3/8"-16, Nut, Plain, SS	2
50354-HW	3/8", Flat Washer, Plain, SS	4
50354-HW	3/8", Lock Washer, Plain, SS	2
50354-HW	3/8"-16, Bolt , Zinc, Steel	10
50354-HW	3/8", Flat Washer, Zinc, Steel	12
50354-HW	3/8", Lock Washer, Zinc, Steel	8
50354-HW	3/8"-16, Nyloc , Zinc, Steel	2
50354-HW	BRASS Bushing	2
50354-HW	BRASS Thrust Washer	2
50354-HW	3/8"-16, Rivet Nut, Zinc, Steel	2
50354-HW	17/32" Drill Bit	1
50354-HW	3/8" Rivet Nut Install Tool	1



Exploded View: Driver's Side

DISASSEMBLY

1. Remove vehicle top. Consult OEM instructions for details on proper removal.
2. Remove factory fender flares by turning plastic levers and pulling off flares. (Figure 1)



Figure 1

3. Using pop rivet removal tool and Phillip's head screwdriver, remove plastic push rivets from inner fender. Remove two (2) plastic wing nuts and use 7mm socket to remove remaining sheet metal screws from inner fender.
4. Gently pull-on rear edge of valence to release plastic clips. (Figure 2)



Figure 2

5. Gently pull-on front of valence to release plastic clips. (Figure 3) Set plastic valence aside for later use.



Figure 3

6. Using a 10mm socket, remove two (2) bolts into vehicle body, and one (1) bolt in plastic block. (Figure 4)

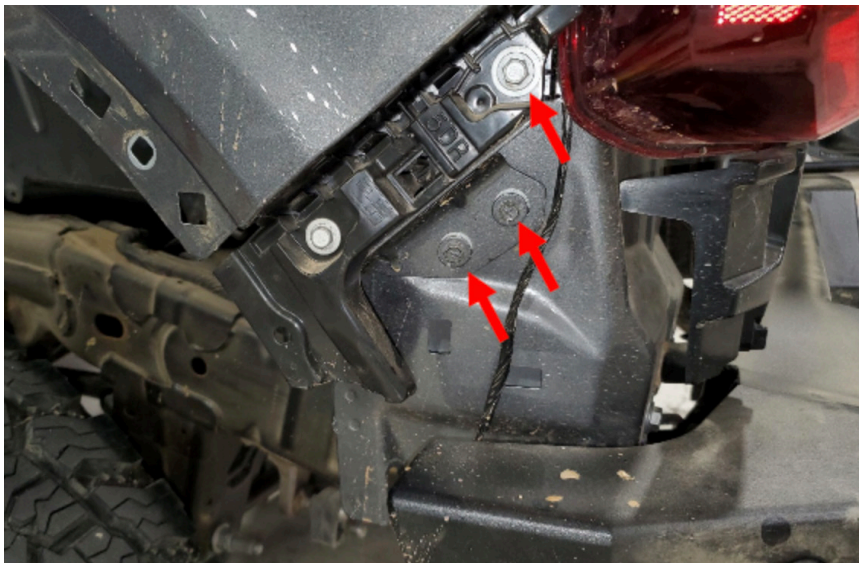


Figure 4

-
7. Open rear door and use 10mm socket to remove one (1) bolt inside door. (Figure 5)



Figure 5

8. Use pop rivet pry tool to remove 4 (four) pop rivets, and socket to remove three (3) bolts from plastic cover inside tailgate door. (Figure 6)



Figure 6

9. Use 10mm socket to remove one (1) bolt from behind plastic cover at rear of fender. (Figure 7)



Figure 7

10. Use 10mm socket to remove remaining three (3) bolts from top of fender. Save these bolts for later use (Figure 8)



Figure 8

11. Gently remove fender from vehicle. On driver's side fender, rubber gasket will need to be pulled over fuel filler hose.

PREINSTALLATION

12. Using two (2) ¼" bolts, nuts, flat washers (4) and lock washers (50354-HW) attach logo backing plate (22836) to mounting bracket on inside of fender. (Figure 9)

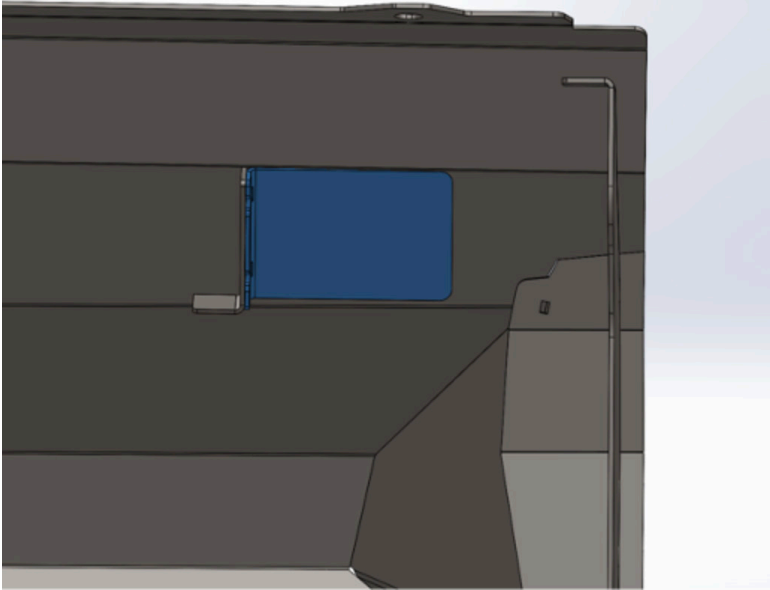


Figure 9

13. Enlarge the two (2) inner rectangular slots in plastic valence tabs using a step bit, or Dremel tool, just large enough to fit #10 bolts (50354-HW). (Figure 10)



Figure 10

14. Attach valence to appropriate fender (22794 or 22795) using two (2) #10 hex bolts, four (4) #10 flat washers, and two (2) nyloc hex nuts (50354-HW). Use 5/16" socket and 3/8" combination wrench to tighten. (Figure 11 &12)



Figure 11



Figure 12

*****Note: Steps 15-18 apply to driver's side fender only**

15. Place brass bushings (50354-HW) into fuel door hinge (22814). Bushings should be inserted from outside of hinge arms. (Figure 13)

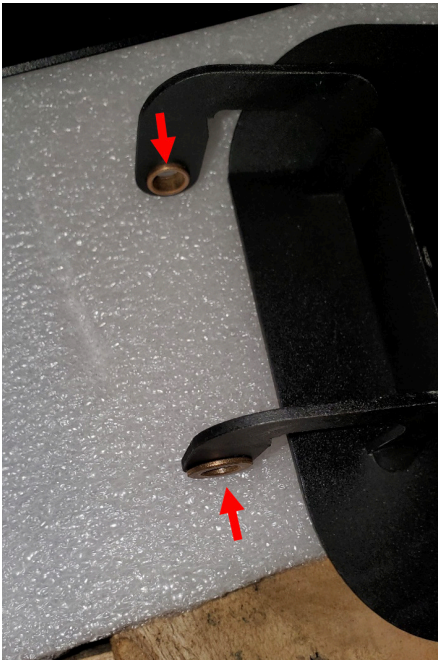


Figure 13

16. Install fuel door onto fender. Brass thrust washers should be inserted between the two hinge arms. After thrust washers are in place, Insert two (2) 3/8" hex bolts, four (4) flat washers, and two (2) nyloc nuts into top and bottom of hinge. (Figure 14) Bolts can be tightened to desired tightness to achieve optimal resistance to door swing.

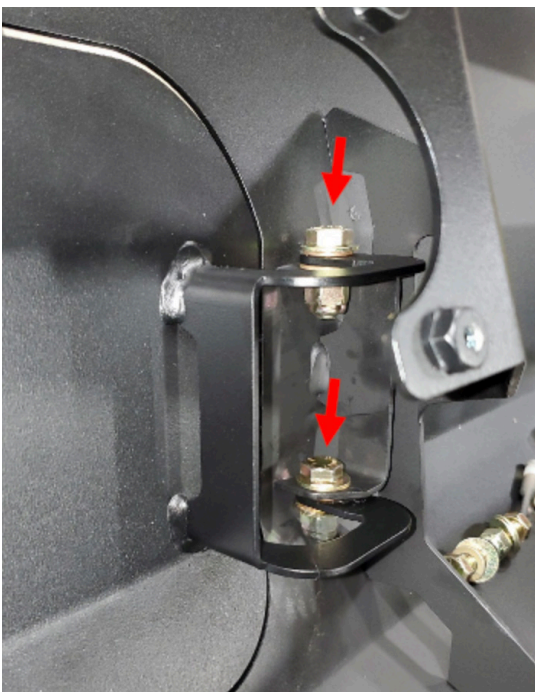


Figure 14

-
17. Using provided hardware (61803) mount two (2) magnetic latches (61803) to mounting bracket on inside of fender. Adjust latches so that door is flush with fender when latches are in closed position. (Figure 15)

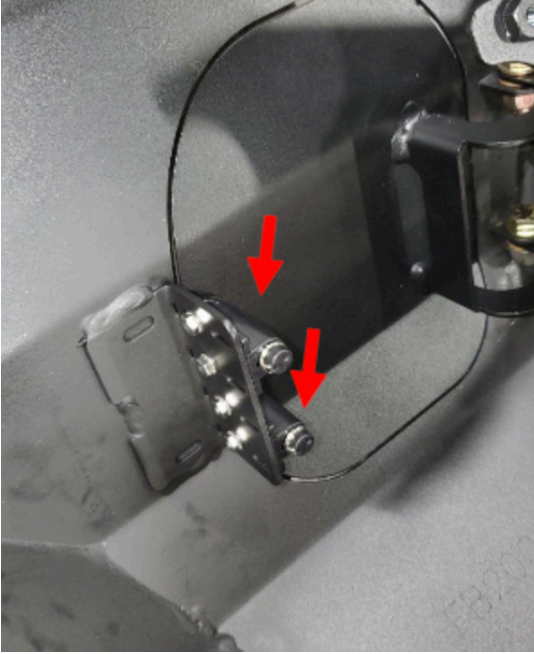


Figure 15

18. Cut two (2) 2.5" lengths of rubber edge seal (61723).

19. Add rubber edge seal pieces cut in step 18 to fuel tube mount bracket (22798) and fuel tube mount inside fender (22794). (Figure 16)



Figure 16

INSTALLATION

20. Bend or trim rear most mounting hole tab from wheel well. (Figure 17) Note: Passenger side may need additional trimming or bending to fully avoid interference in this location.



Figure 17

21. With assistance, set new fender (22794 & 22795) on vehicle and line up top mounting holes on top of fender.
22. Insert OEM bolts into top three (3) holes. Do not tighten at this time.
23. Properly align pin and two (2) clip pins in rear valence with holes on vehicle. Press clips into holes until valence securely clips into place.
24. Insert two (2) 3/8" hex bolts, flat washers, and lock washers, through holes in body panel and into fender weld nuts in wheel well. (Figure 18) Do not tighten at this time.



Figure 18

25. Insert one (1) 3/8" cap head bolt, two (2) flat washers, one (1) lock washer, and one (1) hex bolt, into front lower hole on fender flare and through body panel. (Figure 19)



Figure 19

26. Make any adjustments to fender with relation to rear doors, and then tighten all hardware.

27. Driver's side fender only: Ensure that fuel filler hose bracket inside fender fits around fuel filler hose properly. Install fuel filler hose bracket (22798) by placing bracket around filler hose and firmly squeezing the 2 brackets around the hose while tightening the two (2) M6 bolts, with flat washers and lock washers (50354-HW). (Figure 20)



Figure 20

28. Loosely attach rear mounting bracket 22796 (DS) & 22797 (PS) to fender using ¼" hardware. Bracket should sit flat on body panel inside wheel well. (Figure 21) Mark hole location on inside of body panel and remove bracket.



Figure 21

29. Using 17/32" drill bit (50354-HW), drill two (2) holes in marked locations.

30. Using 3/8" rivet nut insert tool (50354-HW), firmly seat rivet nuts into holes. (Figure 22)



Figure 22

31. Install bracket using two (2) 3/8" bolts, flat washers, and lock washers (50534-HW) and rivet nuts installed in step 30.

32. Re-install 1/4" hardware to attach fender to bracket and tighten. (Figure 23)



Figure 23

33. Plastic inner fender can be trimmed around mounting bracket (22796 & 22797) and reinstalled.

34. Repeat steps 19-32 on opposite side fender.

INSTALLATION COMPLETE

CONTACT INFORMATION

**FAB FOURS INC.
2213 INDUSTRIAL PARK ROAD
LANCASTER, SC 29720**

PHONE: (866) 385-1905

FAX: 970-385-1914

EMAIL: SUPPORT@FABFOURS.COM

FABFOURS.COM



**“IF YOU’RE LOOKING FOR MORE OF THE SAME,
THEN YOU’VE COME TO THE WRONG PLACE.”**

- GREG HIGGS

