

DIRECT-REPLACEMENT
INSTALLATION GUIDE



JEEP JK (2011-2018)

883-26-109 - Kit: 11-18 Jeep JK, Front, Internal Bypass, 2.5 FRS, R/R, 2.5-4" Lift, DSC

883-26-110 - Kit: 11-18 Jeep JK, Rear, Internal Bypass, 2.5 FRS, R/R, 2.5-4" Lift, DSC



JEEP JK FACTORY RACE SERIES

JEEP JK (2011-2018)

883-26-109 - Front, Internal Bypass, 2.5 Factory Race Series, Recirculating Reservoir, 2.5-4" Lift, Dual Speed Compression

883-26-110 - Rear, Internal Bypass, 2.5 Factory Race Series, Recirculating Reservoir, 2.5-4" Lift, Dual Speed Compression

Thank you for choosing FOX direct-replacement shocks for your vehicle. FOX products are designed, tested, and manufactured by the finest professionals in the industry.

FOX recommends that you become completely familiar with the handling characteristics of your modified vehicle before operating it under rigorous conditions, helping to avoid potential rollover situations and other loss of control events. FOX further recommends that you use appropriate protective equipment at all times when operating your vehicle.

To achieve the best performance and product longevity, periodic service and maintenance is required. Please refer to the Service and Upgrades section for more information.

Contents

SAFETY WARNINGS2

INSTALLATION GUIDELINES2

INSTALLATION FRONT..... 3-7

INSTALLATION REAR.....8-10

FACTORY SETTINGS..... 11

WARRANTY 12

SHOCKS NEED LOVE TOO..... 13

Supplied Parts

SHOCK ASSEMBLY				
FOX PN	DESCRIPTION		QTY	NOTES
983-26-109-L	FRONT, LEFT SHOCK		1	Front Shocks
983-26-109-R	FRONT, RIGHT SHOCK		1	
983-26-110-L	REAR, LEFT SHOCK		1	Rear Shocks
983-26-110-R	REAR, RIGHT SHOCK		1	
FRONT RESERVOIR BRACKET ASSEMBLY				
FOX PN	DESCRIPTION	*HARDWARE REF.	QTY	NOTES
026-01-078	DRIVER SIDE, RESERVOIR MOUNT	A	1	Brackets mount the front reservoirs to the vehicle.
026-01-079	PASSENGER SIDE, RESERVOIR MOUNT	B	1	
018-04-012-A	SCREW: 3/8"-12 X 3/4" HEX HEAD, SELF-TAPPING	C	6	Each bracket uses three self-tapping screws.
018-01-066	SCREW: 8-32, 3/4"	D1	4	Each bracket uses two clamps and a clamp uses two screws.
026-01-167-1	2.5 RESERVOIR CLAMP, TOP	D2	2	
026-01-167-2	2.5 RESERVOIR CLAMP, BOTTOM	D3	2	
FRONT RELOCATION BRACKET ASSEMBLY				
FOX PN	DESCRIPTION	*HARDWARE REF.	QTY	NOTES
026-01-218-1	FRONT LOWER EYELET RELOCATION BRACKET, LEFT	E	1	Brackets relocate the lower eyelet of the front shocks.
026-01-218-2	FRONT LOWER EYELET RELOCATION BRACKET, RIGHT	F	1	
018-04-059	BOLT: 3/8"-24 X 1" HEX HEAD	G1	2	Each short hex bolt uses two washers and one nut.
018-00-081	NUT: 3/8"-24 X 0.328"	G2	2	
018-05-072	WASHER: 3/8"	G3	4	
018-04-060	BOLT: 3/8"-24 X 3/4" FLAT HEAD	H1	4	Each short tapered bolt uses one washer and one nut.
018-00-081	NUT: 3/8"-24 X 0.328"	H2	2	
018-05-072	WASHER: 3/8"	H3	2	
018-04-058	BOLT: 1/2"-13 X 4.50" HEX HEAD	J1	2	The 1/2" long bolt uses two washers, one nut and one spacer.
018-00-080	NUT: 1/2"-13 X 0.438"	J2	2	
018-05-071	WASHER: 1/2"	J3	4	
233-00-371	SPACER: 1.5"	J4	2	

*Hardware Reference is used throughout the installation manual to provide notation of the supplied kit.

SAFETY INSTRUCTIONS

WARNING

- FOX direct-replacement shocks are designed to fit and allow proper clearance with the stock suspension. If aftermarket suspension components are installed it is the customer's responsibility to ensure that interference between the FOX shocks and other vehicle components does not occur at any point in the shock stroke.
- FOX direct-replacement shocks should always be installed as a set for maximum performance.
- Proper installation and service procedures are essential for the safe and reliable operation of the suspension components, requiring the experience and tools specially designed for this purpose. Installation and maintenance procedures for this product must be performed by a qualified service technician, to avoid potentially unsafe vehicle handling characteristics, which may result in SERIOUS INJURY or DEATH.
- Modifying your vehicle's suspension will change the handling characteristics of your vehicle. Under certain conditions, your modified vehicle may be more susceptible to loss of control or rollover, which can result in SERIOUS INJURY or DEATH. Thoroughly familiarize yourself with the modified vehicle handling characteristics before any rigorous vehicle operation. Wear protective body gear and a helmet when appropriate. Installation of vehicle roll bars or cage is highly recommended.
- FOX direct-replacement shocks are gas-charged and are highly pressurized. Placing shocks in a vise or clamp, applying heat, or attempting to open or service the shock without the proper tools and training can result in SERIOUS INJURY or DEATH. Do not attempt to modify, puncture or incinerate a FOX direct-replacement shock absorber.
- Any attempt to misuse, misapply, modify, or tamper with any FOX product voids any warranty and may result in SERIOUS INJURY or DEATH.

INSTALLATION GUIDELINES

WARNING

- Always use a chassis lift for the installation of shocks, and make certain that the raised vehicle is securely attached to the lift to prevent the vehicle from slipping, falling, or moving during the installation process.
- DO NOT install any FOX product without the necessary special tools, expertise and chassis lift or you will subject yourself to the risk of SERIOUS INJURY or DEATH. If you elect to not use a chassis lift (which may result in SERIOUS INJURY or DEATH), ensure that the vehicle is on level ground, that all tires on the ground during installation are blocked to prevent vehicle movement, that at least two tires are on the ground at all times, and that adequately secured jack stands are used to support the vehicle. NEVER get under the vehicle until you have checked to ensure that the vehicle will be stable during installation.
- FOX direct-replacement shocks are designed to fit your vehicle's shock mounts with no modification with the exception of reservoir placement on specific models and applications.
- If a preload adjustment is necessary for your application DO NOT adjust preload with the coil-over on the vehicle. Remove the coil-over from the vehicle and use a spring compressor to remove the lower spring hardware and spring. Once the spring is removed, you can adjust the preload ring. DO NOT Exceed more than 1/2" of additional preload. If more than 1/2" of preload is required, you will need to go up in spring rate or get a longer spring that fits the application.

SHOCK INSTALLATION INSTRUCTIONS - FRONT

NOTICE: Medium-strength thread-lock (blue Loctite) is recommended on all bolts.

1. Please read the installation guidelines for instructions on how to properly lift and secure the vehicle.

READ INSTALLATION GUIDELINES ON PAGE 2.

2. Remove front wheels from vehicle.
3. Remove front stock shocks. Remove the lower shock bolts first, followed by the upper shock bolts.
4. Install the supplied reservoir brackets, Group A and B, to the vehicle frame so that brackets angle up toward the rear of the vehicle. The FOX reservoir brackets have cutouts to center around the tube coming from the vehicle frame. Mark the center hole and drill a 10/32" pilot hole then secure the reservoir bracket to the frame with one of the supplied 3/8" self-tapping Group C screws. Drill the remaining two pilot holes and install two Group C screws (Figure 1).



Figure 1: Install the supplied reservoir brackets, Group A and Group B.

- Use a 7/16" drill bit to open up two holes on the bottom of the factory shock mount. These holes correspond to the two holes at the bottom of the supplied lower relocation brackets, Group E and F (Figure 2).



Figure 2: Open up two holes on the bottom of the factory shock mount.

- Use a 3/8" bit to drill a hole on the coil spring perch (Figure 3).

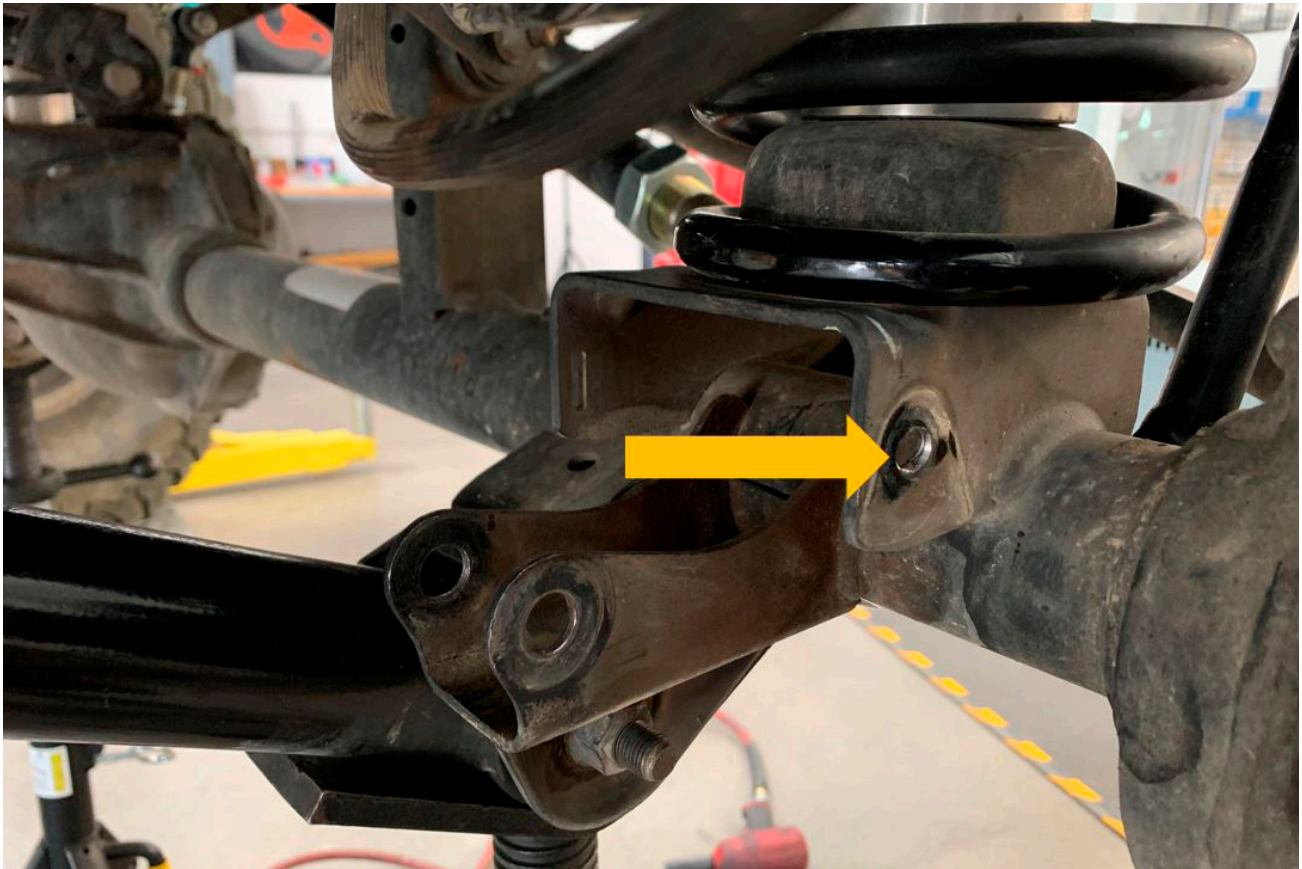


Figure 3: Drill a hole on the coil perch.

7. Use Group G and H hardware, hand tighten the Group E and F lower eyelet relocation brackets into place. Next, torque to 35 ft-lbs. (Figure 4).

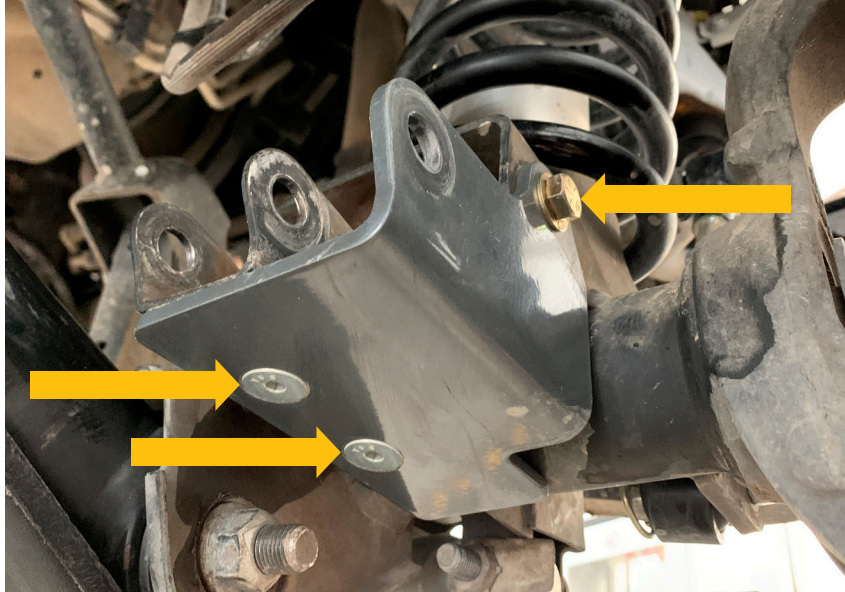


Figure 4: Torque to 35 ft-lbs.

8. Connect the FOX front shock to the upper vehicle mount with a stem bushing and washer on the bottom and top. Hand tighten the nut to allow the shock to be maneuvered into position (Figure 5).



Figure 5: Hand tighten all hardware first.

9. Connect the FOX front shock to the Group E or F bracket using the Group J hardware. Install the Group J1 spacer in the stock mount location.
10. Torque the upper and lower front shock hardware to factory specifications (Figure 6).



Figure 6: Torque shock hardware to factory specifications.

11. Use the two Group D clamps to mount the shock reservoir to Group A and B brackets. Utilize the slots in the bracket to locate clamps. Do not feed the clamps through the slots in the brackets (Figure 7 & 8).



Figure 7: The Group D clamps secure reservoir to Group A and B brackets.



Figure 8: This image is for informational purposes only to demonstrate how the reservoir brackets should interface with the bracket. **Mount Group A and B brackets to the vehicle before you install the reservoir.**

12. Check that the suspension has proper clearance by steering completely in both directions.
13. Reinstall both front wheels and torque to factory specifications.
14. For maximum performance, FOX recommends your new Internal Bypass Shocks show between 4.5" to 6.0" of the shaft at ride height.

SHOCK INSTALLATION INSTRUCTIONS - REAR

NOTICE: Medium-strength thread-lock (blue Loctite) is recommended on all bolts.

1. Please read the installation guidelines for instructions on how to properly lift and secure the vehicle.

READ INSTALLATION GUIDELINES ON PAGE 2.

2. Remove rear wheels from vehicle.
3. Identify which FOX shock goes on the correct side (Figure 9).



Figure 9: Left side and right side shocks.

4. Remove rear stock shocks.
5. Orient the FOX shock with the reservoir pointing toward the rear of the vehicle (Figure 10 & 11).



Figure 10: Right side orientation.



Figure 11: Right side orientation.

6. Reuse the factory bolts and hand tighten the upper FOX shock (Figure 12).



Figure 12: Reuse factory hardware.

7. Reuse the factory bolt and nut. Install the lower FOX shock mount (Figure 13).

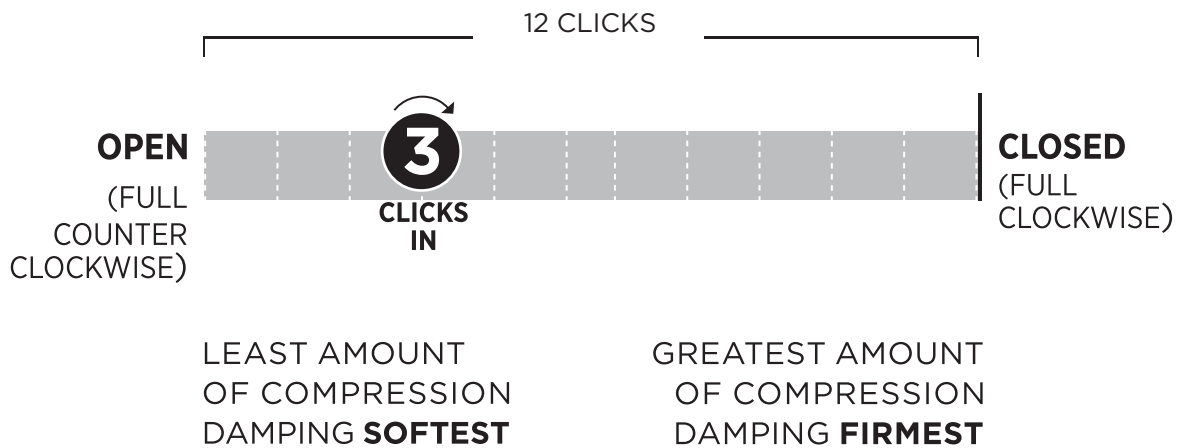


Figure 13: Reuse factory hardware.

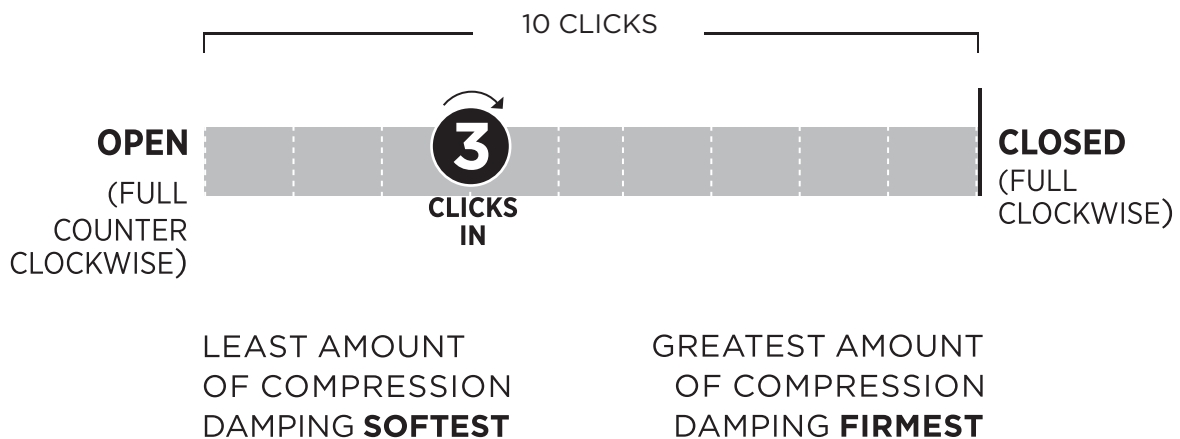
8. Torque to factory specifications.
9. Check that the suspension has proper clearance.
10. Reinstall both rear wheels and torque to factory specifications.
11. For maximum performance, FOX recommends your new Internal Bypass Shocks show between 4.7" to 6.2" of the shaft at ride height.

FOX FACTORY DUAL SPEED COMPRESSION (DSC) ADJUSTER SETTINGS

DSC HIGH SPEED



DSC LOW SPEED





FOX LIMITED WARRANTY

FOX Factory, Inc., a Georgia corporation having an office at 6634 Highway 53 Braselton, GA 30517 (“FOX”), makes the following LIMITED WARRANTY with respect to its suspension products:

LIMITED ONE (1) YEAR WARRANTY ON SUSPENSION PRODUCTS.

Subject to the limitations, terms and conditions hereof, FOX warrants, to the original retail owner of each new FOX suspension product, that the FOX suspension product, when new, is free from defects in materials and workmanship. Unless otherwise required by law, this warranty expires one (1) year from the date of the original FOX suspension product retail purchase from an authorized FOX dealer or from a FOX authorized Original Equipment Manufacturer where FOX suspension is included as original equipment on a purchased vehicle. If law requires a warranty duration of greater than one (1) year, then, subject to the other provisions hereof, this warranty will expire at the end of the minimum warranty period required by such law.

TERMS OF WARRANTY

This warranty is conditioned on the FOX suspension product being operated under normal conditions and properly maintained as specified by FOX. This warranty is only applicable to FOX suspensions purchased new from an authorized FOX source and is made only to the original retail owner of the new FOX suspension product and is not transferable to subsequent owners. This warranty is void if the FOX suspension product is subjected to abuse, neglect, improper or unauthorized repair, improper or unauthorized service or maintenance, alteration, modification, accident or other abnormal, excessive, or improper use.

Should it be determined by FOX in its sole and final discretion, that a FOX suspension product is covered by this warranty, it will be repaired or replaced, by a comparable model, at FOX’s sole option, which will be conclusive and binding. THIS IS THE EXCLUSIVE REMEDY UNDER THIS WARRANTY. ANY AND ALL OTHER REMEDIES AND DAMAGES THAT MAY OTHERWISE BE APPLICABLE ARE EXCLUDED, INCLUDING, BUT NOT LIMITED TO, INCIDENTAL OR CONSEQUENTIAL DAMAGES OR PUNITIVE DAMAGES.

This limited warranty does not apply to normal wear and tear, malfunctions or failures that result from abuse, improper assembly, neglect, alteration, improper maintenance, crash, misuse or collision. This limited warranty gives the consumer specific legal rights. The consumer may also have other legal rights which vary from state to state or country to country. Some states and countries do not allow the exclusion or limitation of incidental or consequential damages or warranties, and if dictated by law the above limitations or exclusions may not apply to you. If it is determined by a court of competent jurisdiction that a certain provision of this limited warranty does not apply, such determination shall not affect any other provision of this limited warranty and all other provisions shall remain in full effect.

THIS IS THE ONLY WARRANTY MADE BY FOX ON ITS SUSPENSION PRODUCTS AND COMPONENTS, AND THERE ARE NO WARRANTIES WHICH EXTEND BEYOND THE DESCRIPTION HEREIN. ANY WARRANTIES THAT MAY OTHERWISE BE IMPLIED BY LAW INCLUDING, BUT NOT LIMITED TO, ANY IMPLIED WARRANTY OF MERCHANTABILITY OR FITNESS FOR A PARTICULAR PURPOSE ARE EXCLUDED.



SHOCKS NEED LOVE TOO

FOX SHOCKS SERVICE & UPGRADES

HAVE YOUR FOX PRODUCT SERVICED OR UPGRADED BY FOX TECHNICIANS. CALL OUR OFF-ROAD AND TRUCK SERVICE CENTER AT 619.768.1800 TO GO OVER THE SERVICE AND UPGRADE OPTIONS AVAILABLE FOR YOUR PRODUCT. ONCE YOU SET UP YOUR SERVICE AND/OR UPGRADES YOU WILL RECEIVE A RETURN AUTHORIZATION NUMBER SHIPPING INSTRUCTIONS.

COMPLETE SERVICE INTERVALS

- 100% STREET USE:
EVERY 50,000 MILES
- 50% STREET/50% OFF-ROAD USE:
EVERY 10,000 MILES

SERVICE MENUS & PRICING

VISIT RIDEFOX.COM/ORSERVICE



WARNING: Cancer and Reproductive Harm –
www.P65Warnings.ca.gov