



INSTALLATION INSTRUCTIONS

Stainless Steel Cat-Back Exhaust

Ford Motorhome Class A, F53 Chassis

6.8L V-10 / 7.3L V-8 Gas

PART #956011S



ITEM	PART #	QTY	DESCRIPTION
A	999701111S	1	Super Flow Muffler
B	999701112S	1	3.50" Overaxlepipe
C	999701113S	1	3.5" Exit pipe w/ hanger
D	4170	2	3.50" Clamp
E	OHD300	1	3.0" Clamp
F	800048	1	Optional Exit Pipe Hanger drop down kit
G	500431	1	4.0" Intercooled Straight Cut Polished Tip
H	500492	1	Universal Generator Tip.

**Thank you for purchasing our Gibson Exhaust system for your vehicle.
 If you need further assistance, please do not hesitate to call our technical dept at (800) 528-3044
 Monday through Friday, 8:00 am to 5:00 pm. 9/21**

EXHAUST INSTALLATION

PART# 956011S

WHEN INSTALLING THIS EXHAUST SYSTEM MAKE SURE TO USE ALL THE PROPER SAFETY PRECAUTIONS. USE JACK STANDS WHEN UNDER TRUCK, SET PARKING BRAKE, BLOCK TIRES AND USE SAFETY GLASSES.

DO NOT WORK WITH HOT PIPES!!!

Lay out the exhaust on the floor so it looks like the drawing and compare parts with manual. Remove the factory exhaust by unbolting behind the factory muffler if you are not working on a vehicle lift to aid in the removal. Once the tail pipe has been removed un-bolt the muffler and head pipe at the clamp located directly in front of the muffler. Use wd-40 or another type of penetrating oil to remove the rubber grommets. Do not damage these they will be re used.



2. Install the muffler onto the factory head pipe and slide into the factory rubber grommets. Do not tighten.



3. Install the overaxle pipe into the muffler outlet no less than 1.5". Please note when using the clamp it needs to be placed to the furthest point of the muffler outlet to grab both pipes.



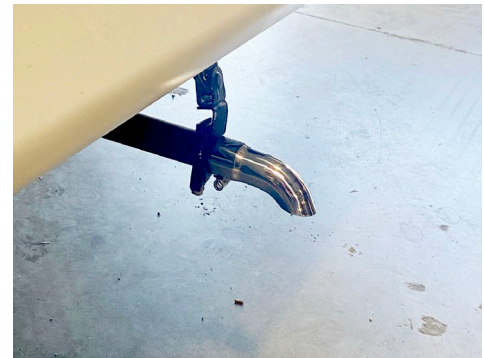
4. Slide the tip onto the Gibson exit pipe. Then install it onto the overaxle pipe, You will do this to help determine the correct height. The tip should be no closer than 1.5" to your RV body panel and stick out no less 1.5" Do not tighten



5. You may need to use the provided drop hanger to find the right height. If so, you will un bolt the factory hanger and use the kit to drop it down with the provided hardware.



6 With everything in place and sitting with proper clearance begin to tighten the clamps from the front to the back. Tighten each side evenly. We recommend using an impact wrench.



7. To Install the Generator turn down kit simply hold the tip up to your factory exhaust and mark the end of the tip. Add 1.5" to the mark towards the end of the exhaust and cut. Be sure the tip still extends past your body panel 1.5".

"MAKE SURE YOU HAVE A 1.5" CLEARANCE ON ALL PIPES FROM ALL RUBBER BRAKE LINES, SHOCK BOOTS TIRES ETC " TORQUE ALL CLAMPS TO APPROX 100 TO 150 FT LBS