



STEP 1 – PRIOR TO INSTALLATION

- A) Husky®** only approves installing the flares according to these written instructions with the hardware provided. **WARNING:** Failure to install according to these instructions will invalidate the warranty. This includes, but is not limited to using alternative installation methods, hardware, or materials. **DO NOT USE:** Loctite, SuperGlue, or similar products on the hardware or the flares.
- B) Fit:** Verify the fit of the flares to vehicle. (Some filing, sanding, or cutting may be necessary to ensure proper fit).
- C) Painting:** (Optional) if paint is desired it must be done prior to installing flares on vehicle. Clean outer surface with a good grade degreaser. **DO NOT USE LACQUER THINNER OR ENAMEL REDUCER AS A DEGREASER.** Wipe outer surface thoroughly with a tack rag prior to paint. Application of plastic adhesion promoter for ABS plastic as per your paint system manufacturer’s recommendations is required. Paint flares using a high quality enamel, or polyurethane automotive paint. If painting edge trim (not recommended), use a flex additive.
- D) Performance:** Using larger Tires may increase the area required to turn the vehicle. Some Tire/Rim combinations may require lowering bump stops and or installing steering stops to prevent tire from contacting flare.
- E) Exhaust System:** Modifications may be necessary to maintain a minimum 4” clearance between flares and exhaust pipes. (Exhaust gases should not vent directly onto flares)
- F) Metal Protection:** All exposed fasteners and bare metal should be treated with rust resistant paint **BEFORE** installing flares. Spray inner fender wells with undercoating **AFTER** flare attachments have been completed.
- G) Decals:** Flares may interfere with existing decals on vehicle. If you wish, remove decals prior to installation of flares.
- H) Care & Cleaning:** Husky fender flares are built to last; any detergent you use to wash your vehicle is sufficient to clean the flare. Do not use any harsh abrasive detergents.

Ford Extend-A-Fender® Ford OE Style® DRT Style® Fender Flares Set of 4

Set Part #2802943

Rev-3 02/14/2022

TOOLS FOR EASY INSTALLATION:

- Utility Knife
- #2 Phillips Driver
- 1/2” Wrench
- Socket Wrench
- 7/32” Socket
- 9/32” Socket
- 10mm Socket
- Grease Pencil

PLEASE READ: Dirt and debris can become lodged between the fender flares and the vehicle’s fenders, causing scratching and paint wear from vibration. Husky Liners is not responsible for any damage, and the installation of our fender flares is done with the buyer’s understanding that this scratching and paint wear may occur.

LIMITED LIFETIME WARRANTY AGAINST ANY MANUFACTURING DEFECTS

- To claim a warranty, you must provide Proof of Purchase.



The material that your product is made from can be recycled. Please also consider recycling the packaging that your product came in.



Included in Hardware Kit:

- | | | | | | | | |
|---|--|---|--|---|---|---|--|
| 1.

CL1-0022
#10 “U” Clip
6 pcs | 
SW1-0058,
#10 x 5/8” Phillips
SS Truss Screw, | 
CL1-0009,
Long “U” Clip,
Magni 565 | 
CL1-0005,
Dacromet “S”
Spring Clip, | 
SW1-0050,
10 x 5/16 Phillips
Truss Screw, | 
RV1-P001,
1/4” Black Nylon
Retainer, | 7.

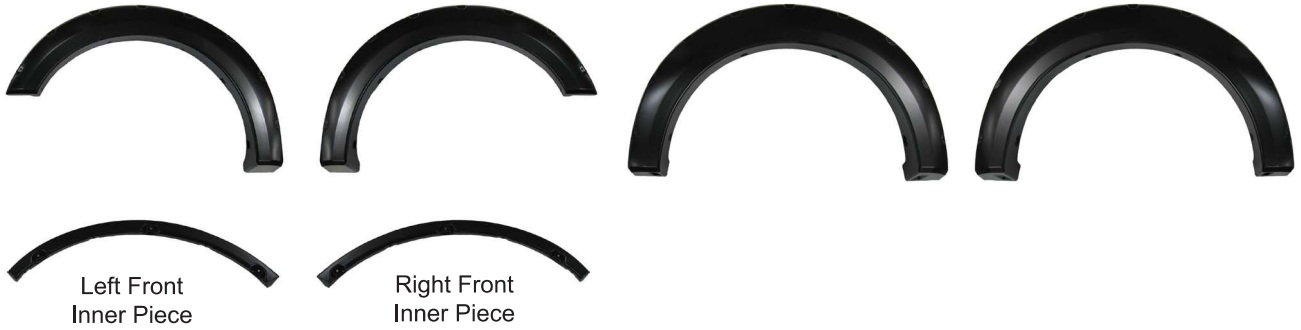
ET1-0002,
Edge Trim Tool, | |
| 8.

GP1-0025,
EX4008 Wiper
Style Edge Trim, | 9.

MT1-0014
1” x 1.5” x .01”
Black Mylar Tab,
2 pcs | 10.

MT1-0034
1” x 1.5” x .06”
Blk 3M Foam Tab,
8 pcs | | | | | |

Component List:



If your flares already have the edge trim installed, skip to Front Flare Installation Step 1.

STEP 2 - EDGE TRIM INSTALLATION

A. Peel two to three inches of red vinyl backing away from Edge Trim (GP1-0025) tape. Applying the adhesive side of the edge trim to the inner side of the flare, affix the edge trim to the top edge of the flare (the portion that comes in contact with the vehicle).

B. Press edge trim into place along the top edge of the flare in one-foot increments, pulling red vinyl backing free as you continue to work your way around the top edge of the flare. Trim flush with ends of flare.



Front Flare Installation Procedures (Passenger's Side):



Remove six factory screws with a 7mm socket wrench. Save screws for reinstallation.

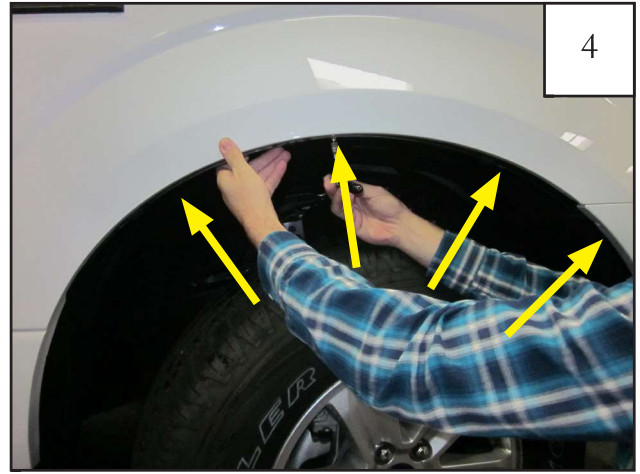
Note: For Platinum Edition, after you remove the factory flare, there are additional screws to be removed. These screws will be used for reinstallation.



Verify 3 "U"clips installed on the inner bracket as shown. If they are not installed, attach 3 "U"clips (CL1-0022) to the inner bracket as shown.



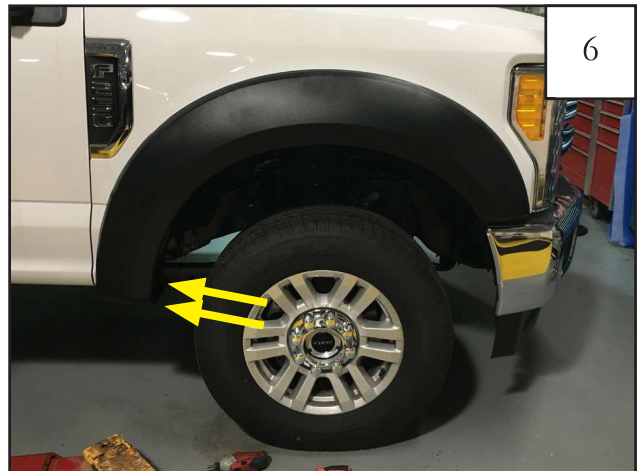
Line up the holes in the inner piece with the three uppermost factory holes. *NOTE: Driver's side inner piece is marked with an "LH" and passenger's side inner piece is marked with an "RH".*



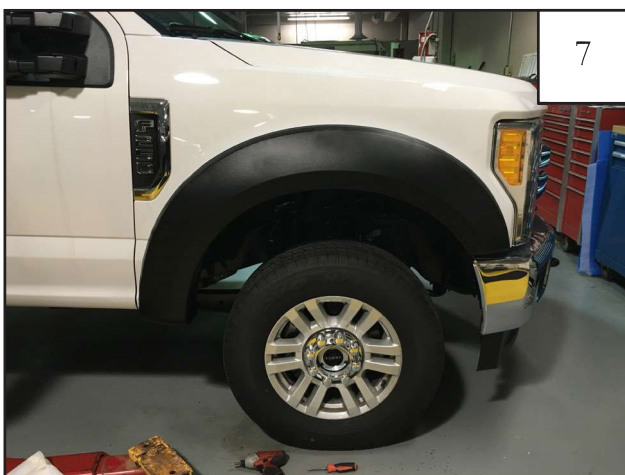
Using a 7mm socket wrench, reinstall the factory screws through the inner piece.



Position flare on fender, pressing inward on the flare, line up the flare mounting holes with the mounting clips on the inner piece. Install 3 Phillips Truss Screws (SW1-0058) through the flare and into the clips on the inner piece. Do not tighten. (3 locations)



Still holding flare to fender, re-install remaining factory screws removed in Step 1 using 7mm socket and wrench. Tighten all screws.



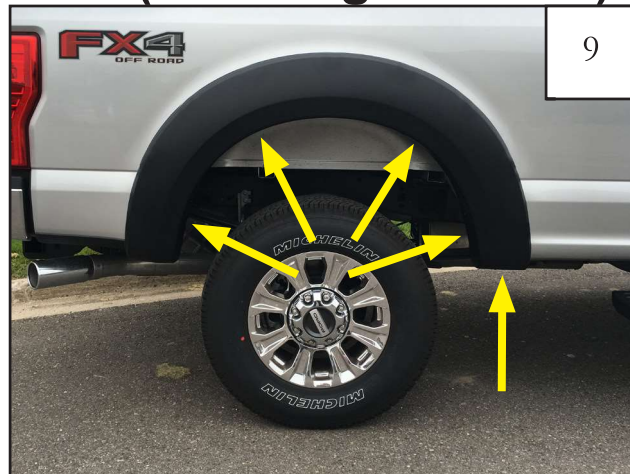
Completed front flare installation.

Rear Flare Installation Procedures (Passenger's Side):



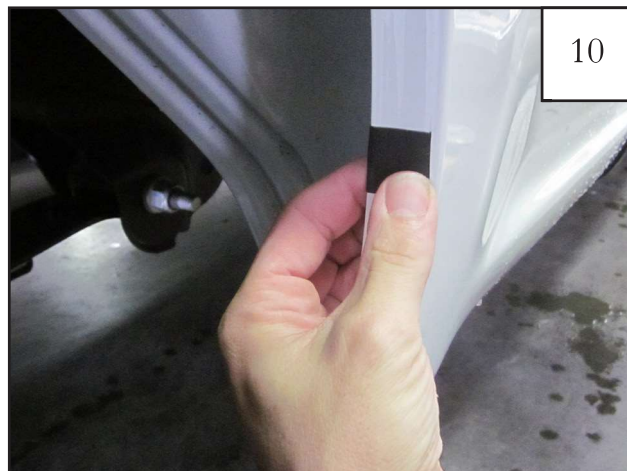
8

Remove factory fastener from rear of wheel well. Thoroughly clean the vehicle sheet metal and inner flange prior to installation.



9

Hold flare to vehicle and mark five flare hole locations with a grease pencil.



10

Wrap a Foam Tab (MT1-0034) around the wheel well sheet metal, centered over each of the upper four marks made in Step 9. Place a Mylar Tab (MT1-0014) at the mark made on the lower front of the wheel well.



11

Tab locations



12

Install a Clip (CL1-0009) over each of the four Tabs (MT1-0034) placed over the upper 4 marks made in Step 10.



13

Install a supplied "S" clip (CL1-0005) over the mylar tab installed at the lower front of the rear wheel well.



14 While holding flare to vehicle, start supplied screws (SW1-0058) through the four topmost mounting holes in flare and into the clips installed in Step 12.



15 Start a supplied screw (SW1-0050) through the flare into the clip installed in Step 13. Tighten all screws.



16 Install supplied push retainer (RV1-P0001) into flare and through factory hole at rear of wheel well.



17 Completed rear flare installation.

Edge Trim Tool Procedures:



18 Using supplied Edge Trim Tool (ET1-0002), seat edge trim against vehicle by hooking curved end under edge trim at one end of flare. Next, slide around outer edge of flare to the other end.



19 Using flat end of supplied Edge Trim Tool (ET1-0002), seat edge trim against flare by inserting straight end between edge trim and flare at one end. Next, slide around entire edge to the other end.