



**ADVENTURE  
FURTHER®**

**GRILLE MOUNT INSTRUCTIONS**  
 '19-'22, '23+ MERCEDES SPRINTER VAN  
 #73442, 32-00008-01 | #73443, 32-00009-01

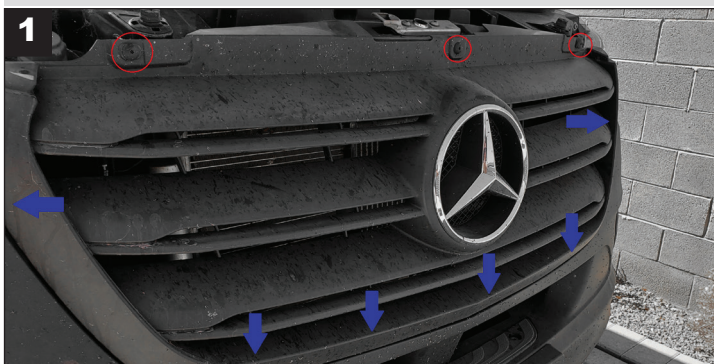
## INSTALLATION INSTRUCTIONS

**IMPORTANT:** Please read all instructions before beginning installation. These guidelines are provided in good faith to help prevent any issues arising from errors during installation. The manufacturer of this product shall not be held responsible for any user actions taken or not taken during installation. There are many details of the installation that are assumed to be general mechanical knowledge to experienced installers; which are not detailed in these instructions. These installation guidelines are intended to serve as professional recommendations and are not as a step-by-step, fail-safe installation checklist. Selection of an experienced installer is the sole responsibility of the project owner.



### INSTALL PREP

**TOOLS LIST:**  
 - 1/4" DRIVE RATCHET - 13MM SOCKET  
 - 1/4" DRIVE 6" EXTENSION - T25 & T30 TORX  
 - PANEL REMOVAL TOOL



**1** WITH THE HOOD OPEN, REMOVE THE (3) T25 SCREWS ALONG TOP FACE OF GRILLE SHROUD. THE ARROWS ON DIAGRAM INDICATE THE LOCATION OF (6) GRILLE TABS. WORKING FROM ONE SIDE OF THE VEHICLE TO THE OTHER, USE A PANEL REMOVAL TOOL TO DEPRESS THE GRILLE-TABS WHILE PULLING GRILLE FORWARD.

FOR VEHICLE EQUIPPED WITH FRONT FACING CAMERAS, CAREFULLY REMOVE THE CAMERA FROM ITS RETAINING CLIPS BEFORE REMOVING GRILLE. \*NOTATE THE ORIENTATION TO ENSURE CORRECT RE-INSTALLATION.\*

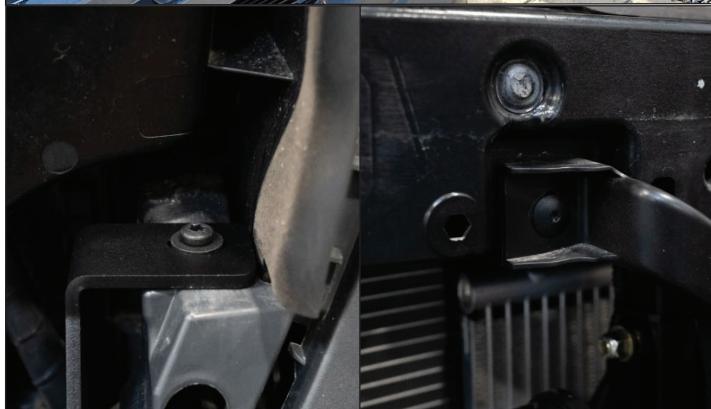


**2** REMOVE THE (2) T30 SCREWS ON EACH SIDE OF THE GRILLE OPENING. 1) LOCATED ABOVE THE HORN ON THE DRIVER SIDE. 2) LOCATED DIRECTLY ACROSS ON PASSENGER SIDE. SET SCREWS ASIDE FOR REUSE AT ASSEMBLY.



**3** REMOVE THE (2) T25 SCREWS THAT SECURE THE VERTICAL SUPPORT IN THE MIDDLE OF THE UPPER CORE SUPPORT. SET SCREWS ASIDE FOR REUSE AT ASSEMBLY.

### GRILLE MOUNT INSTALLATION



USING A 13MM SOCKET, TEMPORARILY REMOVE THE HORN. WITH THE HORN OUT OF THE WAY, GENTLY WORK THE GRILLE MOUNT INTO POSITION BY PULLING THE VERTICAL SUPPORT FORWARD TO MAKE ROOM TO ALIGN THE MOUNTING HOLE. SECURELY FASTEN THE GRILLE MOUNT USING THE OEM (2) T30 AND (2) T25 TORX HARDWARE FROM STEPS 2 & 3.

RE-MOUNT THE HORN INTO PLACE. \*PULLING THE BUMPER COVER FORWARD HELPS IN GETTING THE HORN HARDWARE BACK IN PLACE\*. SLIGHT BENDING (OR TWISTING) OF THE OEM HORN BRACKET MIGHT BE NECESSARY SO THE HORN DOES NOT REST ON THE MOUNTING BRACKET.

### GRILLE RE-INSTALLATION

WORKING IN REVERSE, BEGIN BY POSITIONING THE GRILLE OVER THE NEWLY INSTALLED GRILLE MOUNT, ALLOWING THE 2-LIGHT TABS TO EXTEND OUTSIDE OF THE GRILLE. (IF EQUIPPED, RE-INSTALL THE FRONT END CAMERA IN THE CORRECT ORIENTATION.)

CAREFULLY CLIP THE (6) SURROUNDING GRILLE-TABS AND REFASTEN THE (3) T25 TORX SCREWS ALONG THE TOP FACE OF THE GRILLE SHROUD.