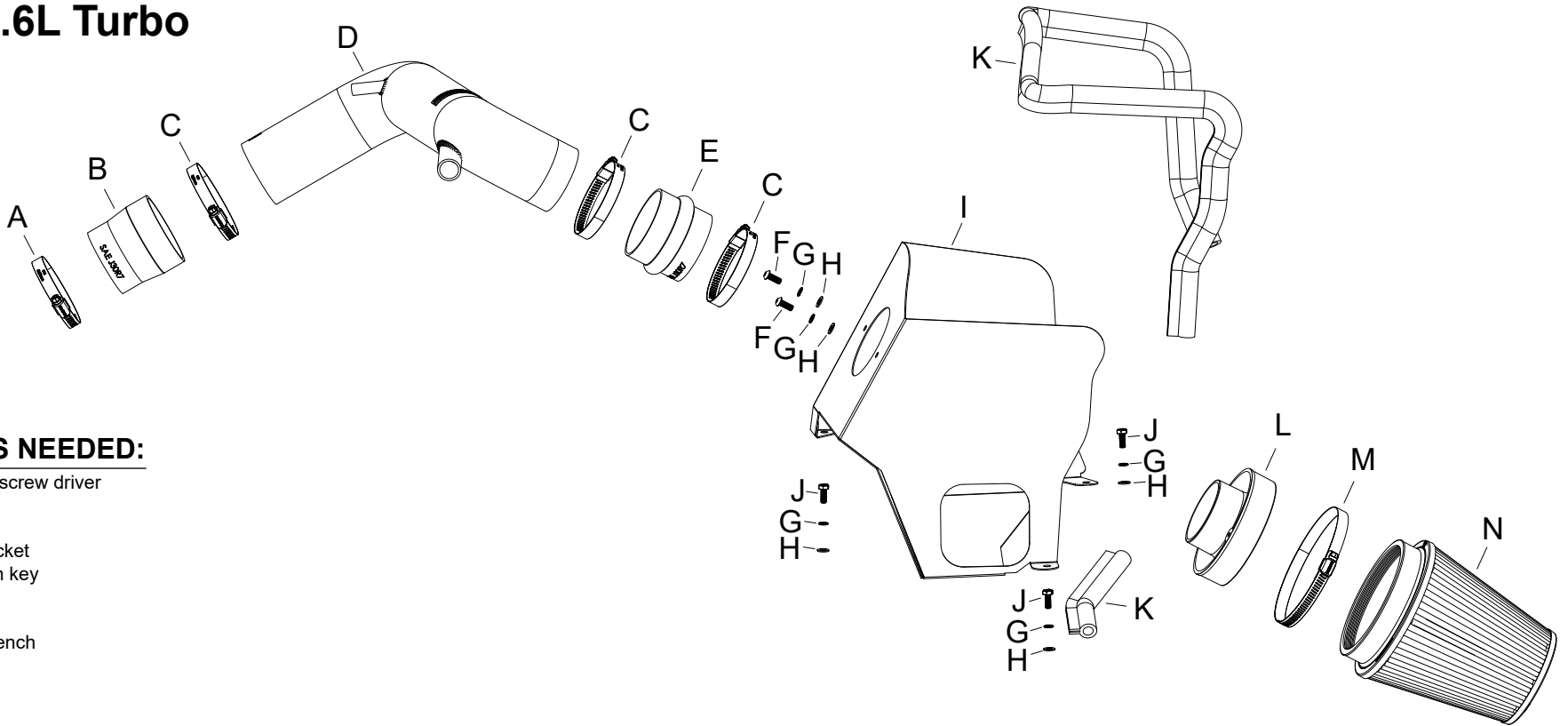




LEGAL IN CALIFORNIA ONLY FOR RACING VEHICLES WHICH MAY NEVER BE USED, REGISTERED OR LICENSED FOR USE UPON A HIGHWAY. See knfilters.com for CARB status on each part for a specific vehicle

INSTALLATION INSTRUCTIONS

69-5323TS HYUNDAI 2019-20 Veloster L4-1.6L Turbo



TOOLS NEEDED:

flat blade screw driver
ratchet
extension
10mm socket
4mm allen key
pliers
cutters
10mm wrench

PARTS LIST:

Description	Qty.	Part #	Description	Qty.	Part #	Description	Qty.	Part #
A HOSE CLAMP; #44	1	08577	F BOLT; M6 X 1 X 16MM BTNHD	2	07730	K EDGE TRIM; (48"L)	1	102485
B HOSE; 3" TO 2.75"ID X 3"L	1	08096	G WASHER; M6 SPLIT LOCK ZINC	5	1-3025	L ADAPTER; FILTER, 3.0"OD	1	21569
C HOSE CLAMP; #48	3	08601	H WASHER; 6MM FLAT	5	08269	M CLAMP; #88	1	KITHS88
D TUBE; 3.25"OD X 27"L, (AL)	1	25828S	I HEAT SHIELD	1	073296	N AIR FILTER	1	RU-2800
E HOSE; HUMP 3"ID X 2.5"L	1	087121	J BOLT; M6-1 X 16MM, HEX	3	07812			

If you need any assistance please call 1-800-858-3333 to speak with a representative in our Customer Service Center before returning the product.

NOTE: FAILURE TO FOLLOW INSTALLATION INSTRUCTIONS AND NOT USING THE PROVIDED HARDWARE MAY DAMAGE THE INTAKE TUBE, THROTTLE BODY AND ENGINE.

TO START:

1. Turn off the ignition and disconnect the negative battery cable.

NOTE: Disconnecting the negative battery cable erases pre-programmed electronic memories. Write down all memory settings before disconnecting the negative battery cable. Some radios will require an anti-theft code to be entered after the battery is reconnected. The anti-theft code is typically supplied with your owner's manual. In the event your vehicles anti-theft code cannot be recovered, contact an authorized dealership to obtain your vehicles anti-theft code.



2. Lift the decorative engine cover off and set aside.



3. Release the spring clamp that secures the PCV vent line and then disconnect PCV line from the intake tube and unhook it from the clip. Loosen the hose clamp that secures the intake to the throttle body.



4. Release the spring clamp that secures the BOV hose to the intake tube and then disconnect BOV hose from the intake tube.



5. Release the two spring clips that secure the upper air filter housing and then remove the upper air filter housing and intake tube from the vehicle.



6. Push in the center of the fresh air intake duct retaining pins and then remove the pins from the vehicle.



7. Remove the three bolts that secure the lower air filter housing and then remove the housing from the vehicle.

NOTE: K&N Engineering, Inc., recommends that customers do not discard factory air intake.



8. Cut the provided edge trim into two sections as shown.



9. Install the 40.5" long edge trim onto the heat shield as shown.



10. Install the filter adapter into the heat shield and secure with the provided hardware.



11. Install the heat shield into the vehicle as shown and secure with the provided hardware.



12. Separate the fresh air duct from the factory air filter housing.



13. Install the fresh air duct into the heat shield and secure it to the original location with the factory retaining pins.



14. Install the provided coupler (08096) onto the turbo inlet and secure with the provided hose clamp.



15. Install the provided coupler (087121) onto the filter adapter and secure with the provided hose clamp.



16. Install the K&N® intake tube into the coupler at the turbo inlet and then at the filter adapter, adjust the tube for best fit and then secure with the provided hose clamp.



17. Connect the PCV vent and BOV hose to the K&N® intake tube and secure with the factory spring clamps.



18. Install the K&N® air filter onto the filter adapter and secure with the provided hose clamp.



19. Reinstall the engine cover.



20. Reconnect the vehicle's negative battery cable. Double check to make sure everything is tight and properly positioned before starting the vehicle.

21. It will be necessary for all K&N® high flow intake systems to be checked periodically for realignment, clearance and tightening of all connections. Failure to follow the above instructions or proper maintenance may void warranty.

ROAD TESTING:

1. Start the engine with the transmission in neutral or park, and the parking brake engaged. Listen for air leaks or odd noises. For air leaks secure hoses and connections. For odd noises, find cause and repair before proceeding. This kit will function identically to the factory system except for being louder and much more responsive.

2. Test drive the vehicle. Listen for odd noises or rattles and fix as necessary.

3. If road test is fine, you can now enjoy the added power and performance from your kit.

4. K&N Engineering, Inc., requires cleaning the intake system's air filter element every 100,000 miles. When used in dusty or off-road environments, our filters will require cleaning more often. We recommend that you visually inspect your filter once every 25,000 miles to determine if the screen is still visible. When the screen is no longer visible some place on the filter element, it is time to clean it. To clean and re-oil, purchase our filter Recharger® service kit, part number 99-5050 or 99-5000 and follow the easy instructions.

LEGAL IN CALIFORNIA ONLY FOR RACING VEHICLES WHICH MAY NEVER BE USED, REGISTERED OR LICENSED FOR USE UPON A HIGHWAY.

See knfilters.com for CARB status on each part for a specific vehicle