



# TYPHOON INTAKE SYSTEMS

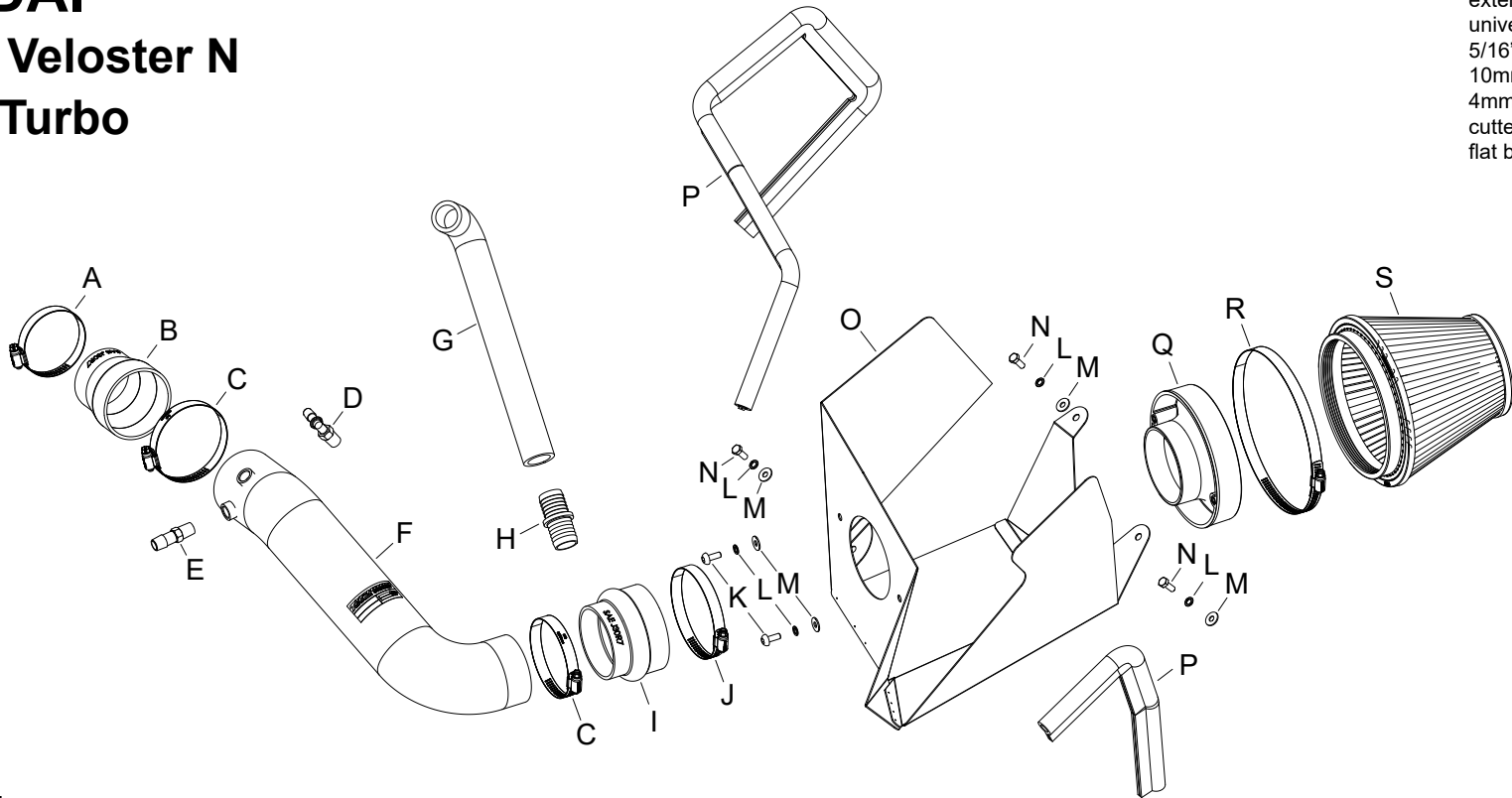
NOT LEGAL FOR SALE OR USE ON ANY POLLUTION CONTROLLED MOTOR VEHICLE IN CALIFORNIA OR STATES ADOPTING CALIFORNIA EMISSION PROCEDURES.  
See knfilters.com for CARB status on each part for a specific vehicle

## INSTALLATION INSTRUCTIONS

**69-5324TS**  
**HYUNDAI**  
**2019-20 Veloster N**  
**L4-2.0L Turbo**

### TOOLS NEEDED:

- 9/16" wrench
- ratchet
- extension
- universal
- 5/16" socket
- 10mm socket
- 4mm allen key
- cutter
- flat blade screw driver



### PARTS LIST:

Description	Qty.	Part #	Description	Qty.	Part #	Description	Qty.	Part #
A HOSE CLAMP #40	1	08554	H FITTING; VENT STRT, 1" X 1"	1	08296	O HEAT SHIELD	1	073297
B HOSE; 3" TO 2.5"ID X 3"L TPRD	1	08713	I HOSE; HUMP 3.5" TO 3"ID	1	084079	P EDGE TRIM (48")	1	102485A
C HOSE CLAMP #48	2	08601	J HOSE CLAMP #56	1	08620	Q ADAPTER; UNIVERSAL, 6"	1	21512-1
D FITTING; VENT 1/4NPT, 90DEG.	1	08523	K BOLT; M6 X 1.00 X 16MM, SS	2	07730	R HOSE CLAMP; #104	1	08697
E VENT; STRT, 1/2" HOSE, NPT	1	080022	L WASHER, M6 SPLIT LOCK ZINC	5	1-3025	S FILTER	1	RF-10480
F INTAKE TUBE	1	25829S	M WASHER; 6MM FLAT, SS	5	08269			
G HOSE; 1"ID X 11"L, 90DEG	1	08479	N BOLT; 6MM-1.00 X 16MM, SS	3	07812			

If you need any assistance please call 1-800-858-3333 to speak with a representative in our Customer Service Center before returning the product.

**NOTE: FAILURE TO FOLLOW INSTALLATION INSTRUCTIONS AND NOT USING THE PROVIDED HARDWARE MAY DAMAGE THE INTAKE TUBE, THROTTLE BODY AND ENGINE.**

### TO START:

1. Turn off the ignition and disconnect the negative battery cable.  
**NOTE: Disconnecting the negative battery cable erases pre-programmed electronic memories. Write down all memory settings before disconnecting the negative battery cable. Some radios will require an anti-theft code to be entered after the battery is reconnected. The anti-theft code is typically supplied with your owner's manual. In the event your vehicles anti-theft code cannot be recovered, contact an authorized dealership to obtain your vehicles anti-theft code.**



2. Release the spring clamps that secure the breather hoses and BOV hose and then disconnect them from the factory intake tube.



3. Loosen the two hose clamps that secure the factory intake tube and then remove the intake tube from the vehicle.



4. Remove the two plastic retaining clips that secure the fresh air intake duct. Remove the three bolts that secure the air filter housing and then remove the assembly from the vehicle.  
**NOTE: K&N Engineering, Inc., recommends that customers do not discard factory air intake.**



5. Cut the provided edge trim into sections of 13" and 34", install the edge trim onto the heat shield as shown.



6. Install the filter adapter into the heat shield as shown and secure with the provided hardware.





7. Install the heat shield into the vehicle and secure with the provided hardware.



8. Install the provided couplers onto the Turbo inlet (08713) and filter adapter (084079) and secure with the provided hose clamps.



9. Cut the provided BOV hose 1" from the elbow as shown.



10. Install the provided union fitting into the elbow as shown.



11. Install the elbow assembly into the factory BOV hose as shown.



12. Install the provided vent fittings into the K&N® intake tube as shown.

**NOTE: Plastic NPT fittings are easy to cross thread. Install the vent fitting "hand" tight, then turn it two complete turns with a wrench.**



13. Install the K&N® intake tube into the coupler at the turbo and then into the coupler at the filter adapter, align the tube for best fit and then secure with the provided hose clamp.



14. Connect the factory vent lines to the fittings installed into the K&N® intake tube and secure with the factory spring clamps.



15. Connect the BOV elbow to the K&N® intake tube as shown.



16. Install the K&N® air filter and secure with the provided hose clamp.

**NOTE: Drycharger® air filter wrap; part # RF-1048DK is available to purchase separately. To learn more about Drycharger® filter wraps or look up color availability please visit <http://www.knfilters.com>®.**



17. Reconnect the vehicle's negative battery cable. Double check to make sure everything is tight and properly positioned before starting the vehicle.

18. It will be necessary for all K&N® high flow intake systems to be checked periodically for realignment, clearance and tightening of all connections. Failure to follow the above instructions or proper maintenance may void warranty.

#### ROAD TESTING:

1. Start the engine with the transmission in neutral or park, and the parking brake engaged. Listen for air leaks or odd noises. For air leaks secure hoses and connections. For odd noises, find cause and repair before proceeding. This kit will function identically to the factory system except for being louder and much more responsive.

2. Test drive the vehicle. Listen for odd noises or rattles and fix as necessary.

3. If road test is fine, you can now enjoy the added power and performance from your kit.

4. K&N Engineering, Inc., requires cleaning the intake system's air filter element every 100,000 miles. When used in dusty or off-road environments, our filters will require cleaning more often. We recommend that you visually inspect your filter once every 25,000 miles to determine if the screen is still visible. When the screen is no longer visible some place on the filter element, it is time to clean it. To clean and re-oil, purchase our filter Recharger® service kit, part number 99-5050 or 99-5000 and follow the easy instructions.

**NOT LEGAL FOR SALE OR USE ON ANY POLLUTION CONTROLLED MOTOR VEHICLE IN CALIFORNIA OR STATES ADOPTING CALIFORNIA EMISSION PROCEDURES.**

See [knfilters.com](http://knfilters.com) for CARB status on each part for a specific vehicle