



TYPHOON INTAKE SYSTEMS

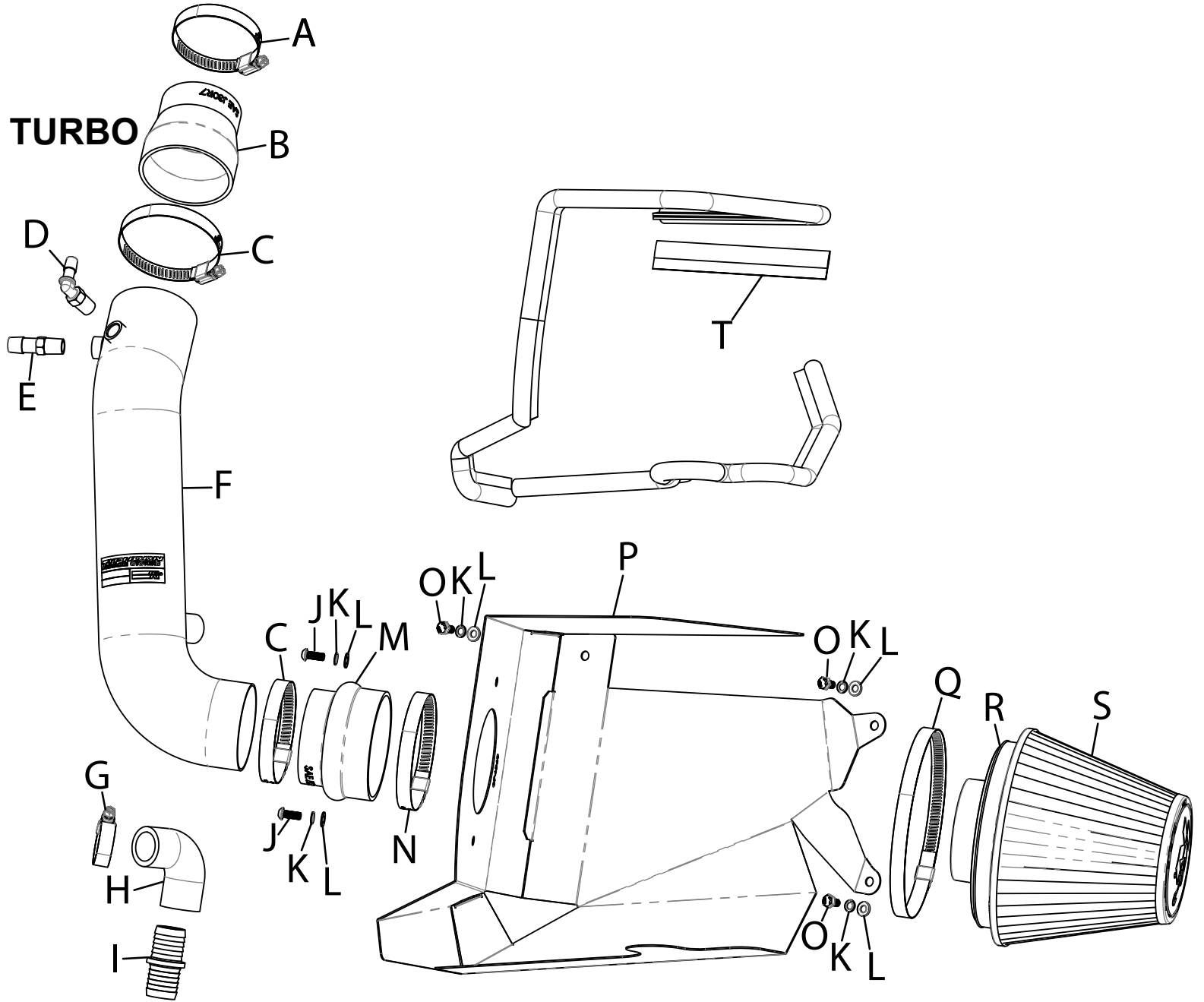
NOT LEGAL FOR SALE OR USE ON ANY POLLUTION CONTROLLED MOTOR VEHICLE IN CALIFORNIA OR STATES ADOPTING CALIFORNIA EMISSION PROCEDURES.
See knfilters.com for CARB status on each part for a specific vehicle

INSTALLATION INSTRUCTIONS

69-5330TS
HYUNDAI
2022-23 KONA N TURBO
L4-2.0L

TOOLS NEEDED:

- Flat blade screw driver
- Pliers
- Side Cutters
- Ratchet
- Extension
- 10mm socket
- 4mm allen key
- ½" wrench
- 9/16" wrench



PARTS LIST:

Description	Qty.	Part #	Description	Qty.	Part #	Description	Qty.	Part #
A HOSE CLAMP; #40	1	08554	H HOSE; 1"ID X 11"L, 90DEG	1	08479	O BOLT; M6-1 X 16MM, HEX	3	07812
B HOSE; 3" TO 2.5"ID X 3"L	1	08713	I FITTING; UNION 1"OD X 1"OD	1	08296	P HEAT SHIELD	1	074569
C HOSE CLAMP; #48	2	08601	J BOLT; M6 X 1 X 16MM, BTNHD	2	07730	Q HOSE CLAMP; #104	1	08697
D VENT; 1/4"NPT TO 3/8"OD	1	08523	K WASHER; M6 SPLIT LOCK	5	1-3025	R ADAPTER; UNIV. 6" FILTER	1	21512-1
E VENT; 1/2" HOSE, 1/4"NPT	1	080022	L WASHER; 6MM FLAT	5	08269	S AIR FILTER	1	RU-1048
F TUBE; 3"OD X 19"L SILVER	1	25829S	M HOSE; HUMP 3.5" TO 3"ID	1	084079	T EDGE TRIM; (70"L)	1	102454
G HOSE CLAMP; #16	1	08413	N HOSE CLAMP; #56	1	08620			

If you need any assistance please call 1-800-858-3333 to speak with a representative in our Customer Service Center before returning the product.

NOTE: FAILURE TO FOLLOW INSTALLATION INSTRUCTIONS AND NOT USING THE PROVIDED HARDWARE MAY DAMAGE THE INTAKE TUBE, THROTTLE BODY AND ENGINE.

TO START:

1. Turn off the ignition and disconnect the negative battery cable.
NOTE: Disconnecting the negative battery cable erases pre-programmed electronic memories. Write down all memory settings before disconnecting the negative battery cable. Some radios will require an anti-theft code to be entered after the battery is reconnected. The anti-theft code is typically supplied with your owner's manual. In the event your vehicles anti-theft code cannot be recovered, contact an authorized dealership to obtain your vehicles anti-theft code.



2. Release the spring clamp that secures the BOV hose to the factory intake tube and then disconnect the BOV hose from the intake tube.



3. Release the spring clamps that secures the EVAP and CCV hoses and then disconnect the hoses from the factory intake tube.



4. Loosen the hose clamp that secures the factory intake tube to the turbo inlet.



5. Loosen the hose clamp that secures the factory intake tube to the air filter housing and then remove the intake tube from the vehicle.



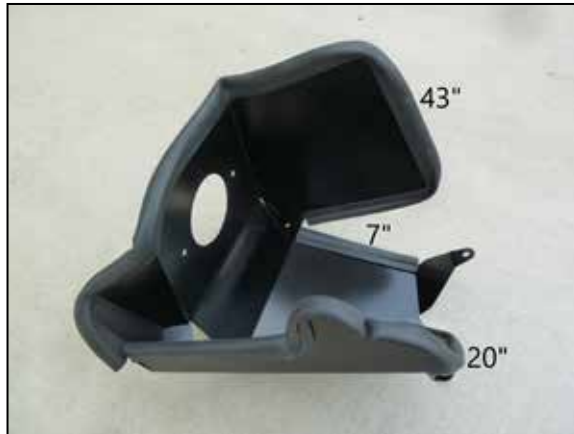
6. Release the centers of the retaining pins that secure the fresh air duct and then remove the pins.



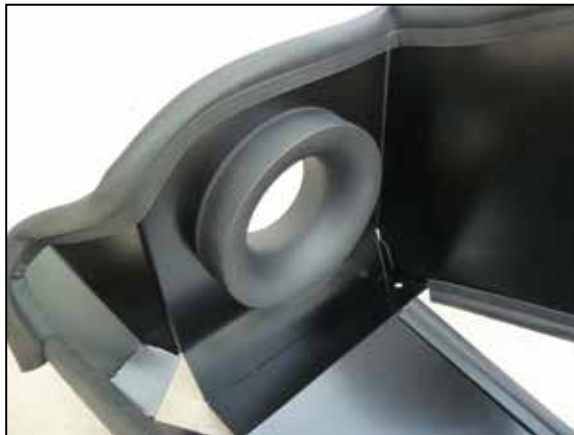
7. Remove the rear air filter housing mounting bolt.



8. Remove the two remaining air filter housing mounting bolts and then remove the air filter housing from the vehicle.



9. Cut the provided edge trim into lengths of 7", 20" and 43" and install them onto the heat shield as shown.



10. Install the filter adapter into the heat shield and secure with the provided hardware.



11. Install the heat shield assembly into the vehicle and secure with the provided hardware.



12. Install the BOV hose union into the factory BOV hose and secure with the factory spring clamp.



13. Install the step coupler onto the turbo inlet and secure with the provided hose clamp.



14. Install the hump hose onto the filter adapter and secure with the provided hose clamp.



15. Install the provided CCV and EVAP fittings into the intake tube as shown. Apply pipe thread sealant to the threads before installation.



16. Cut 9" off the straight section of the provided BOV hose and then install the 90-degree section onto the intake tube and secure with the provided hose clamp.



17. Install the K&N intake tube into the coupler at the turbo inlet and then into the hump coupler, adjust the tube for best fit and then secure with the provided hose clamps.



18. Connect the EVAP and CCV hoses to the fitting installed into the intake tube and secure with the factory spring clamps.



19. Connect the BOV hose to the union installed into the 90 degree hose on the intake tube and secure with the factory spring clamp.



20. Install the K&N air filter onto the filter adapter and secure with the provided hose clamp.



21. Install the K&N decal onto the intake tube as shown.



22. Reconnect the vehicle's negative battery cable. Double check to make sure everything is tight and properly positioned before starting the vehicle.

23. It will be necessary for all K&N® high flow intake systems to be checked periodically for realignment, clearance and tightening of all connections. Failure to follow the above instructions or proper maintenance may void warranty.

ROAD TESTING:

1. Start the engine with the transmission in neutral or park, and the parking brake engaged. Listen for air leaks or odd noises. For air leaks secure hoses and connections. For odd noises, find cause and repair before proceeding. This kit will function identically to the factory system except for being louder and much more responsive.
2. Test drive the vehicle. Listen for odd noises or rattles and fix as necessary.
3. If road test is fine, you can now enjoy the added power and performance from your kit.
4. K&N Engineering, Inc., requires cleaning the intake system's air filter element every 100,000 miles. When used in dusty or off-road environments, our filters will require cleaning more often. We recommend that you visually inspect your filter once every 25,000 miles to determine if the screen is still visible. When the screen is no longer visible some place on the filter element, it is time to clean it. To clean and re-oil, purchase our filter Recharger® service kit, part number 99-5050 or 99-5000 and follow the easy instructions.

NOT LEGAL FOR SALE OR USE ON ANY POLLUTION CONTROLLED MOTOR VEHICLE IN CALIFORNIA OR STATES ADOPTING CALIFORNIA EMISSION PROCEDURES.

See knfilters.com for CARB status on each part for a specific vehicle