



AIRCHARGER®

HIGH-FLOW INTAKE KITS

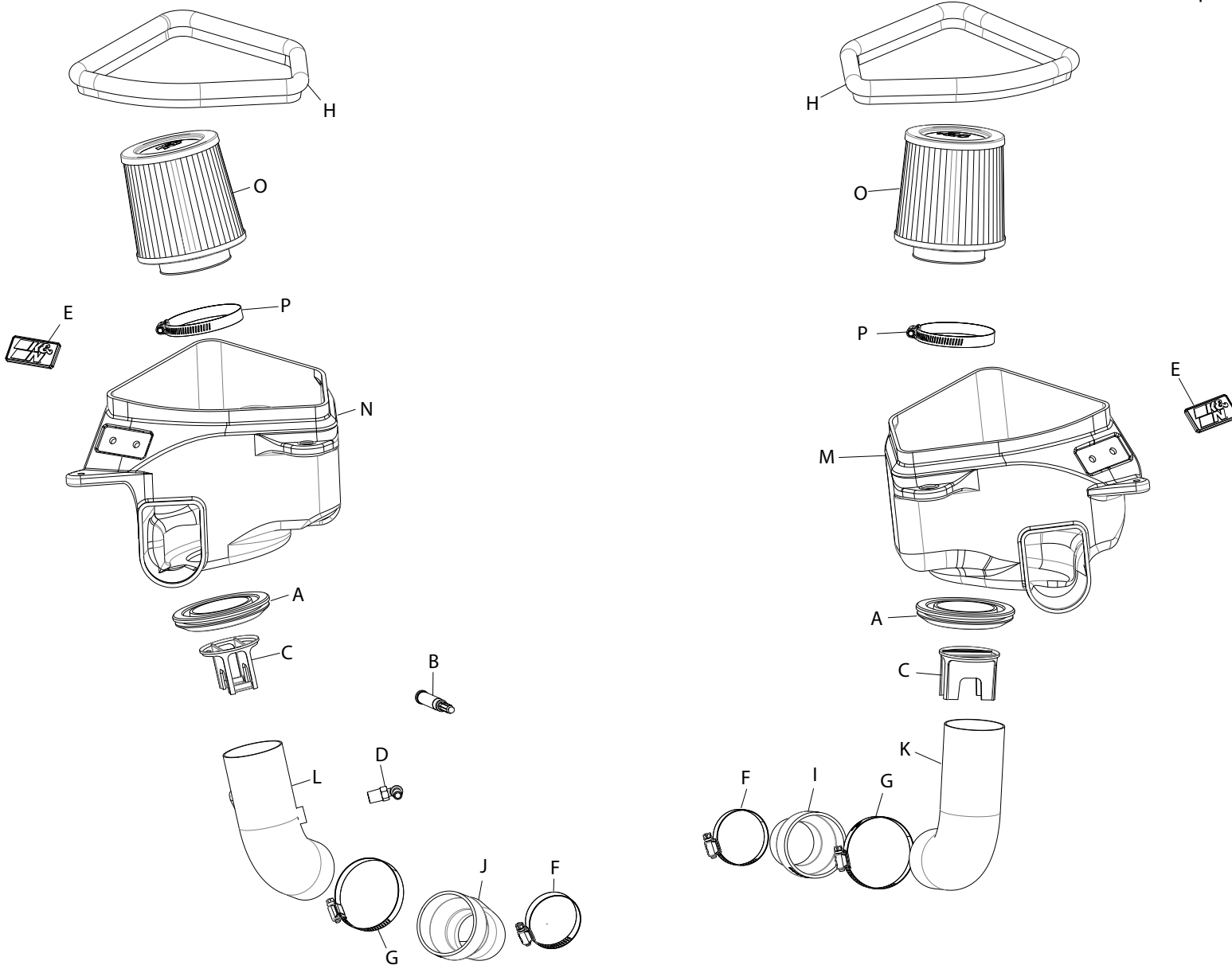
NOT LEGAL FOR SALE OR USE ON ANY POLLUTION CONTROLLED MOTOR VEHICLE IN CALIFORNIA OR STATES ADOPTING CALIFORNIA EMISSION PROCEDURES.
See knfilters.com for CARB status on each part for a specific vehicle

INSTALLATION INSTRUCTIONS

69-7086TC
NISSAN
2023 400Z
V6-3.0L Twin turbo

TOOLS NEEDED:

- 1/4" Drive ratchet
- 10mm socket
- 8mm socket
- 1/4" Drive universal extension
- Long flat blade screw driver
- Pliers
- Phillips screw driver



PARTS LIST:

Description	Qty.	Part #	Description	Qty.	Part #	Description	Qty.	Part #
A SEAL; TUBE TO AIRBOX, 2.75"	2	084166	G HOSE CLAMP; #44	2	08577	M AIRBOX; 69-7086, RIGHT SIDE	1	087565
B SUPER GLUE, 3G DRIP PROOF	1	409	H EDGE TRIM; 3/4" BULB, 32"L	2	102479	N AIRBOX; 69-7086, LEFT SIDE	1	087564
C MAF INSERT; AIR STRTNR	2	9-21070	I HOSE; 2.75" TO 2"ID X 3"L	1	5-1045	O AIR FILTER	2	RP-3221
D VENT; 1/4"NPT 3/8"OD BARB	1	08523	J HOSE; 2" ID TO 2.75" ID, 40DEF	1	084165	P HOSE CLAMP; #48	2	08601
E BADGE; PLASTIC, K&N LOGO	2	088096	K TUBE; GUNMETAL, DRIVE	1	25924C			
F HOSE CLAMP; #36	2	08530	L TUBE; GUNMETAL, PASS	1	25923C			

If you need any assistance please call 1-800-858-3333 to speak with a representative in our Customer Service Center before returning the product.

NOTE: FAILURE TO FOLLOW INSTALLATION INSTRUCTIONS AND NOT USING THE PROVIDED HARDWARE MAY DAMAGE THE INTAKE TUBE, THROTTLE BODY AND ENGINE.

TO START:

1. Turn off the ignition and disconnect the negative battery cable.
NOTE: Disconnecting the negative battery cable erases pre-programmed electronic memories. Write down all memory settings before disconnecting the negative battery cable. Some radios will require an anti-theft code to be entered after the battery is reconnected. The anti-theft code is typically supplied with your owner's manual. In the event your vehicles anti-theft code cannot be recovered, contact an authorized dealership to obtain your vehicles anti-theft code.



2. Remove the bolts that secure the passenger side air filter housing to the core support.



3. Release the clip holding the coolant hose and remove the clip from the bracket.



4. Unhook the mass air sensor wiring harness from the air filter housing.



5. Release the locking clip that secures the factory air filter housing to the intake tube by pulling it away from the tube. **NOTE: the picture is showing the clip in the released position while the air filter housing is removed.**



6. Disconnect the mass air sensor electrical connection from the passenger side mass air sensor. Remove the passenger side air filter housing assembly from the vehicle.



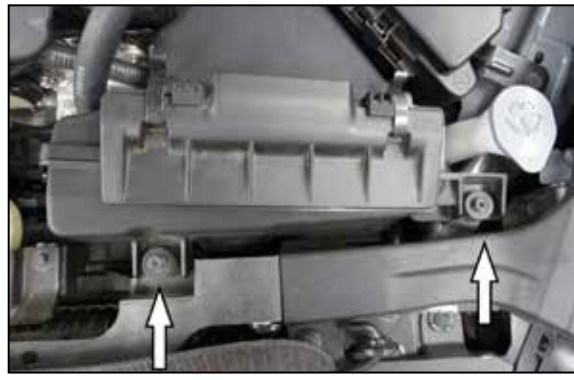
7. Remove the bolt that secures the lower air filter housing mount and then remove the mount from the vehicle.



8. Loosen the clamp that secures the passenger side intake tube to the turbo and then separate the intake tube from the turbo.



9. Release the Spring clamp that secures the CCV hose to the passenger side intake tube and then separate the hose from the tube, next remove the intake tube from the vehicle.



10. Remove the two bolts that secure the driver side air filter housing to the core support.



11. Unhook the mass air sensor wiring harness from the driver side air filter housing.



12. Release the locking clip that secures the factory air filter housing to the intake tube by pulling it away from the tube. **NOTE: the picture is showing the clip in the released position while the air filter housing is removed.**



13. Disconnect the mass air sensor electrical connection from the driver side mass air sensor. Remove the driver side air filter housing assembly from the vehicle.



14. Loosen the hose clamp that secures the driver side intake tube to the turbo inlet and then remove the tube from the vehicle.



15. Install the elbow hose provided onto the passenger side turbo as shown. Do not secure the hose with the hose clamp yet as it will need to be adjusted for best fit in a later step.



16. Install the step coupler provided onto the driver side turbo inlet and secure with the provided hose clamp.



17. Remove the mass air sensors from the factory housings and install them into the K&N intake tubes as shown using the factory hardware.



18. Apply small drops of the provided super glue to the lip of the mass air sensor grids and then install the grids into the K&N intake tubes as shown.



19. Install the provided 90 degree CCV fitting into the K&N passenger side intake tube as shown.



20. Install the passenger side K&N intake tube into the coupler but do not secure it with the hose clamp yet.



21. Connect the CCV hose to the 90 degree fitting installed into the K&N intake tube and secure with the factory spring clamp.



22. Reconnect the passenger side mass air sensor electrical connection.



23. Install the tube seals into the K&N air filter housings.



24. Snap the K&N badge into the K&N air filter housings.



25. Install the provided edge trim onto the K&N air filter housings as shown.



26. Carefully install the passenger side K&N air filter housing into the vehicle so that the intake tube passes through the seal. Adjust the intake tube for best fit and then carefully remove the air filter housing from the vehicle. Secure all the hose clamps with the intake tube in position, reinstall the air filter housing and secure with the factory hardware.



27. Install the K&N air filter onto the intake tube and secure with the provided hose clamp. **NOTE: using a small 1/4" drive ratchet with a 8mm socket is the ideal way to secure the hose clamp.**



28. Install the driver side intake tube into the coupler on the turbo inlet but do not secure the hose clamp yet as the tube position will need to be adjusted.



29. Reconnect the driver side mass air sensor electrical connection.



30. Carefully install the driver side K&N air filter housing into the vehicle so that the intake tube passes through the seal. Adjust the intake tube for best fit and then carefully remove the air filter housing from the vehicle. Secure all the hose clamps with the intake tube in position, reinstall the air filter housing and secure with the factory hardware.



31. Install the K&N air filter onto the intake tube and secure with the provided hose clamp. **NOTE: using a small 1/4" drive ratchet with a 8mm socket is the ideal way to secure the hose clamp.**



32. Reconnect the vehicle's negative battery cable. Double check to make sure everything is tight and properly positioned before starting the vehicle.

33. It will be necessary for all K&N® high flow intake systems to be checked periodically for realignment, clearance and tightening of all connections. Failure to follow the above instructions or proper maintenance may void warranty.

ROAD TESTING:

1. Start the engine with the transmission in neutral or park, and the parking brake engaged. Listen for air leaks or odd noises. For air leaks secure hoses and connections. For odd noises, find cause and repair before proceeding. This kit will function identically to the factory system except for being louder and much more responsive.

2. Test drive the vehicle. Listen for odd noises or rattles and fix as necessary.

3. If road test is fine, you can now enjoy the added power and performance from your kit.

4. K&N Engineering, Inc., requires cleaning the intake system's air filter element every 100,000 miles. When used in dusty or off-road environments, our filters will require cleaning more often. We recommend that you visually inspect your filter once every 25,000 miles to determine if the screen is still visible. When the screen is no longer visible some place on the filter element, it is time to clean it. To clean and re-oil, purchase our filter Recharger® service kit, part number 99-5050 or 99-5000 and follow the easy instructions.

NOT LEGAL FOR SALE OR USE ON ANY POLLUTION CONTROLLED MOTOR VEHICLE IN CALIFORNIA OR STATES ADOPTING CALIFORNIA EMISSION PROCEDURES.

See knfilters.com for CARB status on each part for a specific vehicle