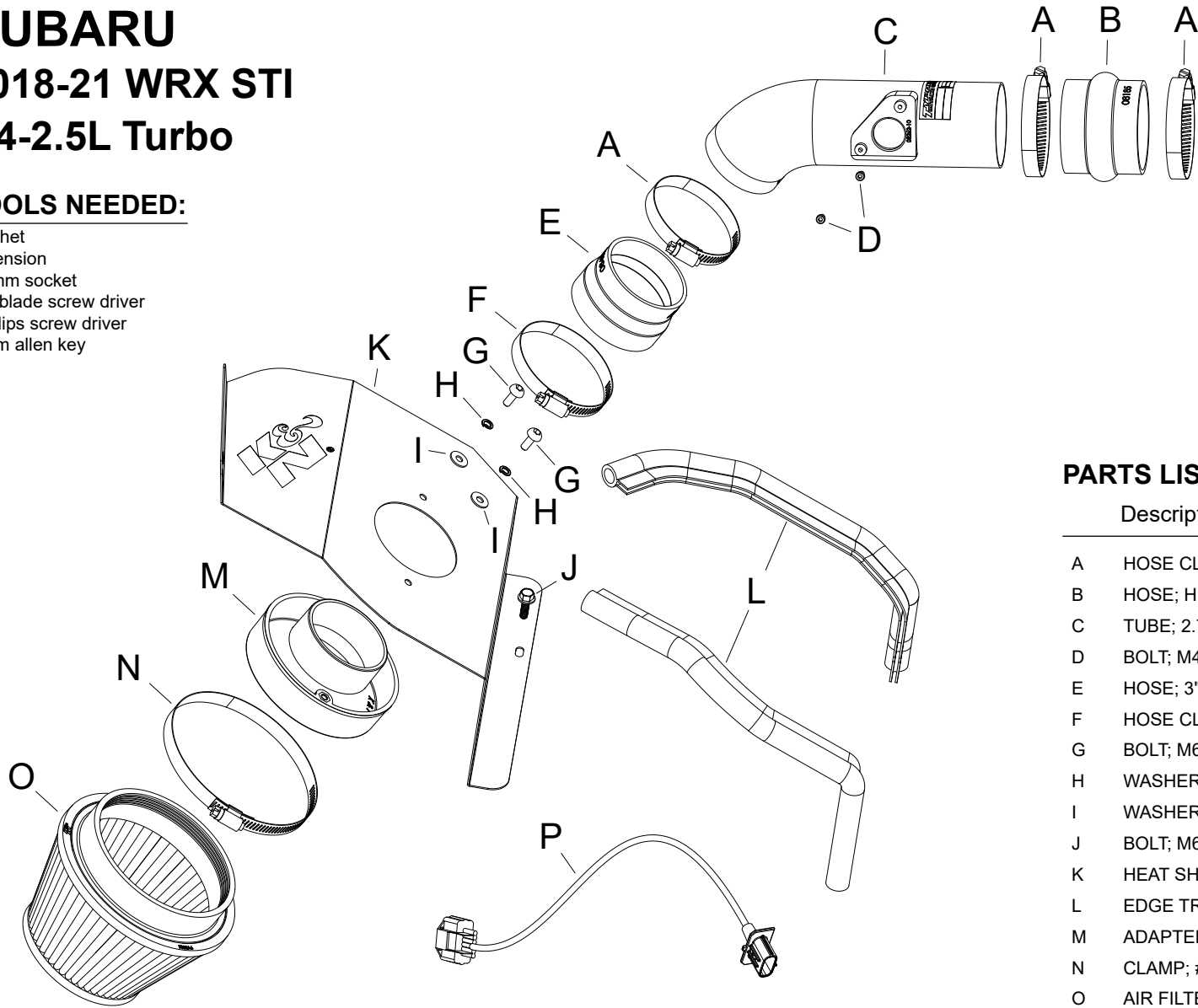


INSTALLATION INSTRUCTIONS

69-8009TWR
SUBARU
2018-21 WRX STI
H4-2.5L Turbo

TOOLS NEEDED:

- ratchet
- extension
- 10mm socket
- flat blade screw driver
- phillips screw driver
- 3mm allen key



PARTS LIST:

Description	Qty.	Part #
A HOSE CLAMP; #44	3	08560
B HOSE; HUMP 2.75"ID X 2.5"L	1	08185
C TUBE; 2.75"OD X 10"L; (AL)	1	25801WR
D BOLT; M4-0.7 X 8MM	2	07733
E HOSE; 3" TO 2.75"ID X 2"L	1	084036
F HOSE CLAMP; #48	1	08601
G BOLT; M6 X 1 X 16MM	2	07730
H WASHER; M6 SPLIT LOCK ZINC	2	1-3025
I WASHER; 6MM FLAT	2	08269
J BOLT; M6-1 X 20	1	1-2038
K HEAT SHIELD	1	073256
L EDGE TRIM; 32"L	1	102493
M ADAPTER; FILTER, 3.00"OD	1	21569
N CLAMP; #88	1	KITHS88
O AIR FILTER	1	RU-5163
P EXTENSION HARNESS; 5 PIN	1	8-197-1

If you need any assistance please call 1-800-858-3333 to speak with a representative in our Customer Service Center before returning the product.

NOTE: FAILURE TO FOLLOW INSTALLATION INSTRUCTIONS AND NOT USING THE PROVIDED HARDWARE MAY DAMAGE THE INTAKE TUBE, THROTTLE BODY AND ENGINE.

TO START:

1. Turn off the ignition and disconnect the negative battery cable.
NOTE: Disconnecting the negative battery cable erases pre-programmed electronic memories. Write down all memory settings before disconnecting the negative battery cable. Some radios will require an anti-theft code to be entered after the battery is reconnected. The anti-theft code is typically supplied with your owner's manual. In the event your vehicles anti-theft code cannot be recovered, contact an authorized dealership to obtain your vehicles anti-theft code.



2. Remove the two plastic retaining clips that secure the fresh air duct and then remove the fresh air duct from the vehicle.



3. Disconnect the mass air sensor electrical connection and unclip the wiring harness from the air filter housing.



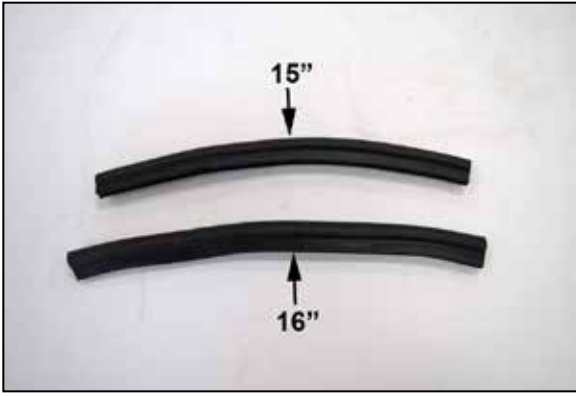
4. Loosen the hose clamp that secures the intake hose to the turbo inlet. Release the air filter housing clam shell clips and then remove the air filter clean side housing, intake hose and factory air filter from the vehicle.
NOTE: K&N Engineering, Inc., recommends that customers do not discard factory air intake.



5. Remove the three nuts that secure the air filter housing to the inner fender and then remove the bracket from the vehicle.



6. Remove the bolt that secures the dirty side air filter housing to the frame rail and then remove the air filter housing from the vehicle.



7. Cut the provided edge trim into two sections, one 15" long and one 16" long.



8. Install the edge trim onto the heat shield as shown.



9. Install the K&N® air filter onto the provided filter adapter and secure with the provided hose clamp.



10. Install the filter assembly into the heat shield assembly and secure with the provided hardware.



11. Remove the mass air sensor from the factory air filter housing and install it into the K&N® intake tube using the provided hardware.



12. Install the provided hose coupler (084036) onto the intake tube. Do not completely tighten the hose clamp at this time.



13. Install the provided hump coupler (08185) onto the turbo inlet tube. Set the heat shield assembly into position on the inner fender but do not secure.



14. Install the K&N® intake tube into the coupler at the turbo inlet tube and align with the filter adapter, slide the coupler onto the filter adapter, adjust the tube for best fit and secure with the hose clamps. Secure the heat shield with the provided hardware.



15. Reconnect the mass air sensor electrical connection.

NOTE: Due to varying manufacturer tolerances, it may be necessary to use the provided extension harness.



16. Reconnect the vehicle's negative battery cable. Double check to make sure everything is tight and properly positioned before starting the vehicle.

17. It will be necessary for all K&N® high flow intake systems to be checked periodically for realignment, clearance and tightening of all connections. Failure to follow the above instructions or proper maintenance may void warranty.

ROAD TESTING:

1. Start the engine with the transmission in neutral or park, and the parking brake engaged. Listen for air leaks or odd noises. For air leaks secure hoses and connections. For odd noises, find cause and repair before proceeding. This kit will function identically to the factory system except for being louder and much more responsive.

2. Test drive the vehicle. Listen for odd noises or rattles and fix as necessary.

3. If road test is fine, you can now enjoy the added power and performance from your kit.

4. K&N Engineering, Inc., requires cleaning the intake system's air filter element every 100,000 miles. When used in dusty or off-road environments, our filters will require cleaning more often. We recommend that you visually inspect your filter once every 25,000 miles to determine if the screen is still visible. When the screen is no longer visible some place on the filter element, it is time to clean it. To clean and re-oil, purchase our filter Recharger® service kit, part number 99-5050 or 99-5000 and follow the easy instructions.

NOT LEGAL FOR SALE OR USE ON ANY POLLUTION CONTROLLED MOTOR VEHICLE IN CALIFORNIA OR STATES ADOPTING CALIFORNIA EMISSION PROCEDURES.

See knfilters.com for CARB status on each part for a specific vehicle