

Level of Difficulty

Easy

This is the first of two manuals required to complete this installation. The second manual is included with your side steps / running boards.

Parts List

1	Driver / left running board *
1	Passenger / right running board *
8	Mounting bracket, universal
1	W2W Frame bracket, driver side
1	W2W Frame bracket, passenger side
2	Mounting bracket, spring mount
16	Washer, M8
16	Lock washer, M8
16	Hex bolt, M8 – 1.25 x 30mm
6	T-bolt, 7/16"
6	Washer, 7/16"
6	Lock washer, 7/16"
6	Nut, 7/16"
6	Plastic T-bolt retainer
2	J-bolt, 3/8"
4	Washer, 3/8"
4	Lock washer, 3/8"
4	Nut, 3/8"

* Running boards sold separately

Tools Required

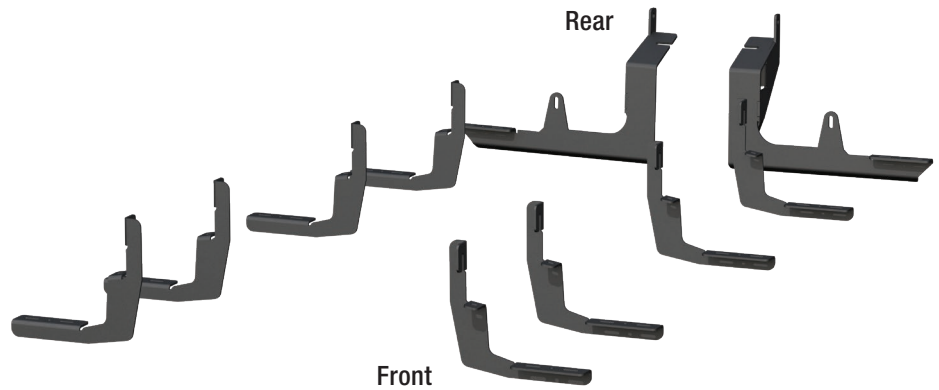
Ratchet	Socket set
Torque wrench	End wrench

Torque Specifications

M8 bolt	19 ft-lbs.
3/8" bolt	35 ft-lbs.
7/16" bolt	55 ft-lbs.

Use above torque setting unless otherwise noted

Product Photo



NOTICE

Before you begin installation, read all instructions thoroughly.

Proper tools will improve the quality of installation and reduce the time required.

To help prevent damage to the product or vehicle, refer to the specified torque specifications when securing hardware during the installation process.

Maintenance

To protect the product, wax after installing. Regular waxing is recommended to add a protective layer over the finish. Do not use any type of polish or wax that may contain abrasives that could damage the finish.

For polished, gloss and other smooth finishes, polish may be used to clear small scratches and scuffs on the finish.

Mild automotive detergent may be used to clean the product. Do not use dish detergent, abrasive cleaners, abrasive pads, wire brushes or other similar products that may damage the finish.

Product Registration and Warranty

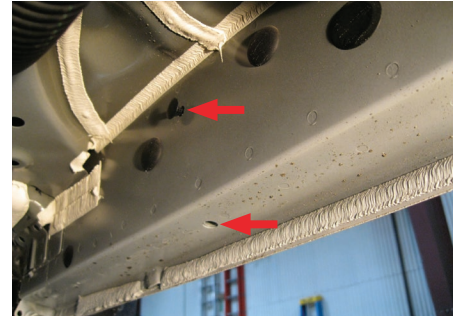
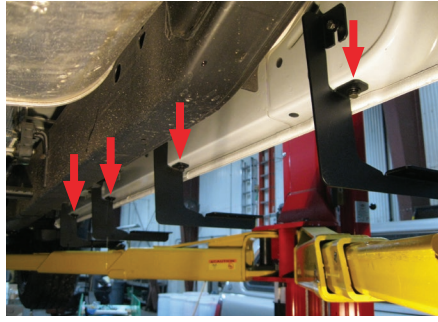
CURT Group stands behind our products with industry-leading warranties.

Provide feedback and help us to improve our products by registering your purchase at: warranty.curtgroup.com/surveys

Step 1

Starting on the driver side, locate the four mounting locations along the bottom edge of the vehicle.

Remove any factory thread plugs.

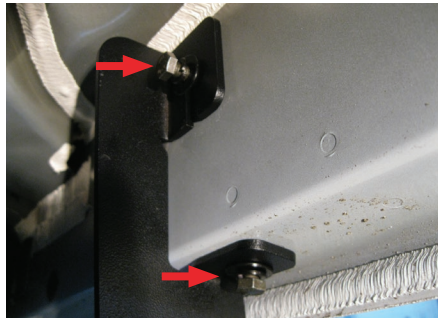


Step 2

Attach a mounting bracket at each location using an M8 flat washer, lock washer and hex bolt.

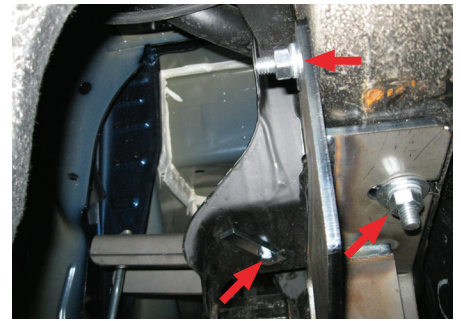
Snug the hardware, but do not fully tighten.

Note: Apply anti-seize to the hex bolts to prevent them from locking up.



Step 3

Insert the T-bolts into the holes in the outer frame, bottom of the frame and upper leaf spring mount locations using the plastic retainer to maintain position.



Step 4

Taking care not to knock the T-bolts out of place, secure the driver-side frame bracket using a 7/16" flat washer, lock washer and hex bolt.

Snug the hardware, but do not fully tighten.



Step 5

Taking care not to knock the T-bolt out of place, secure the spring mount bracket using a 7/16" flat washer, lock washer and hex bolt.

Tighten the hardware to the torque specifications listed on page one.

Note: Secure the spring mount bracket with the folded edge down.

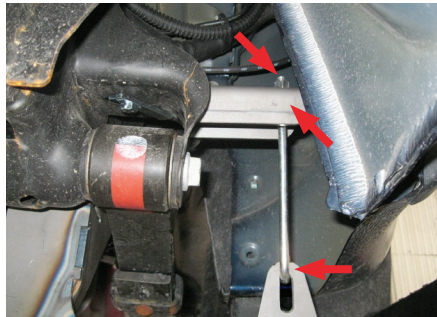


Step 6

Secure the spring mount bracket to the frame bracket using a 3/8" J-bolt, washer, lock washer and nut.

Snug the hardware, but do not fully tighten.

Note: After installation, adjust the J-bolt hardware to support the frame bracket.



Step 7

Repeat steps 1 - 6 for the passenger side.

Note: To complete the installation, refer to the manual included with your running boards / side steps.