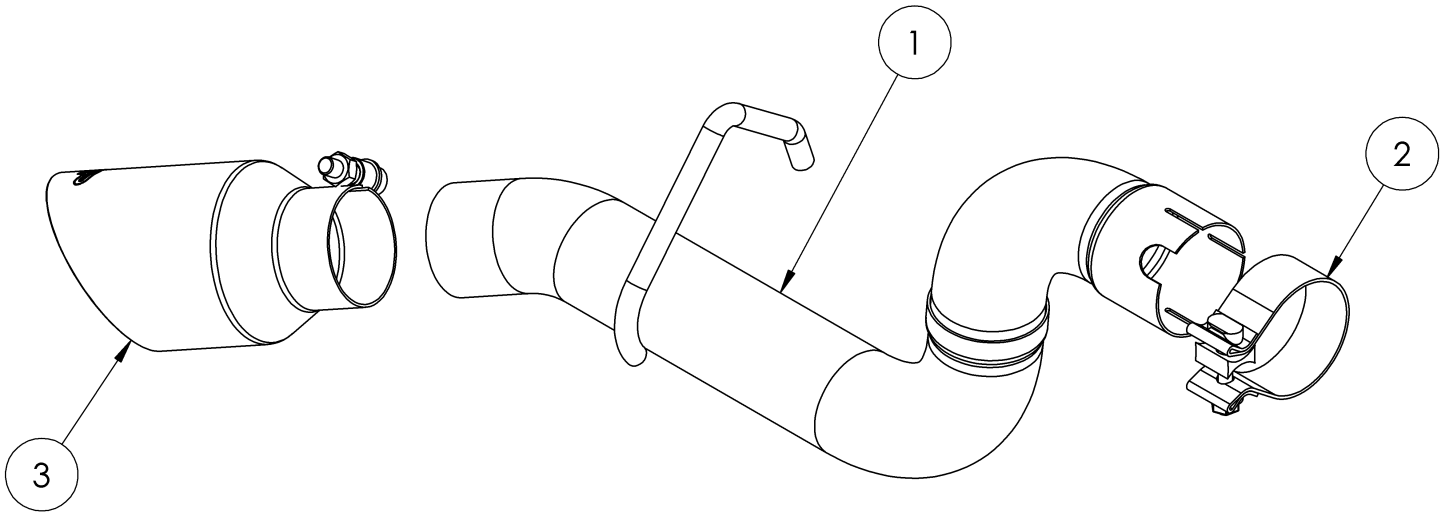


S5539

2018 & UP JEEP WRANGLER (JL),
4-DR/2-DR, 3.6L, AXLE BACK,
2.5" TURN DOWN EXIT WITH TIP

MBRP®



ITEM	DESCRIPTION	QTY
1	MUFFLER BYPASS	1
2	2.5" CLAMP	1
3	TIP	1

Refer to this LOT NUMBER when contacting customer service: _____

PLEASE READ BEFORE STARTING INSTALLATION

While MBRP has made every effort to ensure that all components of this system are of superior quality and properly packaged, it is the installer's responsibility to ensure the following before removal of the factory exhaust:

- that ALL components shown above are present.
- that ALL mating components fit together.
- that there are no damaged components.
- that the system you have purchased is appropriate for your vehicle year, model and configuration.
- that the system will not interfere with any modifications previously installed or planned.
- that you have read and understand these instructions.

If you have any questions or are uncertain about any aspect of the installation of this system to your vehicle please contact your dealer before commencing installation.

MBRP

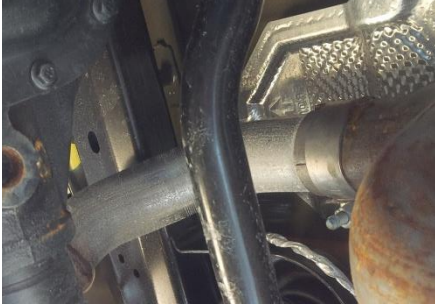


Figure 1



Figure 2



Figure 3



Figure 4

Removal of Stock System

1. Apply a penetrating lubricant liberally to all exhaust fasteners, hangers and rubber insulators.

2. Start to remove the exhaust by loosening the clamp above the rear axle, before the muffler on the driver's side.

Refer to Figure 1.

3. The muffler can be removed by removing the hangers from the rubber isolators; one on each side.

Refer to Figure 2.

Installation of MBRP Performance Exhaust

1. Remove the rear rubber isolator from the driver-side of the vehicle and place it onto the hanger of the **Muffler Bypass**.

2. Slide a 2 ½" **Clamp** over the **Muffler Bypass** and then loosely install it to the over-axle pipe. Attach the rubber isolator on the **Muffler Bypass** back onto the vehicle mount.

Refer to Figure 3.

3. Install and adjust the **Exhaust Tip** to suit. Tighten the bolt located on the **Exhaust Tip**.

Refer to Figure 4.

4. Tighten all hardware and clamps, starting at the front and working rearward to secure the system. Check along the full length of the exhaust system to ensure there is adequate clearance for fuel lines, vent lines, brake lines, frame, bodywork, suspension and any wiring, etc. If there is any interference detected, relocate or adjust to provide adequate clearance. Ensure all clamp connections are secure and components are unable to rotate or slide. Band clamps require approximately 45 lb-ft (60 N-m) of torque. Verify clearances, system security and band clamp torque after 30-60 miles (50-100 km) of driving.

Congratulations! You are ready to begin experiencing the improved performance and driving pleasure of your **MBRP** performance exhaust system. We know you will enjoy your purchase.