

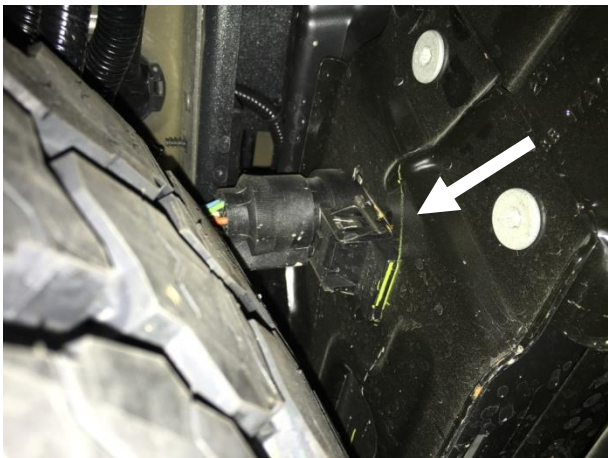
Parts Included:	Qty
RBS-H REAR BUMPER	1
FRAME BRACKETS	2
Hardware	
½" x 1" Hex bolts	4
½" washers	8
½" Nuts	4



REAR BUMPER REMOVAL:

1. If equipped, unplug parking sensors from main harness located on the driver side over the spare tire.

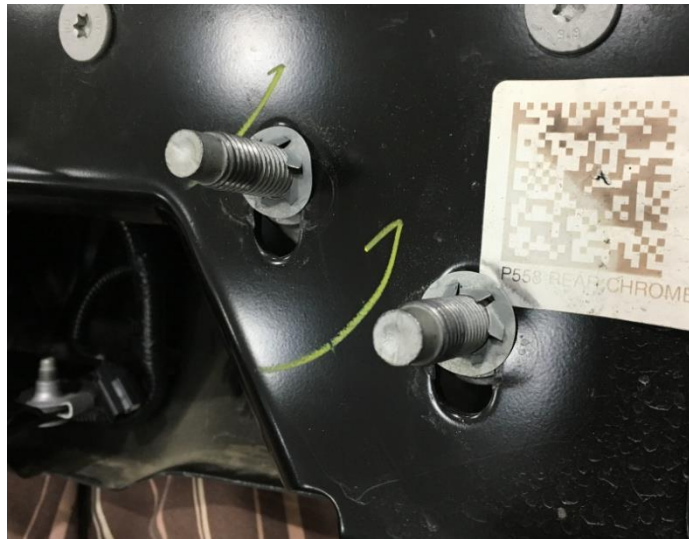
2. Next, unplug the Tow/light plug from its harness.



3. Remove the two bolts that attach the bumper to the receiver hitch.



4. Remove the (x4) Nuts that attach the bumper to the frame brackets and carefully remove the bumper and set aside.

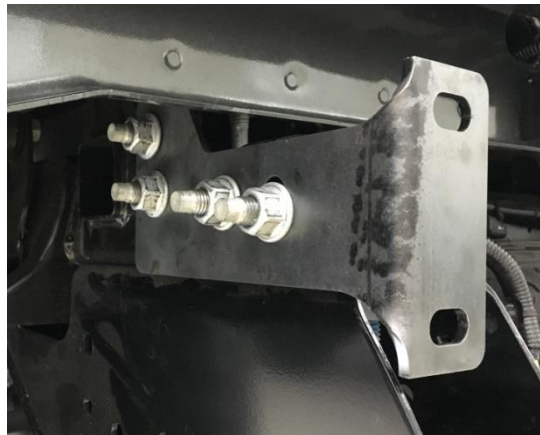


5. Remove the (x4) 21mm nuts that attach the bumper bracket to the frame and set aside. (Both sides) You will need the OE 21mm nuts and jack plate for the RBSH bumper install.

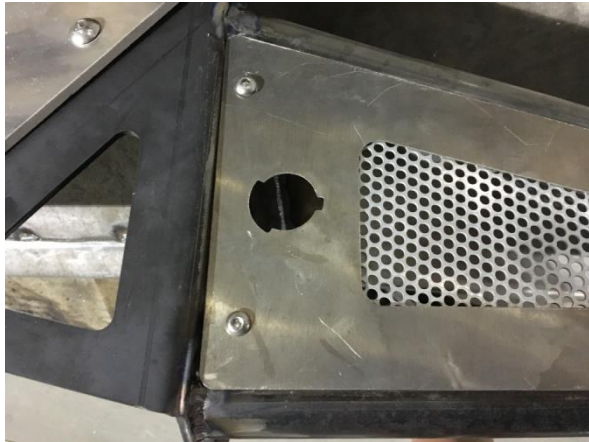


RBSH Bumper Install:

1. Using the OE 21mm nuts and jack plates, install the supplied frame brackets and fully tighten. (Both sides)



2. If equipped, install the plastic sensor housing's in the side panels and skid plate openings and secure. Next, insert the sensors in each housing and secure.



IMPORTANT NOTE: Sensors on bumper were not installed by original equipment manufacturer and therefore may not perform as warranted by the manufacturer. Sensors are intended to assist driver in visualizing areas behind vehicle, but should never be relied upon as the sole means of ensuring safety. Always perform a physical check of all visual areas prior to moving vehicle in reverse.

3. Carefully and with some help, install RBSH bumper to the frame brackets and loosely fasten with the supplied ½" x 1" hex bolts, nuts and washers.



4. Next, carefully lower tailgate and check clearance with the bumper.

5. Once bumper is properly adjusted tighten all hardware.

6. If equipped, plug in sensor plug and trailer/light plug and secure
7. Install license plate. **NOTE: An aftermarket license plate light is recommended.**

