

Parts Included:	Qty
Front Bumper	1
Frame Brackets	2
Hardware: F17RDS-KIT	
½" x 1 ½" Hex Head	6
½" Nuts	6
½" washers	12
3/8" x 1" Hex Head	6
3/8" Nuts	6
3/8" washer	12



Factory Bumper removal:

1. If equipped, unplug parking sensor/Fog Light from main harness.



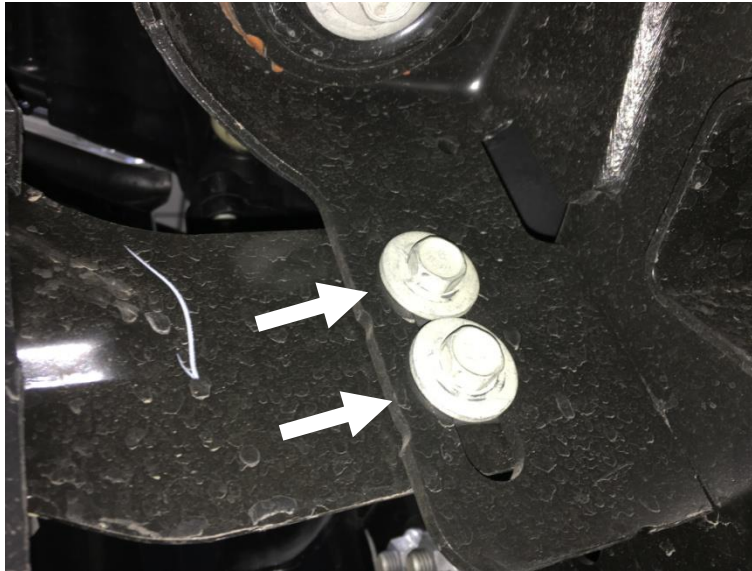
2. If equipped, unplug the block heater plug located on the passenger side inner frame horn. Remove plug from bumper. Plug back together and secure out of the way.



3. Remove the (x4) tow hook bolts and set aside. (Both sides)



4. Remove the (x2) bolts that attach the bumper brace to the frame. (Both sides)



5. With some help, carefully remove the bumper and set aside.

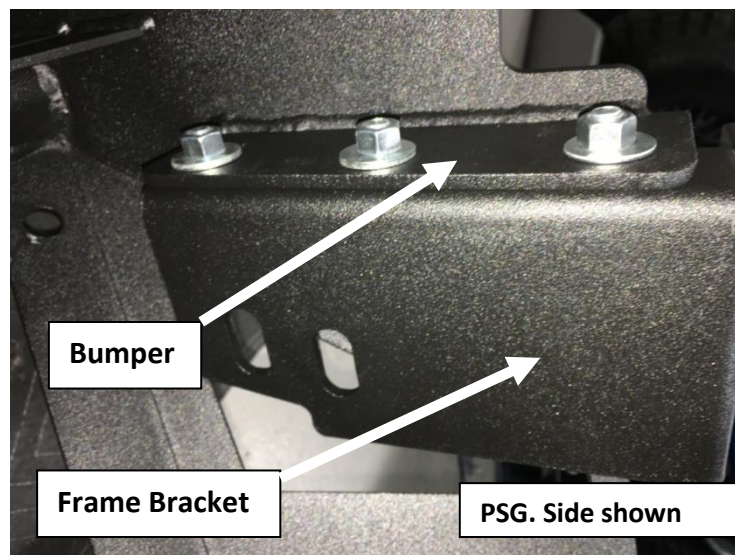


6. Remove the (x2) tow hooks and set aside.



1MRDS Bumper Install:

1. Remove skid plate from RDS Bumper and set aside.
2. Install the (x2) bumper bracket to the RDS bumper using the supplied 3/8" x 1" Hex bolts, nuts and washer and loosely tighten.





PART NUMBER: **F171MRDS**
PRODUCT: **MRDS FRONT BUMPER**

APPLICATION: **2017-C**
FORD F250/F350

2. Carefully and with some help, install RDS bumper to the frame and loosely fasten with the supplied 1/2" x 1 1/2" Hex head bolts nuts and washers.
3. After bumper is properly aligned, fully tighten all hardware.
4. Re-install skid plate and secure.
5. Your install is now complete.

