



n-fab.com

nfabinc   

I-SHEET NUMBER: INST- 00262
 PART NUMBER: HPC0780CC
 PRODUCT: PODIUM HOOP STEP
 APPLICATION: 07-13 CHEVY/GM CC

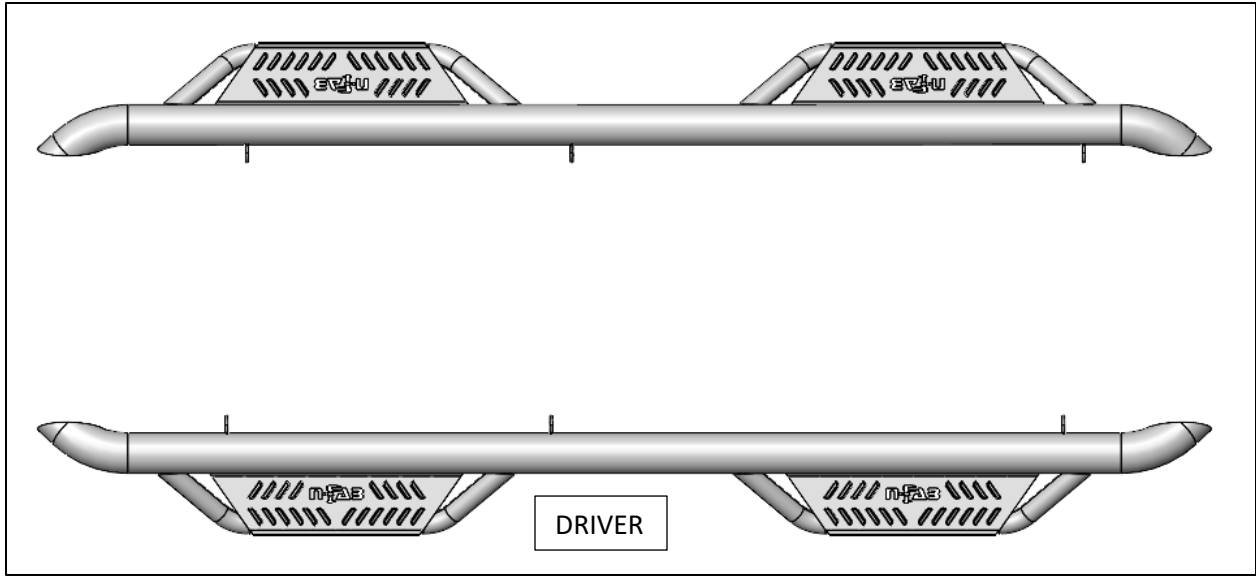
HARDWARE DESCRIPTION	QTY.
HWKT-00424X	1
M8 BLACK BUTTON HEAD BOLT	6
M8 BLACK WASHER	6
M8 BLACK HEX BOLT	6
M8 WASHER	12
M8 NYLOC NUT	6
M8 U-NUT	6
M8 LOCK WASHER	
M10X25mm Carriage bolt	12
M10 hex nut	12

PARTS INCLUDED	QTY
DRIVER SIDE	1
PASSENGER SIDE	1
MOUNTING BRACKET	6



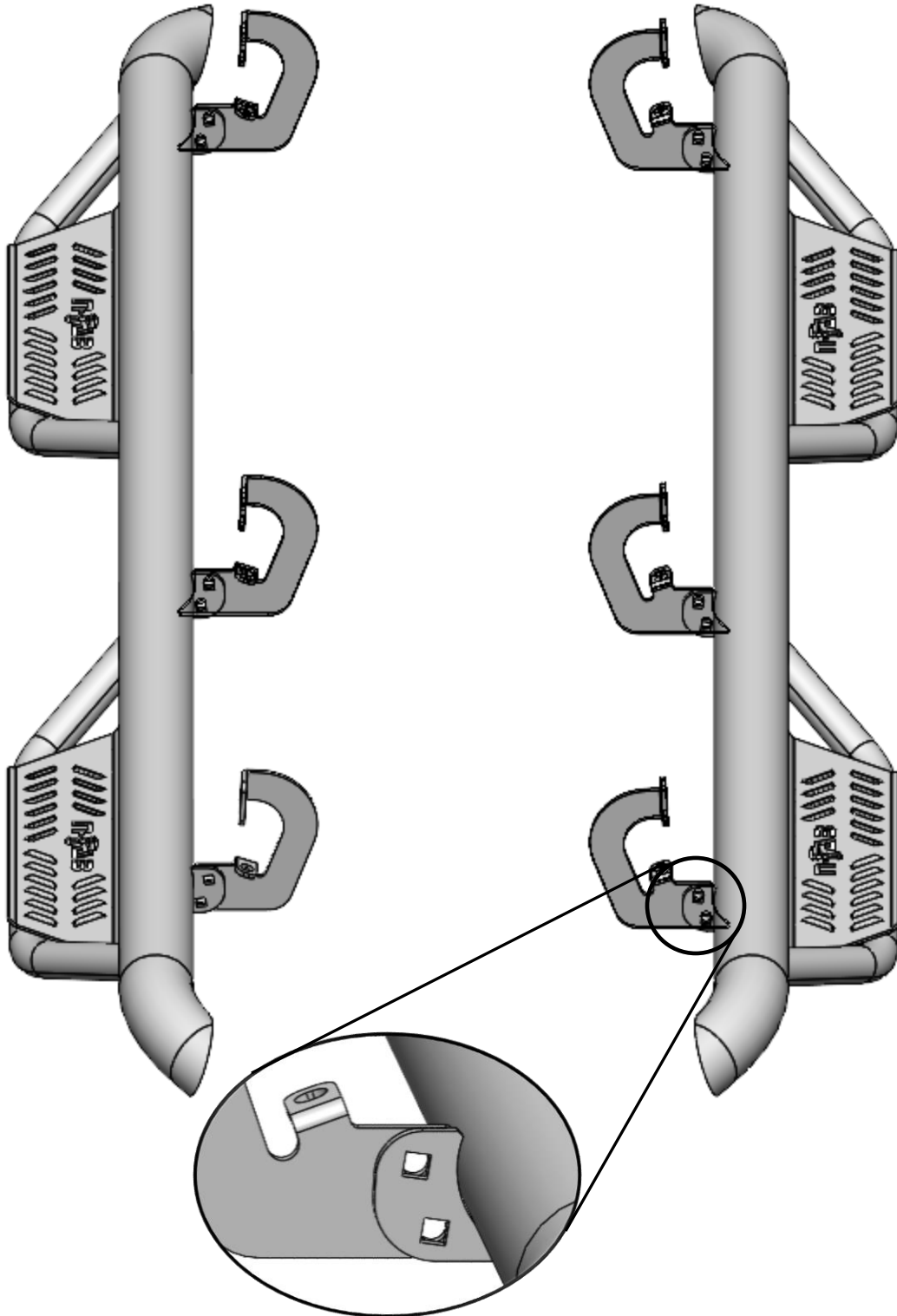
DO NOT USE IMPACT TOOLS

Step 1: Identify Driver side step



Step 2: Install the (x6) mounting brackets to each attachment point on the main tube using the supplied M10x25 carriage bolts, M10 hex nuts and leave loose for now.

***** NOTE: The brackets will attach to the backside of the mounting flange with the threaded end of the carriage bolt facing towards the REAR of the step. *****





n-fab.com

nfabinc   

I-SHEET NUMBER: INST- 00262
PART NUMBER: HPC0780CC
PRODUCT: PODIUM HOOP STEP
APPLICATION: 07-13 CHEVY/GM CC

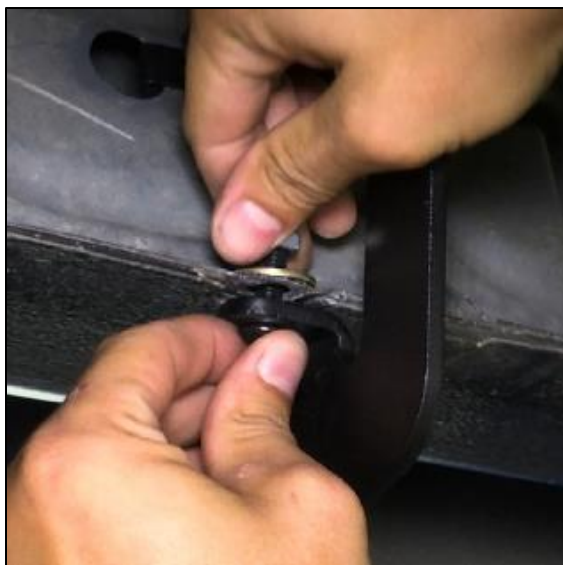
Step 3: Insert M8 threaded U-nut into the body of the vehicle. Install only one at the rear of the vehicle on 1500 models.



Step 4: Carefully place step into place. Use bolt, washer and begin hand tightening all three upper mounts. An assistant recommended with this step.



Step 5: Insert button head bolt and washer through pinch weld hole and secure with nyloc nut and washer. **NOTE* some 1500 models have a welded nut at the pinch weld.*



Step 6: Tighten pinch weld mounts first then upper bolts. Tighten to 20 ft./lbs. torque to secure the steps to vehicle.



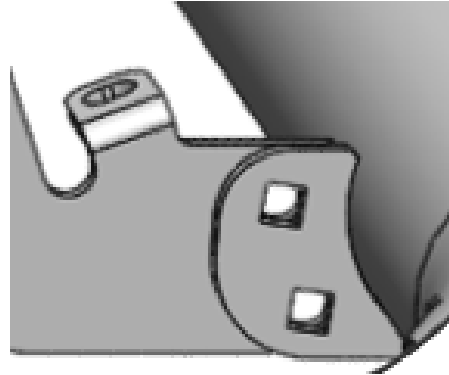


n-fab.com

nfabinc   

I-SHEET NUMBER: INST- 00262
PART NUMBER: HPC0780CC
PRODUCT: PODIUM HOOP STEP
APPLICATION: 07-13 CHEVY/GM CC

Step 7: After final adjustment, tighten all three brackets at the main tube.



Step 8: Repeat steps 2-7 with passenger side. Your install is now complete.