

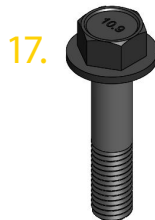
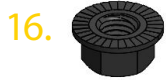
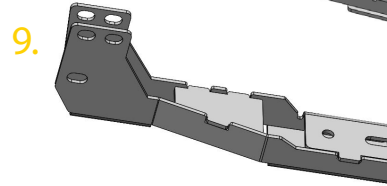
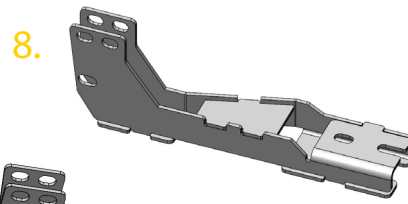
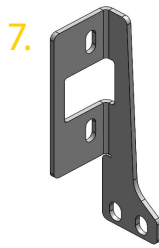
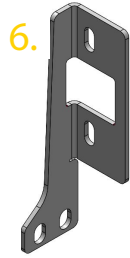
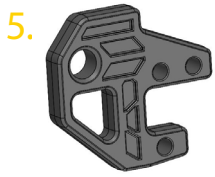
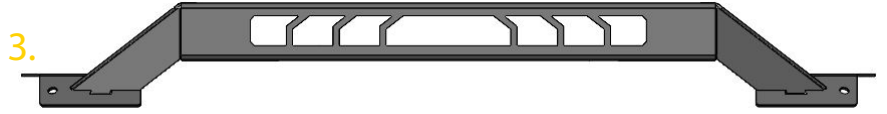
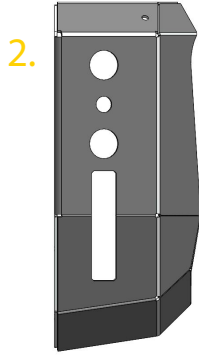
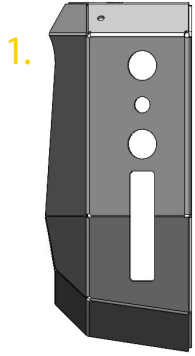


DESERT BORN, ROAD READY.™

PART# T14BB01-TX  
14-21 TUNDRA

HVM BULL BAR  
INST-02414

## Components and Hardware: HWKT-13665X





DESERT BORN, ROAD READY.™

PART# T14BB01-TX  
14-21 TUNDRA

HVM BULL BAR  
INST-02414

## Components and Hardware:

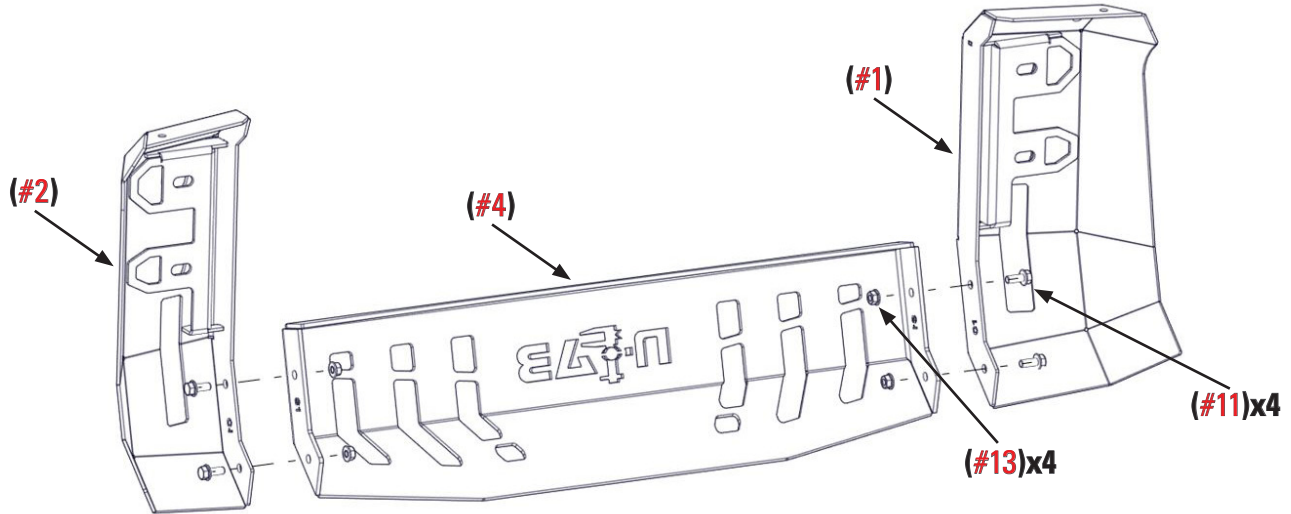
- 1. Passenger side up-right.....(1)
- 2. Driver side up-right.....(1)
- 3. Light hoop.....(1)
- 4. Skid plate.....(1)
- 5. Towhook.....(2)
- 6. Driver Vertical mounting plate.....(1)
- 7. Passenger Vertical mounting plate.....(1)
- 8. Driver side frame bracket.....(1)
- 9. Passenger side frame bracket.....(1)
- 10. M12-1.75x25mm flanged hex bolt.....(4)
- 11. M8-1.25x20mm flanged hex bolt.....(4)
- 12. M8-1.25x20mm button head bolt.....(4)
- 13. M8-1.25 serrated flange hex nut.....(8)
- 14. M8 flat washer.....(4)
- 15. M12-1.25x40mm flanged hex bolt.....(4)
- 16. M12-1.75 serrated hex nut.....(10)
- 17. M12-1.75X55mm flanged hex bolt.....(6)
- 18. Plug-1.75" tube plug.....(4)

## Tools for Installation:

- Socket wrench
- 13mm socket
- 17mm socket
- 19mm socket
- 5.0 hex socket
- 13mm wrench
- 19mm wrench

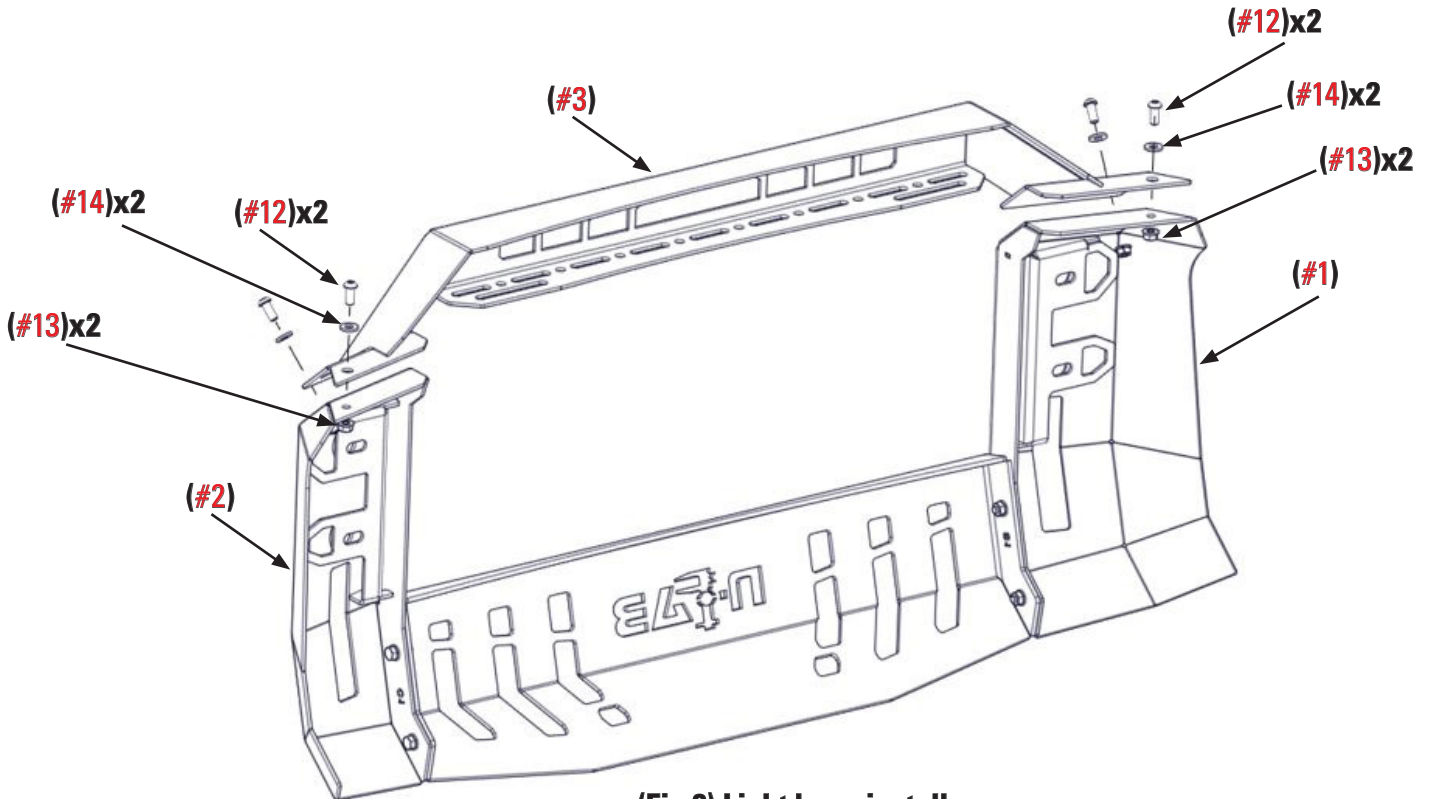
# INSTALL

Step 1. Assemble (#2) driver side and (#1) passenger side up-rights to (#4) skid plate using (#11)x4 M8-1.25x20mm flanged hex bolt, (#13)x4 M8-1.2 serrated flange hex nut and loosely tighten. **(Fig 1)**



**(Fig 1) Skid plate install**

Step 2. Assemble (#3) light hoop to (#2) and (#1) uprights using (#12)x4 M8x20mm button head bolt, (#14)x4 M8 washer and (#13) x4 M8-1.25 serrated flanged hex nut. **(Fig 2)**

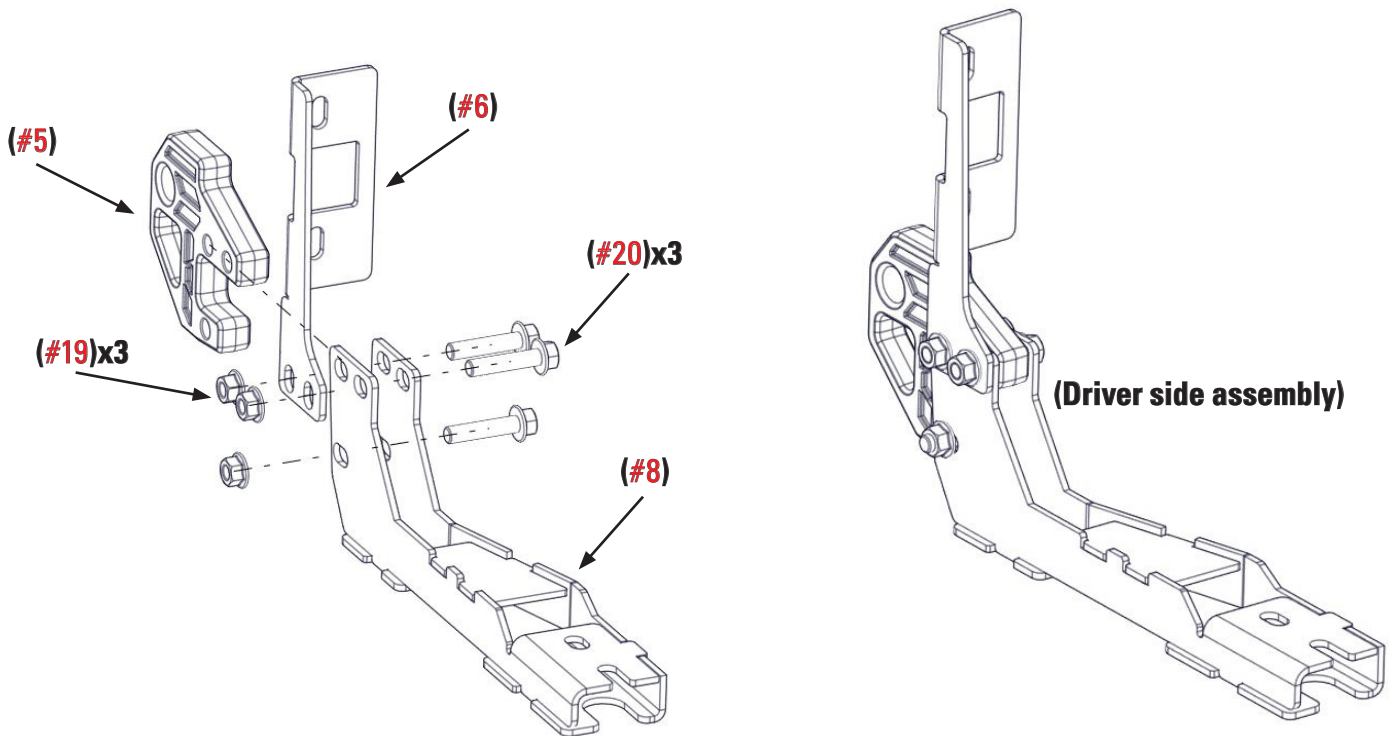


**(Fig 2) Light hoop install**

**INSTALL**

Step 3. Remove factory tow hooks if equipped. Begin by removing (x2) M12 factory bolts from driver and passenger side tow hooks; remove and discard.

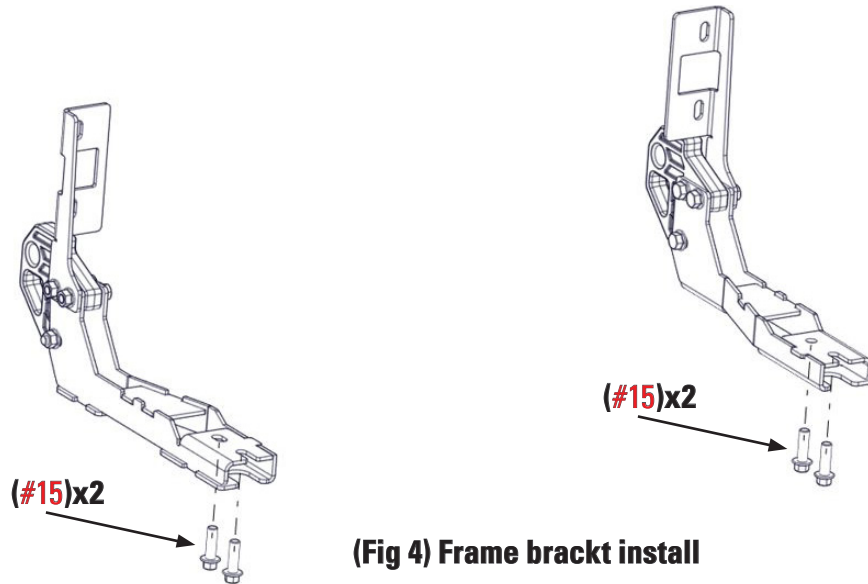
Step 4. Attach (#5) tow hook, (#6) vertical mounting bracket, and (#8) driver side frame bracket with (#20)x6 M12x55mm flanged hex bolt and (#19)x3 flanged hex nut to make an assembly. Use (#5),(#7), and (#9) for passenger side assembly. Tighten all hardware to (50-60 ft/lbs) of torque. **(Fig 3)**



**(Fig 3) Tow hook  
and mounting bracket assembly**

## INSTALL

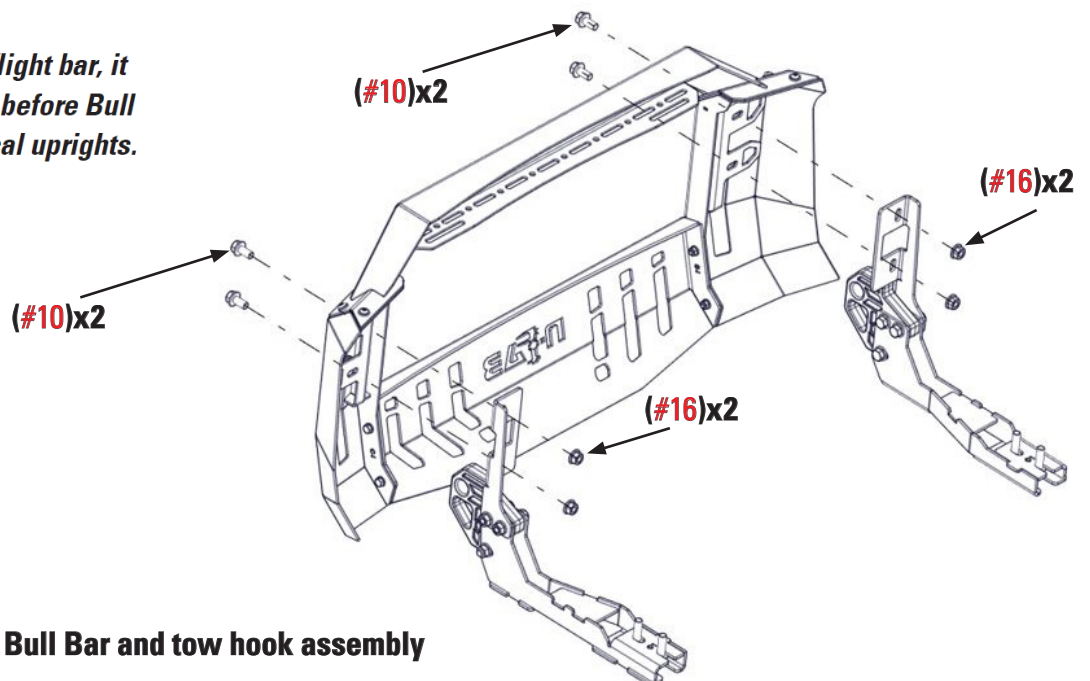
Step 5. Attach driver and passenger side bracket assembly to factory tow hook mounts using (#15)x4 M12-1.25x40mm flanged hex bolt. Tighten hardware to (55-60 ft/lb). You may need to adjust for final install. **(Fig 4)**



Step 6. It is recommended to apply painters tape to tow hooks and also to bumper, where Bull Bar may come into contact. This will eliminate any damage while aligning Bull Bar.

Step 7. Use the supplied (#10)x4 M12-1.75x25mm flanged hex bolt and (#16)x4 M12-1.75 Flanged serrated hex nut and carefully attach Bull Bar to vertical uprights so tow hooks protrude through the rectangular cut outs. Make adjustments needed to frame mounts to ensure assembly is centered on vehicle. Tighten to (55-60 ft/lbs). **(Fig 5)**

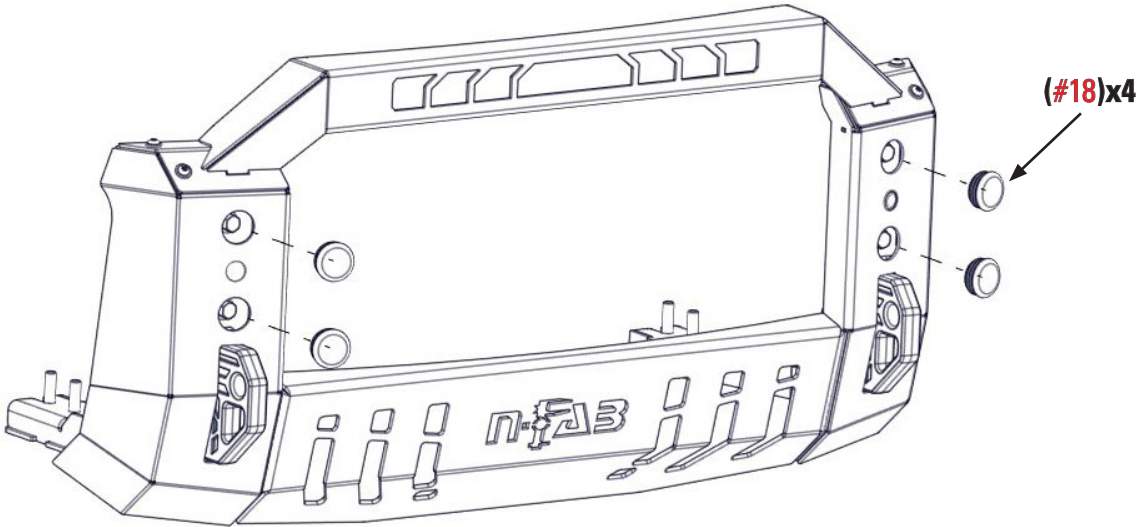
*Note: If you have lights/light bar, it is recommend to install before Bull Bar is attached to vertical uprights.*



# INSTALL

Step 8. Insert (#18)x4 tube plugs in the Bull Bar facia to cover hardware. **(Fig 6)**

Step 9. Use a drive way or parking lot to ensure sensors are working properly.



**(Fig 6) Hardware cap cover install**