

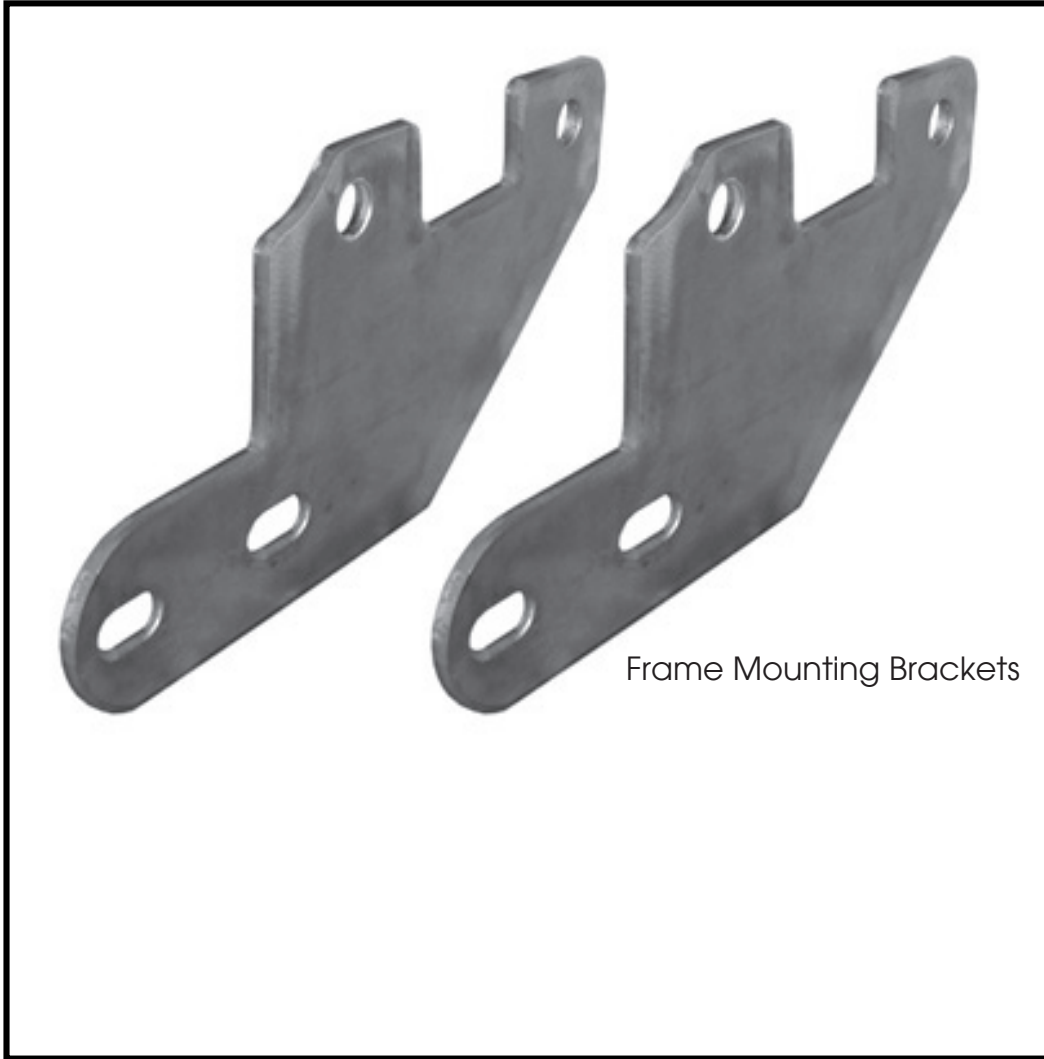


OMIX-ADA, Inc.

460 HORIZON DR. SUITE 100 | SUWANEE, GA 30024 | PHONE: 770-614-6101 | FAX: 770-614-6069 | info@omix-ada.com

Part #11513.03

'11-14 Grand Cherokee Double Tube Rear Bumper Guard



Components

- | | |
|-------------------------------------|-----|
| 1. Rear Bumper Guard | (1) |
| 2. Frame Mounting Brackets | (2) |
| 3. 12-1.75mm x 35mm Hex Bolts | (4) |
| 4. 12mm x 24mm x 2.5mm Flat Washers | (8) |
| 5. 12mm Lock Washers | (4) |
| 6. 12mm Hex Nuts | (4) |

OMIX-ADA® TECHNICAL SUPPORT

PHONE: M-F 8am - 5pm EST 1-800-449-6649 | EMAIL: techsupport@omix-ada.com

FOR WARRANTY INFORMATION VISIT: www.Omix-Ada.com



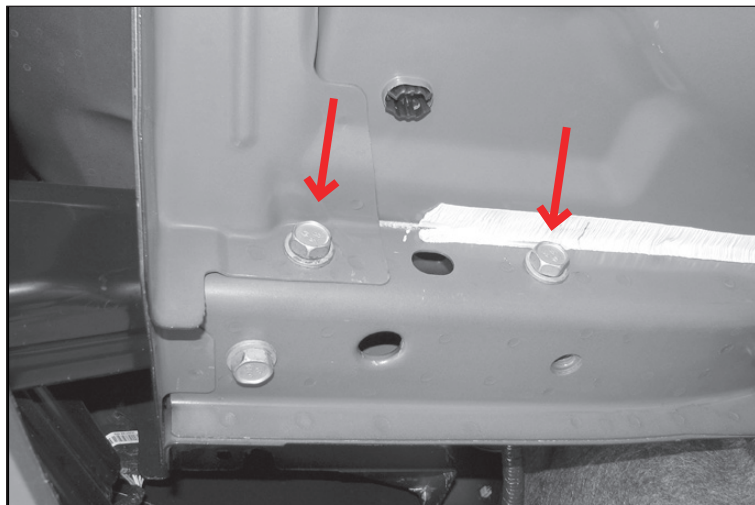
OMIX-ADA, Inc.

460 HORIZON DR. SUITE 100 | SUWANEE, GA 30024 | PHONE: 770-614-6101 | FAX: 770-614-6069 | info@omix-ada.com

'11-14 Grand Cherokee Double Tube Rear Bumper Guard

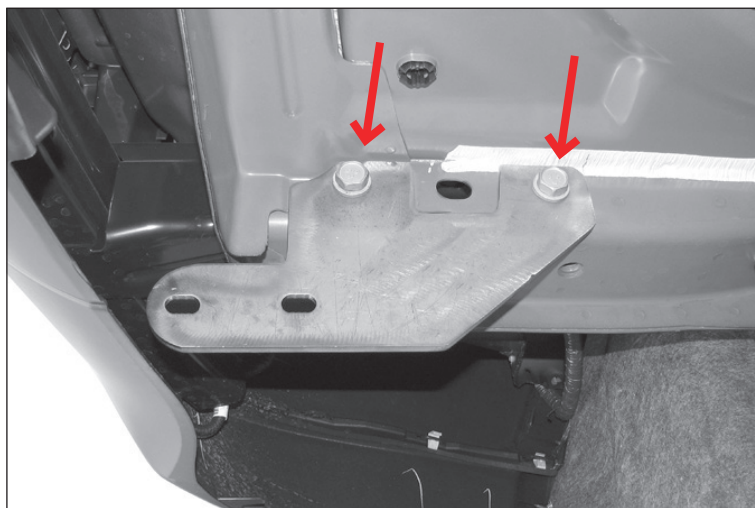
Remove contents from box. Verify all parts are present. Read instructions carefully before starting installation. Assistance is highly recommended. Allow time for muffler to cool completely before installing.

1. Starting on the driver side of the vehicle, locate threaded holes in left side upper frame rail and remove factory hex bolts.

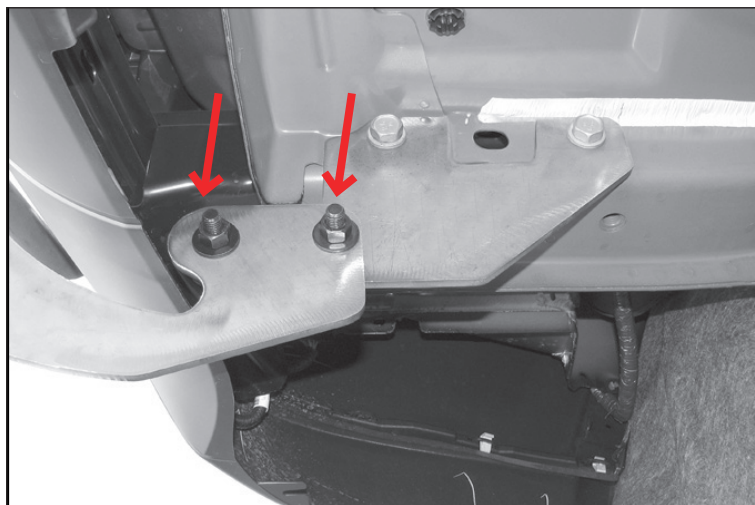


2. Bolt the Frame Mounting Bracket to frame rail with the factory 14mm hex bolts, (Figure 2). Do not fully tighten. Repeat for passenger side.

NOTICE It may be necessary to remove excess sealant from body seam to provide additional clearance for Mounting Bracket.



3. Carefully position Rear Bumper Guard to inside of Mounting Brackets. Bolt Rear Bumper Guard to Brackets using 12mm x 35mm Hex Bolts, 12mm Flat Washers, 12mm Lock Washers, and 12mm Hex Nuts. Do not tighten hardware at this time.



**Rugged
Ridge**

OMIX-ADA, Inc.



460 HORIZON DR. SUITE 100 | SUWANEE, GA 30024 | PHONE: 770-614-6101 | FAX: 770-614-6069 | info@omix-ada.com

'11-14 Grand Cherokee Double Tube Rear Bumper Guard

4. Align Rear Bumper Guard and tighten all hardware.
5. Do periodic inspections of installation to ensure all hardware is secure and tight.



To protect your investment, wax this product after installing. Regular waxing is recommended to add a protective layer over the finish. Do not use any type of polish or wax that may contain abrasives that could damage the finish.

For stainless steel: Aluminum polish may be used to polish small scratches and scuffs on the finish. Mild soap may be used also to clean the Bumper Guard.

For gloss black finishes: Mild soap may be used to clean Bumper Guard.