

ROUGH COUNTRY

SUSPENSION SYSTEMS®



WARNING: This product contains a chemical known to the State of California to cause Cancer and Reproductive Harm. For more information, go to www.P65Warnings.ca.gov.

1999-2006 CHEVY SILVERADO 2WD/4WD
1999-2006 GMC SIERRA 1500 2WD/4WD
REAR WHEEL WELL LINER

PLEASE READ INSTRUCTIONS CAREFULLY BEFORE STARTING THE INSTALLATION.

NOTE: FOR EASIER INSTALLATION, REMOVE THE TIRE.

INCLUDED IN HARDWARE KIT:

1.



Driver Side & Passenger
Side Liner
1 pr

2.



Plastic Retainer
18 pcs

TOOLS NEEDED:

13mm Socket or T40 Torx Bit
 Plastic Pry Tool
 Gloves
 1/4" Drill

PREPARATIONS:

Please clean the interior panels of the rear wheel well prior to installation.

If vehicle comes equipped with factory wheel well liners, these will need to be removed, along with any fasteners involved.

If aftermarket components have been installed within the wheel well, you may need to notch portions of the liner to fit.

REAR WHEEL WELL LINER INSTALLATION

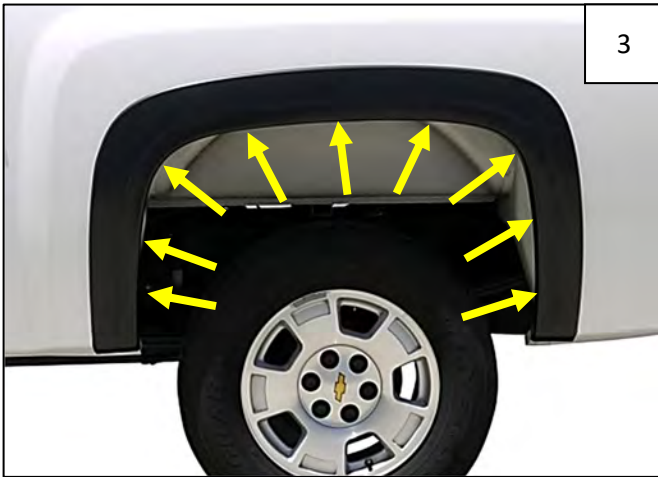


If you have aftermarket wheel well components, such as a rear air spring kit, first cut the wheel well liner in the area that will interfere.



Using a 13mm socket or T40 Torx bit, depending on model, remove 2 factory fasteners within wheel well. Retain these fasteners for future use.

NOTE: Factory liner must be removed prior to installation.



If your vehicle is equipped with factory fender flares, remove and discard 9 push pins that keep the flare in place. Remove flare and save for reinstallation.

If you do not have factory flares, skip to Step 4.

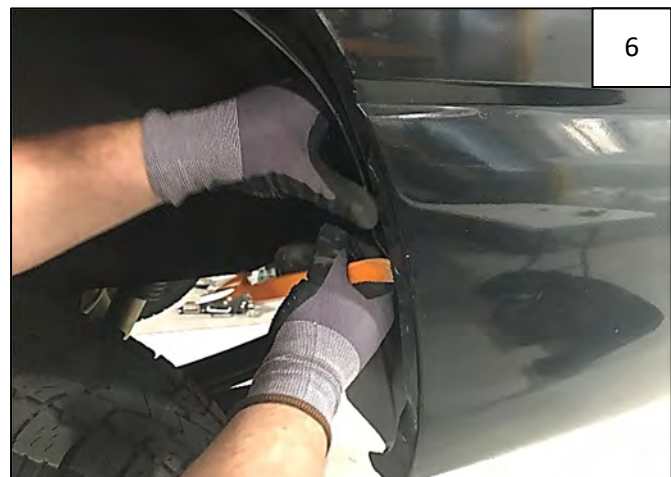


Slide the Rear Wheel Well Liner behind wheel at rear of vehicle. It is helpful to tilt the liner at a 45-degree angle at front of wheel and then straighten it out once it's behind the wheel.



Tuck Rear Wheel Well Liner under metal fender lip at all outward facing edges.

NOTE: Use gloves to protect your hands.



Use a plastic pry tool to assist in tucking the wheel well liner in place.



7

Reinstall factory fasteners removed in Step 2, making sure each fastener is threaded into the support strut.



8

If you removed the factory fender flares, drill a 1/4" hole through holes in sheet metal and into wheel well liner (5 locations).

If you do not have factory flares, skip to Step 10.



9

Hold factory flare in place on fender. Insert a supplied Plastic Retainer through flare and into each hole drilled in Step 3. Proceed through Steps 10-13.



10

While holding liner in place at inside of sheet metal, insert a supplied Plastic Retainer through factory hole in sheet metal and into predrilled hole in liner.



11

Lower Hole locations.



12

Install a supplied Plastic Retainer through upper holes in fender lip and into holes in wheel well liner at locations indicated by arrows.

13



Installation is complete. Repeat for other side.