



2024 - UP Tacoma Front Shackle Mount

Thank you for choosing Rough Country for all of your suspension needs.

Rough Country recommends that a certified technician install this system. In addition to these instructions, professional knowledge of disassemble/reassembly procedures as well as post installation checks must be known. Attempts to install this system without this knowledge and expertise may jeopardize the integrity and/or operating safety of the vehicle. Please read all the instructions before beginning the installation. Check the kit hardware against the "Kit Contents" list below. If question exist, please call us @1-800-222-7023. We will be happy to answer any questions concerning this product. Check all fasteners for proper torque. Check to ensure for adequate clearance between all components. Check and retighten wheels at 50 miles and again at 500 miles. Periodically check all hardware for tightness. Be sure you have all the needed parts and understand where they go. Also, please review the "Tools Needed" list to be certain you have the necessary tools to complete the installation.

NOTICE TO DEALER AND VEHICLE OWNER

⚠ WARNING Any vehicle equipped with any Rough country product must have the "Warning to Driver" decal installed on the sun visor or dash. The decal is to act as a constant reminder for whoever is operating the vehicle of its unique handling characteristics. **INSTALLING DEALER**—It is your responsibility to install the warning decal and to forward these installation instructions on too the vehicle owner for review and to be kept in the vehicle for its service life.



2024 - UP Tacoma Front Shackle Mount

TOOLS NEEDED:
Metric Wrench/Socket
10mm
12mm
17mm
19mm

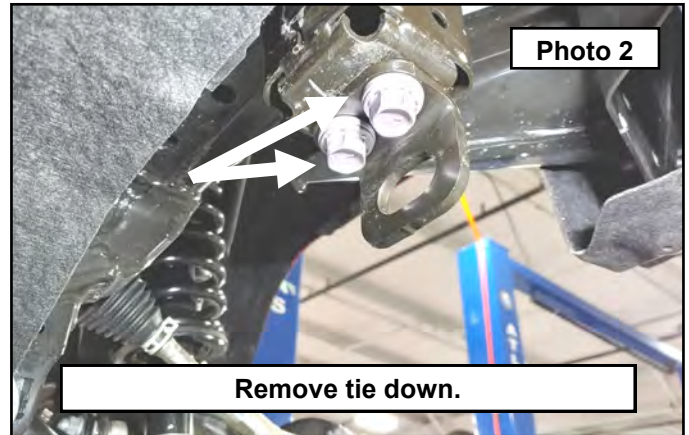
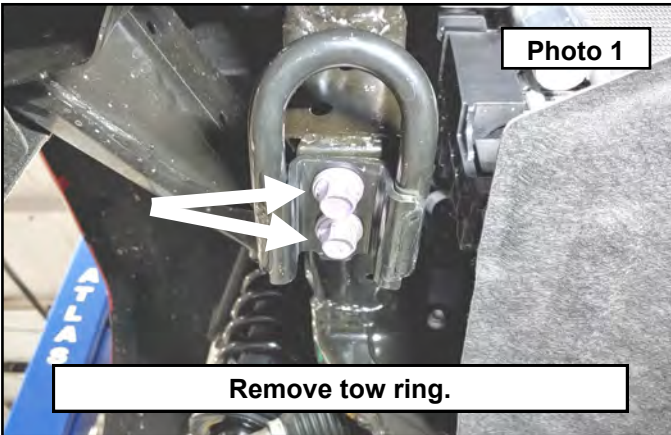
KIT CONTENTS:
Driver Shackle Bracket
Pass Shackle Bracket

HARDWARE INCLUDED:
12mm Bolt (2)
12mm Nut (2)
12mm Washer

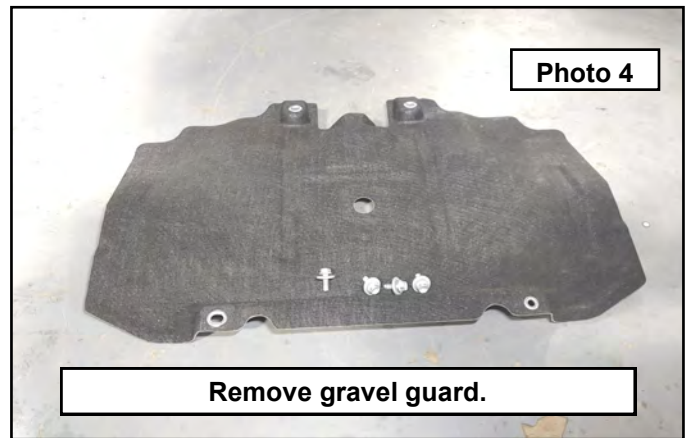
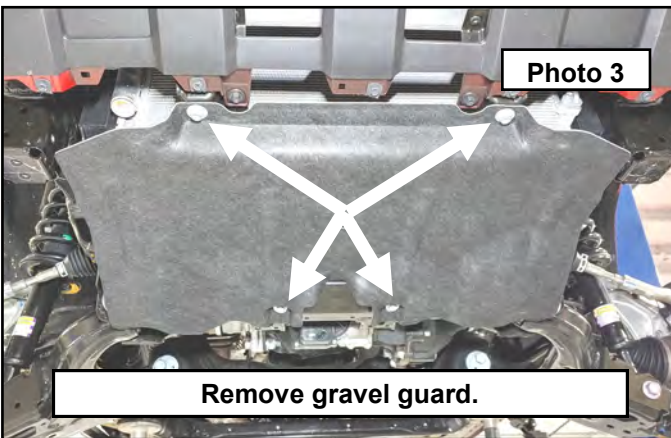


Front Shackle Bracket Installation:

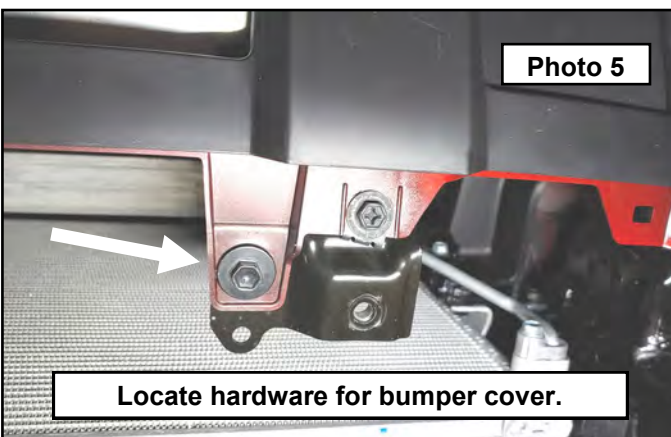
1. Park your vehicle on a clean flat surface, engage the parking brake and block the rear tires.
2. **Save all hardware removed from the vehicle unless otherwise noted.**
3. Remove the stock tow ring on the passenger side and tie down point on the drivers side frame rails using a 17mm socket. **Photo 1 / 2**



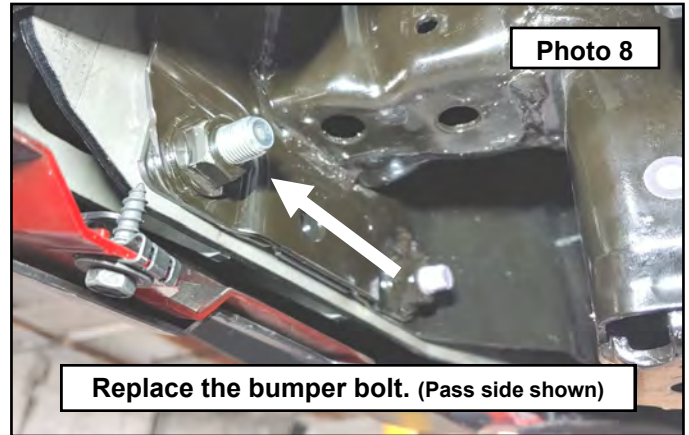
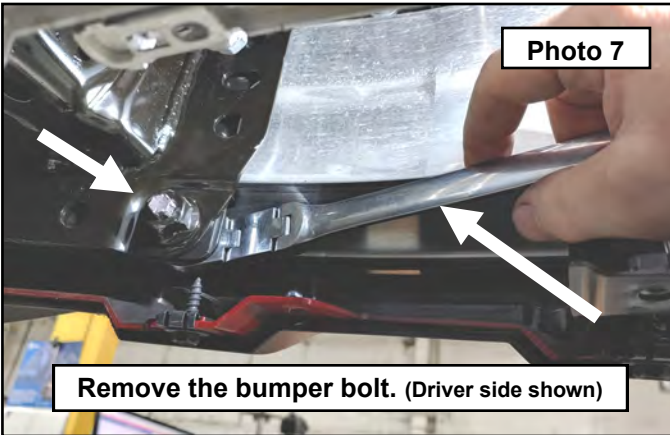
4. Remove the gravel guard using a 12mm socket and set aside. **Photo 3 / 4**



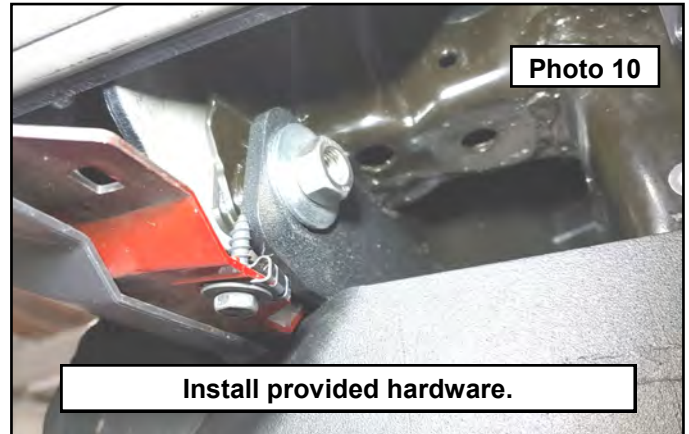
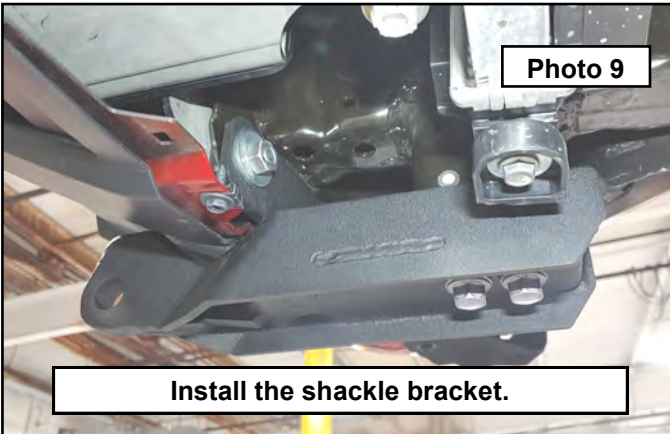
5. Locate the bumper cover hardware that holds it to the brackets on the inner bumper structure and remove using a 10mm socket. **Photo 5 / 6**



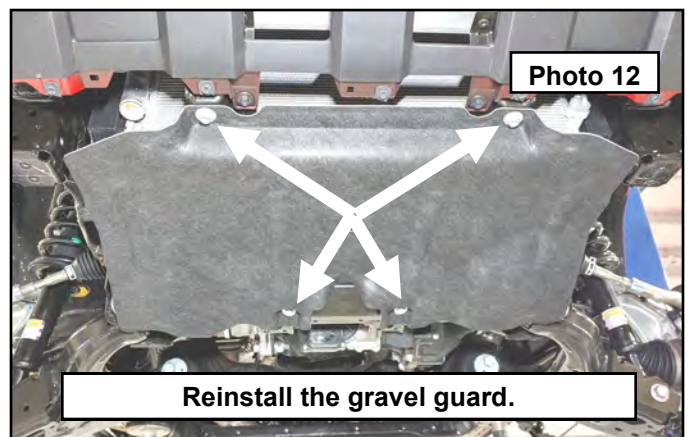
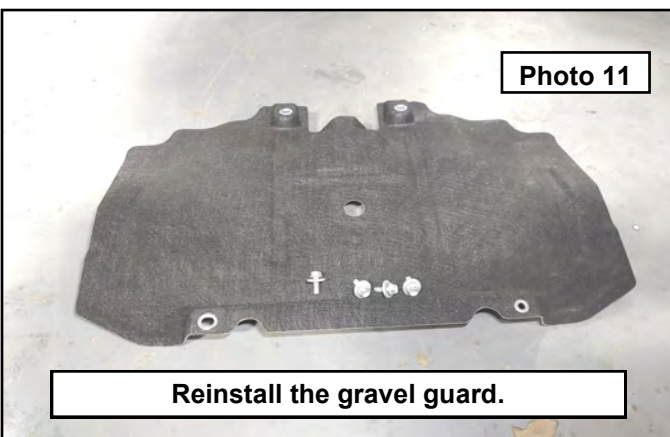
6. Once the bumper cover is loose, locate the lower, inner bumper mount hardware on the frame. Pull the bumper cover out and away from the inner bumper structure, and remove the lower / inner bolt from the frame using a 17mm wrench. An articulating head ratcheting wrench is suggested for this to help with removal. **Photo 7**
7. Replace the removed factory bolt with the provided 12mm x 35mm bolt using a 19mm wrench. **Photo 8**



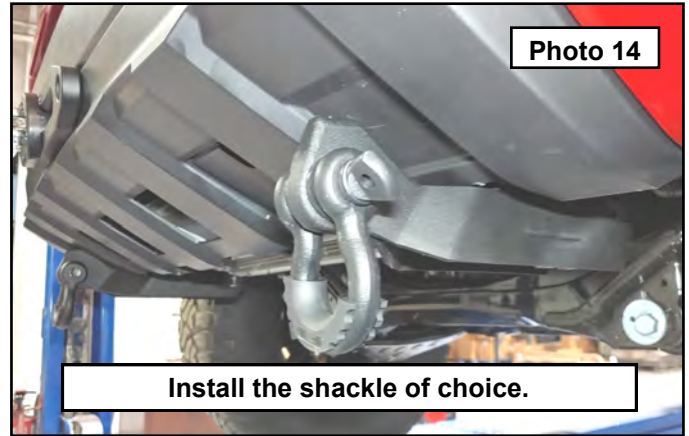
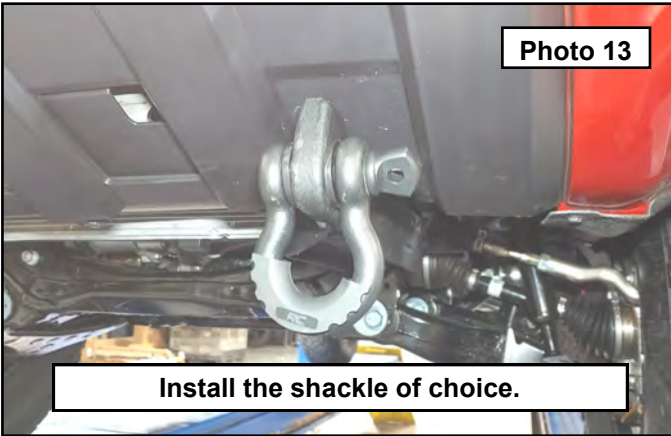
8. Raise the shackle bracket into place. The large hole in the upper bracket will sit over the nut on the frame rail. Install the previously removed factory tow ring / tie down hardware but do not fully tighten. These shackle brackets are designed to be a tight fit around the frame stub to lock onto the frame and due to manufacturing variances it may take a rubber mallet to tap into place. Make sure to pull the bracket as far forward as possible while lining up the large hole to fit around the nut on the factory bumper bracket. Once fully seated, install the provided 12mm nut and washer to the bumper bolt. Tighten all hardware to 35 ft-lbs. **Photo 9 / 10**



9. Reinstall the gravel guard using the factory hardware. **Photo 11 / 12**



10. Install the shackle or D-ring of choice. Photo 13 / 14



By purchasing any item sold by Rough Country, LLC, the buyer expressly warrants that he/she is in compliance with all applicable , State, and Local laws and regulations regarding the purchase, ownership, and use of the item. It shall be the buyers responsibility to comply with all Federal, State and Local laws governing the sales of any items listed, illustrated or sold. The buyer expressly agrees to indemnify and hold harmless Rough Country, LLC for all claims resulting directly or indirectly from the purchase, ownership, or use of the items.