

Kawasaki Teryx 2021 Winch Mount

Thank you for choosing Rough Country for all your vehicle needs.

Please read instructions before beginning installation. Check the kit hardware against the kit contents shown below. Be sure you have all needed parts and know where they go.

If question exist, please call us @1-800-222-7023. We will be happy to answer any questions concerning this product.

Check all fasteners for proper torque. Check to ensure for adequate clearance between all components.

Periodically check all hardware for tightness.

KIT CONTENTS:
Winch Bracket x1

TOOLS NEEDED:
14mm Wrench or Socket
17mm Wrench or Socket

HARDWARE INCLUDED:
10mm Flat Washer x4
10mm -1.25 x 20mm Hex Head Bolt x4



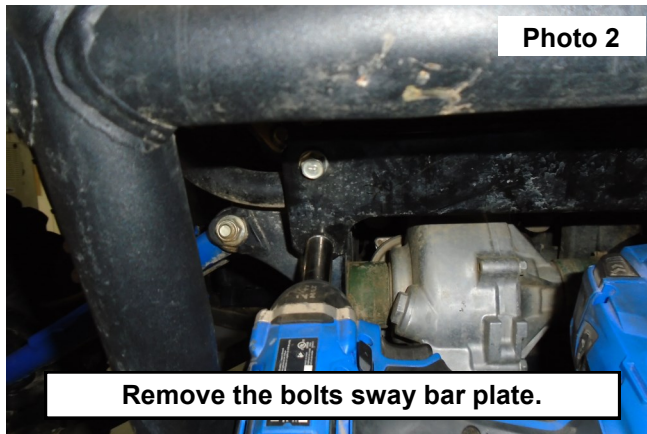
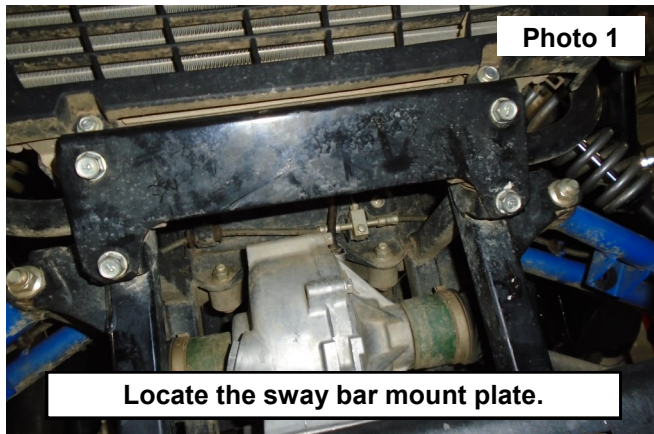
Torque Specs:

Size	Grade 5	Grade 8	Size	Class 8.8	Class 10.9
5/16"	15 ft/lbs	20ft/lbs	6MM	5ft/lbs	9ft/lbs
3/8"	30 ft/lbs	35ft/lbs	8MM	18ft/lbs	23ft/lbs
7/16"	45 ft/lbs	60ft/lbs	10MM	32ft/lbs	45ft/lbs
1/2"	65 ft/lbs	90ft/lbs	12MM	55ft/lbs	75ft/lbs
9/16"	95 ft/lbs	130ft/lbs	14MM	85ft/lbs	120ft/lbs
5/8"	135ft/lbs	175ft/lbs	16MM	130ft/lbs	165ft/lbs
3/4"	185ft/lbs	280ft/lbs	18MM	170ft/lbs	240ft/lbs

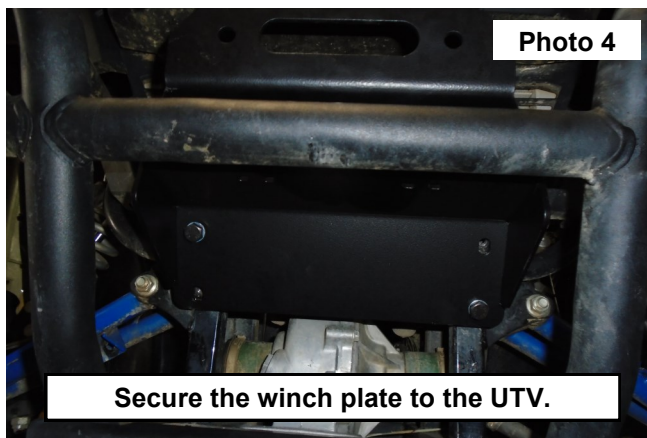
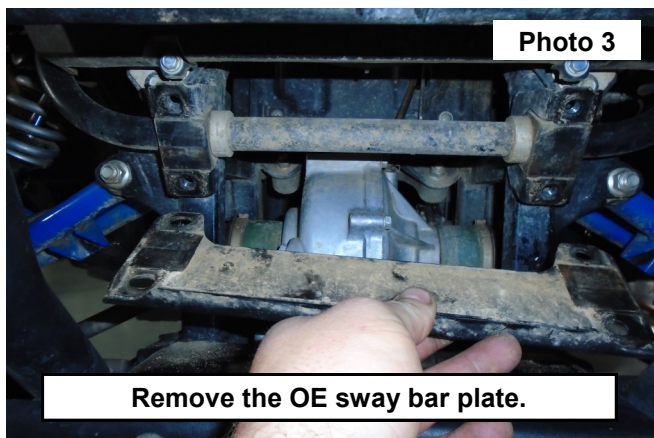


INSTALLATION INSTRUCTIONS

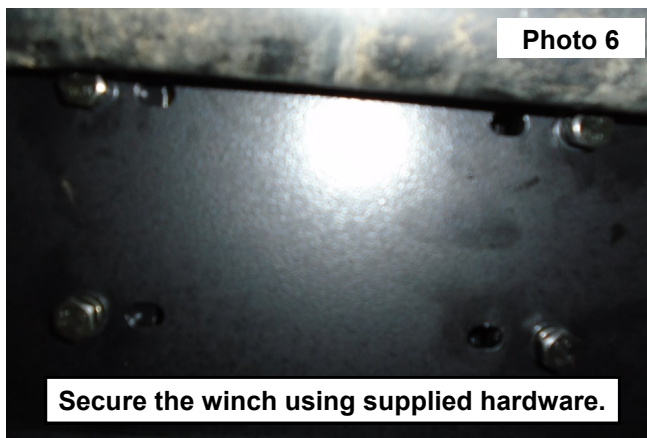
1. Locate the sway bar mount plate. **See Photo 1.**
2. Remove the (4) bolts from the plate using a 14mm socket. **See Photo 2.**



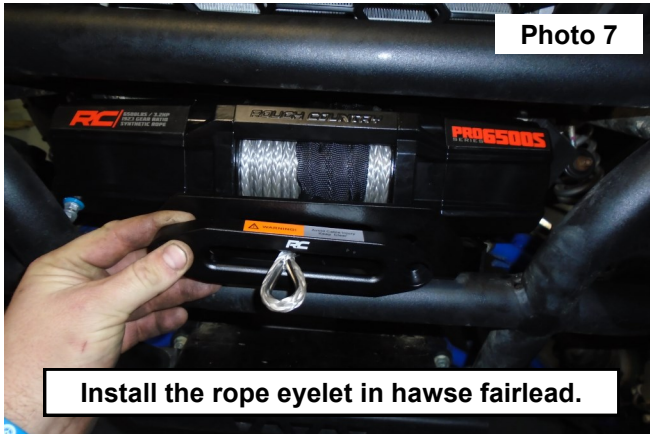
3. Remove the sway bar mount plate and set aside this will not be reused. **See Photo 3.**
4. Place the winch plate onto the sway bar mount and secure by using (4) of the supplied 10mm flat washers and (4) 10mm -1.25 x 20mm hex head bolts. Tighten using a 17mm socket. **See Photo 4.**



5. Place the winch into the winch plate and secure using the supplied bolts in the winch kit. **See Photo 5.**
6. Tighten the winch with the corresponding tool with the hardware. **See Photo 6.**



7. Place the winch rope eyelet through the winch plate and the hawse fairlead. **See Photo 7.**
8. Secure the hawse fairlead to the winch plate using the hardware supplied in the winch kit. Tighten at this time. **See Photo 8.**



9. Install the hook onto the rope eyelet using the supplied pin and safety pin. **See Photo 9.**
10. Connect the winch power harness to the UTV using the instruction sheet supplied with the winch kit.



POST INSTALLATION INSTRUCTIONS

1. Check all fasteners for proper torque. Check to ensure for adequate clearance between all rotating, mobile, fixed, and heated members. Verify clearance between exhaust and brake lines, fuel lines, fuel tank, floorboards, and wiring harness.
2. Check electrical wiring to ensure adequate clearance between all rotating, mobile, fixed, and heated members.



By purchasing any item sold by Rough Country, LLC, the buyer expressly warrants that he/she is in compliance with all applicable, State, and Local laws and regulations regarding the purchase, ownership, and use of the item. It shall be the buyers responsibility to comply with all Federal, State and Local laws governing the sales of any items listed, illustrated or sold. The buyer expressly agrees to indemnify and hold harmless Rough Country, LLC for all claims resulting directly or indirectly from the purchase, ownership, or use of the items.

