

ROUGH COUNTRY

SUSPENSION SYSTEMS®

TOYOTA 2024 TACOMA DOUBLE CAB HD2 STEP

Thank you for choosing Rough Country for all your vehicle needs.

Please read instructions before beginning installation. Check the kit hardware against the kit contents shown below. Be sure you have all needed parts and know where they go.

If question exist, please call us @1-800-222-7023. We will be happy to answer any questions concerning this product.

Check all fasteners for proper torque. Check to ensure for adequate clearance between all components.

Periodically check all hardware for tightness.

KIT CONTENTS:

Step Rails x2
 Dr. Front Bracket x1
 Pass. Front Bracket x1
 Dr. Middle/Rear Bracket x2
 Pass. Middle/Rear Bracket x2
 Tread Plate x4
 Front End Cap x2
 Rear End Cap x2

TOOLS NEEDED:

10mm Wrench or Socket
 13mm Wrench or Socket

HARDWARE INCLUDED:

12 - 6mm Lock Nut
 12 - 6mm x 20mm Bolt
 12 - 6mm Flat Washer
 8 - 6mm x 15mm Button Head Bolt
 8 - 6mm Hex Nut
 24 - 8mm Self Threading Nut



Torque Specs:

Size	Grade 5	Grade 8	Size	Class 8.8	Class 10.9
5/16"	15 ft/lbs	20ft/lbs	6MM	5ft/lbs	9ft/lbs
3/8"	30 ft/lbs	35ft/lbs	8MM	18ft/lbs	23ft/lbs
7/16"	45 ft/lbs	60ft/lbs	10MM	32ft/lbs	45ft/lbs
1/2"	65 ft/lbs	90ft/lbs	12MM	55ft/lbs	75ft/lbs
9/16"	95 ft/lbs	130ft/lbs	14MM	85ft/lbs	120ft/lbs
5/8"	135ft/lbs	175ft/lbs	16MM	130ft/lbs	165ft/lbs
3/4"	185ft/lbs	280ft/lbs	18MM	170ft/lbs	240ft/lbs

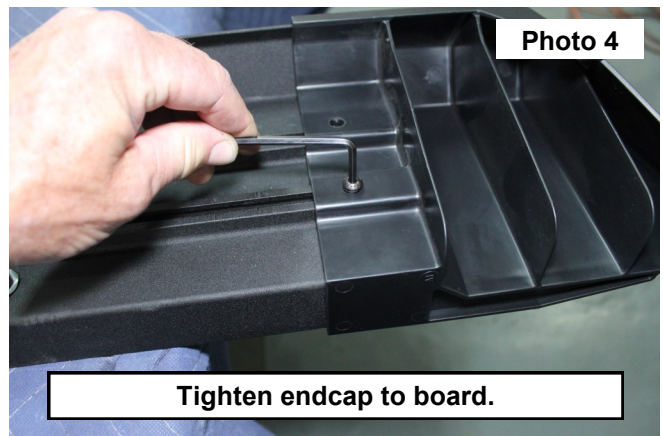
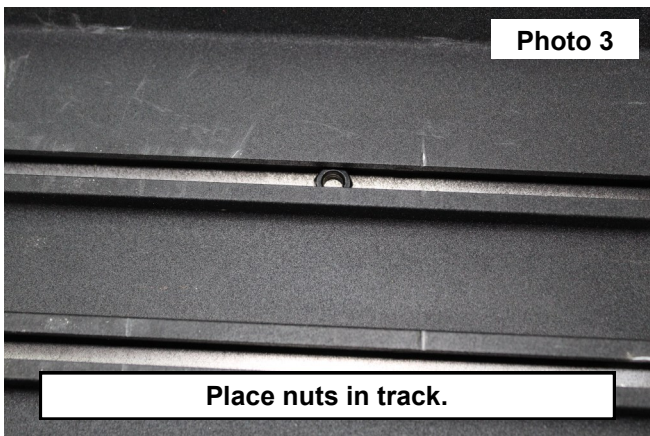


HD2 BOARD ASSEMBLY

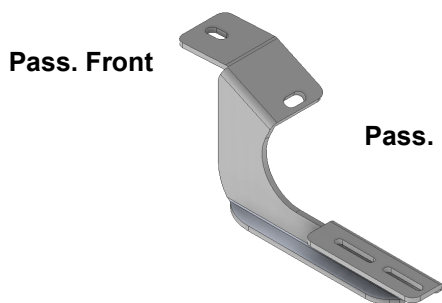
1. Place molded tread plate onto the running board by aligning the pegs with the holes in the step board. **See Photo 1.**
2. Secure the tread plate to the step board with the supplied self-threading nut using a 13mm socket. **See Photo 2.**



3. Place (1) supplied 6mm x 20mm bolt in each track for each bracket on one side of the vehicle.
4. Place (2) 6mm finish nuts into the track on the underside of the step board. **See Photo 3.**
5. Use (2) supplied 6mm lock washers and button head bolts to secure the endcap to the step board. Tighten with a 4mm Allen wrench. **See Photo 4.**

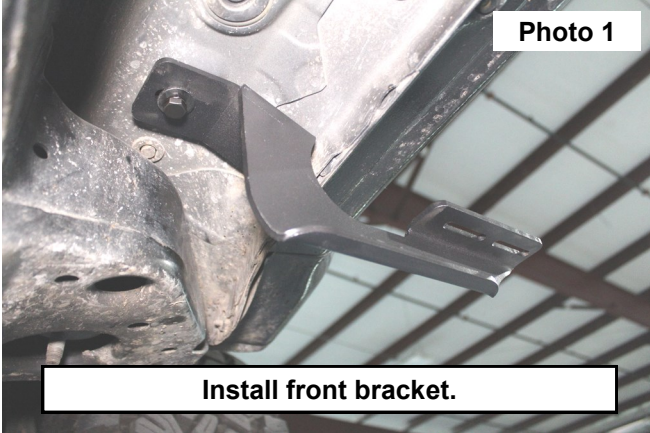


6. Repeat Step 4 to install the other end cap.
7. Repeat Step 1 through Step 6 for other side of vehicle.

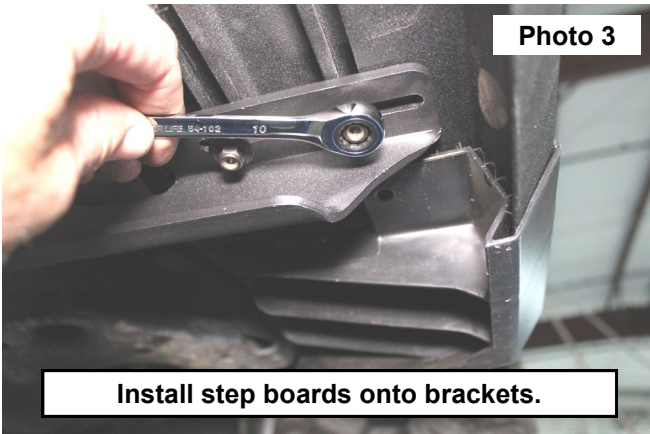


INSTALLATION INSTRUCTIONS

1. Using a 12mm, remove the factory hardware from the rocker panel for all 3 mounting brackets.
2. Install the front bracket using the OE hardware. Use a 12mm wrench to tighten. **See Photo 1.**
3. Install the middle and rear brackets using the OE hardware. Use a 12mm wrench to tighten. **See Photo 2.**



4. Align the bolts in the track of the assembled step boards with the slots of the brackets. Use the supplied 6mm washer and lock nut to secure. Use a 10mm wrench to tighten. **See Photo 3.**
5. Repeat for other side.



By purchasing any item sold by Rough Country, LLC, the buyer expressly warrants that he/she is in compliance with all applicable, State, and Local laws and regulations regarding the purchase, ownership, and use of the item. It shall be the buyers responsibility to comply with all Federal, State and Local laws governing the sales of any items listed, illustrated or sold. The buyer expressly agrees to indemnify and hold harmless Rough Country, LLC for all claims resulting directly or indirectly from the purchase, ownership, or use of the items.

