



## FORD 1999-2016 SUPERDUTY SUPERCREW CAB HD2 STEP

Thank you for choosing Rough Country for all your vehicle needs.

Please read instructions before beginning installation. Check the kit hardware against the kit contents shown below. Be sure you have all needed parts and know where they go.

If question exist, please call us @1-800-222-7023. We will be happy to answer any questions concerning this product.

Check all fasteners for proper torque. Check to ensure for adequate clearance between all components.

Periodically check all hardware for tightness.

### KIT CONTENTS:

- Step Rails x2
- Bracket x6
- Tread Plate x4
- Front End Cap x2
- Rear End Cap x2

### TOOLS NEEDED:

- 10mm Wrench or Socket
- 13mm Wrench or Socket

### HARDWARE INCLUDED:

- 12 - 8mm x 25mm Bolt
- 18 - 8mm Oversize Washer
- 6 - 8mm Lock Nut
- 6 - 8mm Clip Nut
- 6 - 8mm Lock Washer
- 12 - 6mm Flat Washer
- 12 - 6mm Lock Nut
- 12 - 6mm x 20mm Bolt
- 12 - 6mm Flat Washer
- 8 - 6mm x 15mm Button Head Bolt
- 8 - 6mm Hex Nut
- 24 - 8mm Self Threading Nut



### Torque Specs:

Size	Grade 5	Grade 8	Size	Class 8.8	Class 10.9
5/16"	15 ft/lbs	20ft/lbs	6MM	5ft/lbs	9ft/lbs
3/8"	30 ft/lbs	35ft/lbs	8MM	18ft/lbs	23ft/lbs
7/16"	45 ft/lbs	60ft/lbs	10MM	32ft/lbs	45ft/lbs
1/2"	65 ft/lbs	90ft/lbs	12MM	55ft/lbs	75ft/lbs
9/16"	95 ft/lbs	130ft/lbs	14MM	85ft/lbs	120ft/lbs
5/8"	135ft/lbs	175ft/lbs	16MM	130ft/lbs	165ft/lbs
3/4"	185ft/lbs	280ft/lbs	18MM	170ft/lbs	240ft/lbs

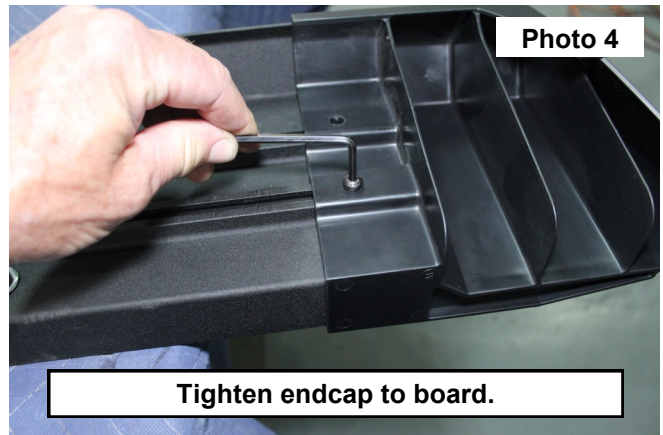
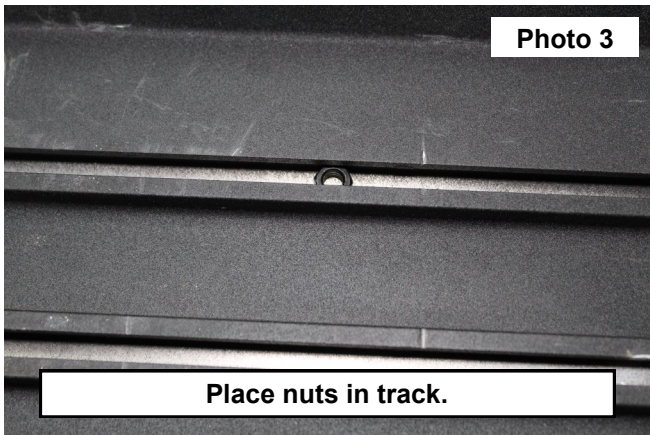


## HD2 BOARD ASSEMBLY

1. Place molded tread plate onto the running board by aligning the pegs with the holes in the step board. **See Photo 1.**
2. Secure the tread plate to the step board using a 13mm socket. **See Photo 2.**



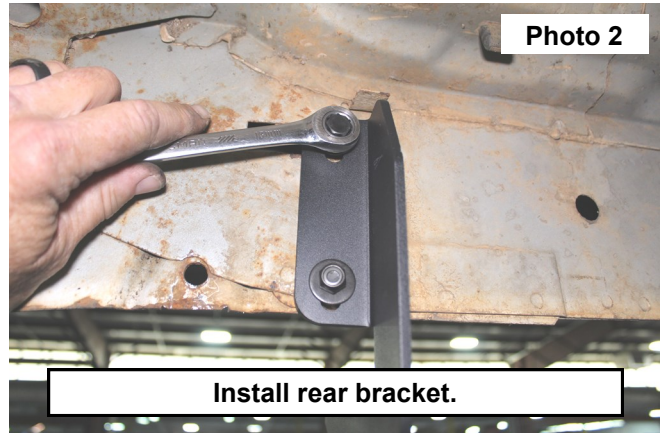
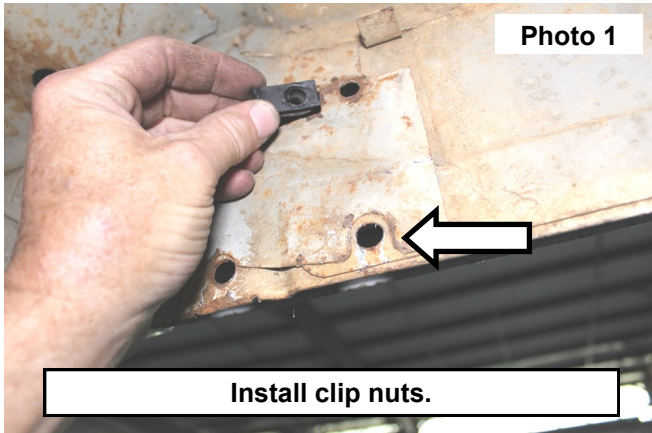
3. Place (2) 6mm nuts into the track on the underside of the step board. **See Photo 3.**
4. Use (2) supplied 6mm lock washers and button head bolts to secure the endcap to the step board. Tighten with a 4mm Allen wrench. **See Photo 4.**



5. Slide (2) 6mm x 18mm bolts into each track on the step board.
6. For each bracket, slide a supplied 6mm x 20mm bolt into each track.
7. Repeat Step 4 to install the other end cap.

## INSTALLATION INSTRUCTIONS

1. Locate the factory mounting holes in the rocker panel of the vehicle. Install the supplied 8mm clip nuts and 8mm bolt in the shown location. **See Photo 1.**
2. Install the bracket by threading a supplied 8mm bolt, lock washer, and oversize washer in the upper slot, and an 8mm oversize washer and lock nut for the lower slot. Tighten with a 13mm wrench. **See Photo 2.**



3. Align the bolts in the track of the assembled step boards with the slots of the brackets. Use the supplied 6mm washer and lock nut to secure. Use a 10mm wrench to tighten. **See Photo 3.**
4. Repeat for other side.



By purchasing any item sold by Rough Country, LLC, the buyer expressly warrants that he/she is in compliance with all applicable, State, and Local laws and regulations regarding the purchase, ownership, and use of the item. It shall be the buyers responsibility to comply with all Federal, State and Local laws governing the sales of any items listed, illustrated or sold. The buyer expressly agrees to indemnify and hold harmless Rough Country, LLC for all claims resulting directly or indirectly from the purchase, ownership, or use of the items.

