

IMPORTANT: READ BEFORE INSTALLATION

Step 1: Prior to Installation

- A) Stampede Products only approves installing these Fender Flares according to these written instructions with the hardware provided. **WARNING:** Failure to install according to these instructions will invalidate the warranty. This includes, but not limited to using alternative installation methods, hardware, or materials. **DO NOT USE:** Loctite, SuperGlue, or similar products on the hardware or the flares.
- B) Inspect the Fender Flares thoroughly for defects or damage and verify the contents of package.
- C) Verify the fit of the flares to the vehicle. (Some filing, sanding, or cutting may be necessary to ensure proper fit).
- D) **Painting (Optional): PAINTED FLARES CANNOT BE RETURNED, TEST FIT BEFORE PAINTING.** If painting is desired it must be done prior to installing flares on vehicle. Clean outer surface with a good grade degreaser. **DO NOT USE LACQUER THINNER OR ENAMEL REDUCER AS A DEGREASER.** Wipe outer surface thoroughly with a tack rag prior to paint. Application of plastic adhesion promoter for ABS plastic as per your paint system manufacturer's recommendations is required. Paint flares using a high quality enamel, or polyurethane automotive paint. If painting edge trim (not recommended) use a flex additive.

KIT CONTAINS:
 (4) FENDER FLARES
 (29) FEET OF EDGE TRIM
 (38) DECORATIVE BOLTS NUTS AND WASHERS
 (4) U-CLIPS
 (4) ANGLE BRACKETS
 (8) CL1-0018
 (8) CL1-0019
 (8) BLACK TABS
 (12) SCREWS
TOOLS NEEDED:
 #2 PHILLIPS DRIVER
 7/32" SOCKET
NOTE: FENDER FLARES ARE MARKED ON INSIDE AS TO FITMENT.
 1-DRIVER FRONT
 2-PASSENGER FRONT
 3-DRIVER REAR
 4-PASSENGER REAR

Step 2: Installation

A) Edge Trim Installation:

1. Peel three inches of red backing away from edge trim adhesive and affix to outer edge of flare at one end.
2. Press edge trim into place along edge of flare in one-foot increments, pulling red backing free as you continue to work your way around the flare. (Figure 1)

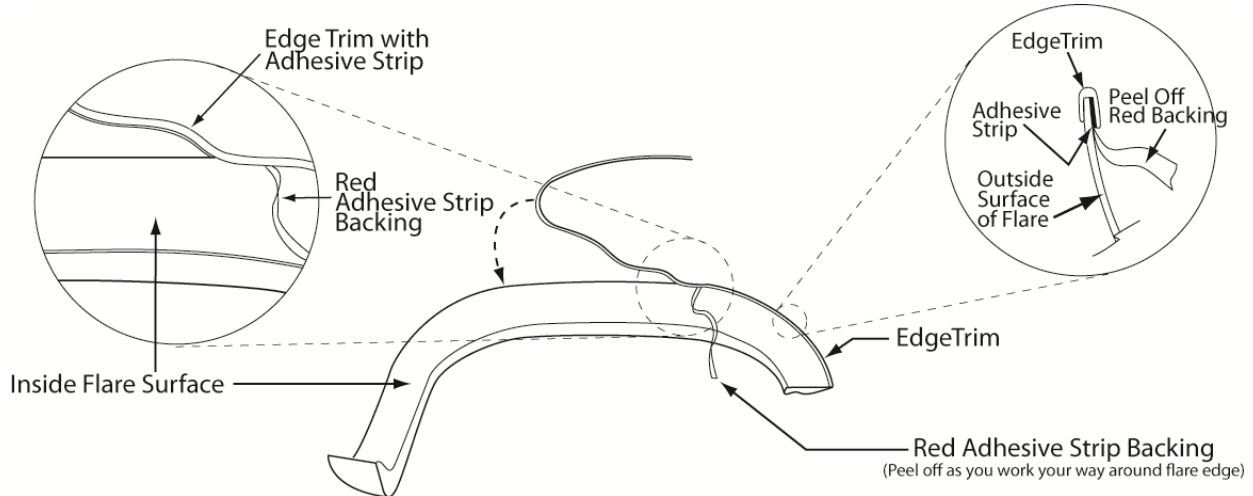


Figure 1

B) Bolt installation:

1. Place a 5/16 button head screw with a washer into each of the holes and attach to the flare using a nut placed on the inside. (Figure 2)
2. **Warning: Do not over tighten or use Loctite on the bolts as this will cause permanent damage to the flares. Bolts are decorative only and fasten only to the flares. Do not attempt to use the bolts to fasten the flares to the vehicle.**

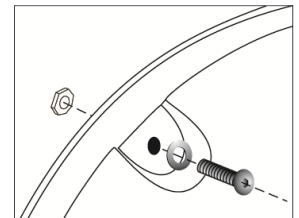
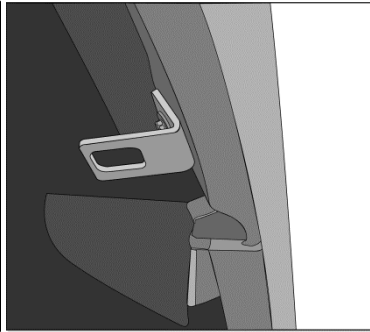
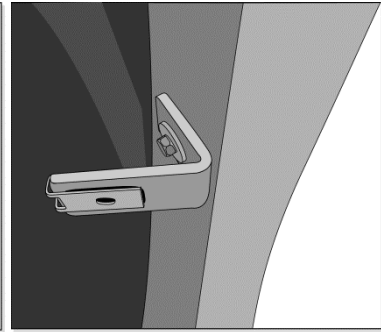


Figure 2

c) Front Flare Installation:

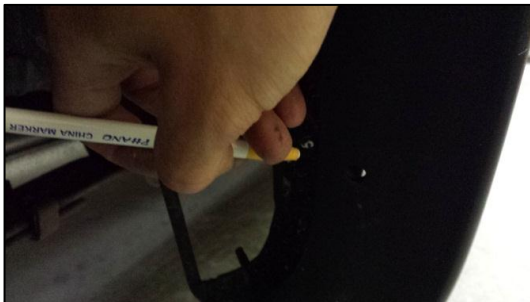
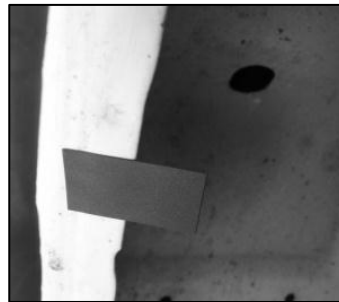
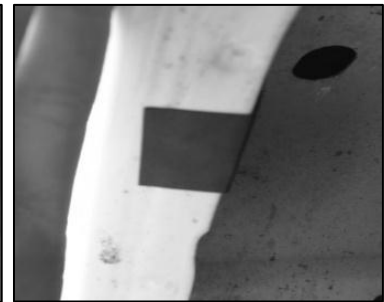
1. Remove factory flares and mud flaps if installed.
2. Remove the four factory screws with 7/32" socket indicated in **Figure 3**. The top two screws are on the inside of the fender well. Save for reinstallation.
3. Hold the flare up to vehicle to ensure proper fitment before continuing installation.
4. Install an angle bracket as shown using the factory screws removed in step two into the top two locations in the fender well. **Figure 4**
5. Install one u clip onto each of the angle brackets as shown in **Figure 5**.

**Figure 3****Figure 4****Figure 5**

6. Place the flare to the truck while applying moderate pressure and attach the flare to the two u clips using the included screws from the hardware kit for the top two locations. Use the remaining two factory screws removed from step two on the lower two flare locations **Figure 6**.

**Figure 6****D) Rear Flare Installation:**

1. Remove factory flares and mud flaps if installed.
2. Hold the flare up to vehicle to ensure proper fitment before continuing installation. While holding the flare in place, mark the hole positions onto the fender well lip with a grease pencil as shown in **Figure 7**.

**Figure 7****Figure 8****Figure 9**

3. Remove the white backing from the black tabs and install half over the grease pencil mark as shown in **Figure 8** and fold the remaining part of the black tab over the fender lip as shown in **Figure 9**.

4. Insert CL1-0018 into the slot of the CL1-0019 and then press down as shown in **Figure 10**, **Figure 11** and **Figure 12** until the clip snaps into place. The two raised bumps on CL1-0018 will be on the inside of the assembled bracket making contact with CL1-0019.



Figure 10



Figure 11

5. Install the clip over the black tab being sure to keep the flat side facing the wheel as shown in **Figure 13**.



Figure 12



Figure 13

6. Install the flare with the supplied screws while applying moderate pressure to the outside surface of the flare. **Figure 14**



Figure 14