

Step 1: Prior to Installation

- A) Stampede Products only approves installing this Hood Protector according to these written instructions with the hardware provided. **WARNING:** Failure to install according to these instructions will invalidate the warranty. This includes, but not limited to using alternative installation methods, hardware, or materials.
- B) Inspect the Hood Protector thoroughly for defects or damage and verify the contents of package.

KIT CONTAINS:

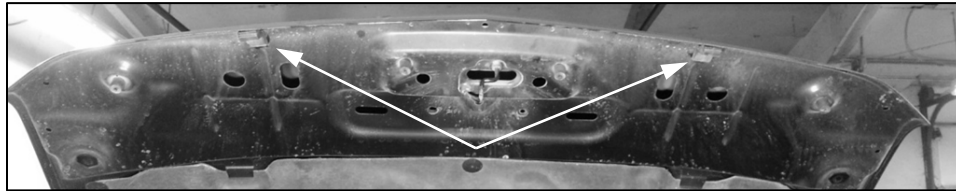
- (1) HOOD PROTECTOR
- (3) SCREWS
- (3) FLAT WASHERS
- (3) GROMMET NUTS

TOOLS NEEDED:

- PHILLIPS SCREWDRIVER

Step 2: Installation

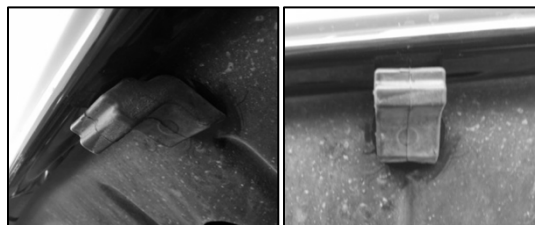
- A) Lift the hood and remove any dirt or debris. Locate two rubber bumpers installed on the underside of the hood as shown in **Figure 1**.

**Figure 1**

- B) Remove the bumpers from the hood by turning them 90° and then pulling straight out as shown in **Figure 2**. Set the bumpers aside as they will be reinstalled after the hood shield is installed.

**Figure 2**

- C) Test fit the hood shield to the truck taking note the locations of the mounting holes in hood that are to be used.
- D) Insert a plastic grommet nut into each of the holes located in step c.
- E) Fit the hood protector to the truck and install a mounting screw and flat washer through the slots in the hood protector and into the grommet nuts. Apply enough pressure on the screws when threading them in so that the grommet nut does not spin in the hole. Prior to tightening the screws carefully center the hood protector on the truck. **DO NOT OVER TIGHTEN OR USE A DRILL, THIS MAY DAMAGE YOUR NEW HOOD PROTECTOR.**
- F) Reinstall the two rubber bumpers as shown in **Figure 3** using the same method they were removed. Insert at 90° and rotate so the hood protector is between the bumpers and the hood.

**Figure 3**

CLEANING: USE ONLY SOAPY WATER AND A SOFT CLOTH. NEVER USE PAPER TOWELS, PETROLEUM PRODUCTS OR SOLVENTS TO CLEAN YOUR HOOD PROTECTOR.

IMPORTANT INFORMATION

-AFTER INSTALLING THE HOOD PROTECTOR CHECK FOR FIT. MAKE SURE THE HOOD PROTECTOR IS NOT TOUCHING THE PAINT IN ANY SPOTS THAT MAY CAUSE RUBBING BY VEHICLE VIBRATION AS THIS INDICATES AN IMPROPER INSTALLATION. IF YOUR APPLICATION REQUIRES BUMP-ONS MAKE SURE THEY ARE INSTALLED PROPERLY.

-STAMPEDE WILL NOT PAY FOR PAINT TOUCH UPS OR REPAIRS ON HOODS DUE TO IMPROPER INSTALLATION.

IMPORTANT NOTICE – PLEASE READ

Occasionally, upon installation aftermarket parts such as hood protectors can cause what often sounds like tapping to come from the trim running along the windshield and the A-pillar as shown in the figure below. Depending on the individual vehicle this can occur at various speeds or not at all. Should your truck experience this issue the trim can be secured down using double sided adhesive tape or silicon placed between the trim and the windshield.

Instructions:

- A) Locate the loose trim as shown in **Figure 1**.
- B) With the doors open you should be able to pull the trim back with your fingers as shown in **Figure 2**.
- C) Carefully pull back the trim and apply the double sided adhesive tape or silicon underneath the trim on the window. Apply along as much of the trim as you can without removing or forcing the trim off. As shown in **Figures 2 & 3**.
- D) Press the trim down firmly to secure it to the window as shown in **Figure 4**.
- E) Repeat for both sides of the window.

Hardware not included

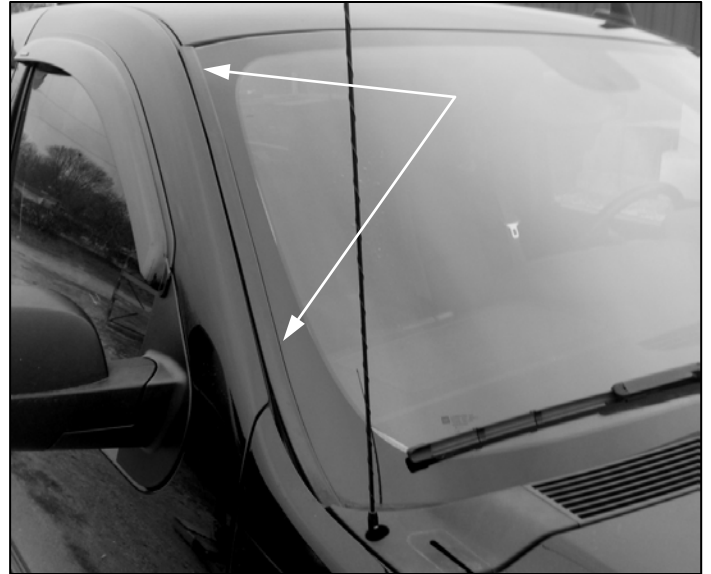


Figure 1



Figure 2



Figure 3



Figure 4