

54473

**05-07 DODGE
MAGNUM**



54473

**05-07 DODGE
MAGNUM**

UPPER CLASS SERIES MESH GRILLE

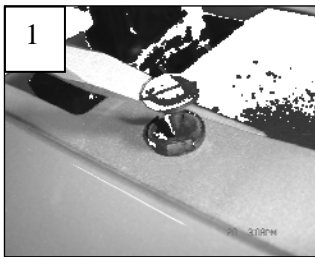
Tools Required:

Slotted screwdriver
7mm, 8mm & 10mm Sockets / Ratchet
Drill & 1/8" Drill Bit
Small Hammer and 1/16" Punch
Die Grinder or Jigsaw
Masking Tape

Hardware:

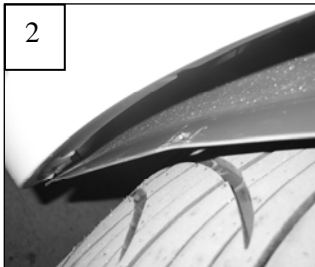
1 Mesh Insert
12 6-32 Nylon Lock Nuts
12 3/4 'L Hooks'
6 Plastic Push-In Fasteners

Read and understand instructions before attempting installation



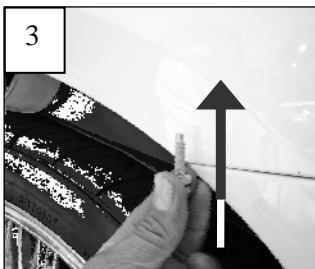
Step 1

This grille will not fit STR models. Open the hood. Test fit the grille over the opening; the grille should have the same shape as the bumper opening. Use a screwdriver to remove the six push in fasteners along the top of the bumper cover (1). Next, remove the two-piece plastic cover assembly behind the four fasteners. Each cover has metal press-in clips securing them in place. Pull up on the covers to remove them. Remove the 7mm bolts that hold the engine splash shield to the bumper cover along the bottom. Behind the grille in each lower corner is a molded flap that is secured to the foam bumper pad. Access these fasteners through the area from the two-piece cover on top. These are a special 1/8" square head design screw. These can be unscrewed by hand.



Step 2

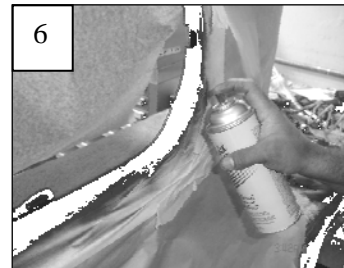
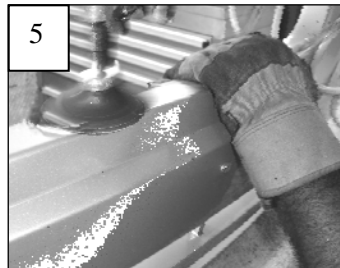
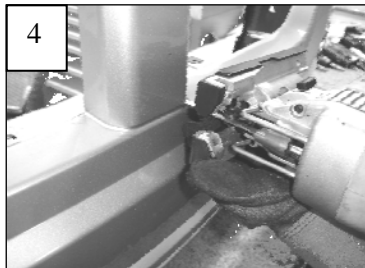
Remove the three plastic rivets securing the bumper cover to splash shields just below the fender line in each wheel well; 6 total (2). Use a small hammer and punch to remove the center from each plastic rivet. These rivets will be replaced with new hardware. Each end of the bumper cover is secured to the fenders with a 10mm bolt. Pull the wheel well splash shields back and remove the vertical bolt in each corner (3).



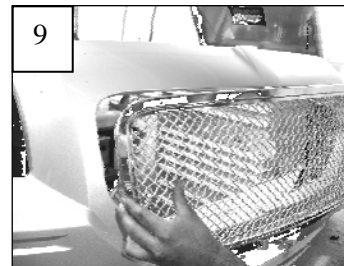
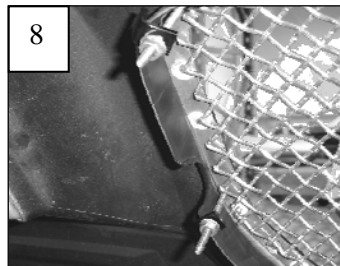
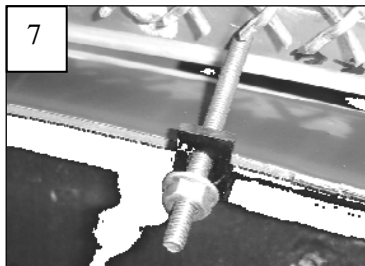
Now the splash shields below the engine must be removed. Note how they interlock; they will need to be re-installed the same way. Remove the nine 7mm bolts along the Bottom. There are two 10mm bolts in the center of this splash shield that must also be removed.

5447354473*(Continued)***Step 2**

The fog lights (if equipped) must be disconnected and removed from the bumper cover. Gently pull the bumper cover forward about 2" on each side. This will gain access to the lights. Twist each light socket assembly and remove. Now the bumper can be removed. Pull the bumper assembly forward. The foam bumper pad behind the bumper cover does not need to be removed from the vehicle. Remove the factory grille inserts. Unscrew the Phillips screws securing the bottom of the inserts. Depress the two clips on top of the inserts. Pull the inserts out of the bumper opening.

**Step 3**

Apply masking tape to the face of the bumper cover. Use a jig-saw or die grinder to cut the center cross bars from the grille opening (4). Make your cuts at the base of the bars (4). Use a die grinder or file to clean the cuts (5). Apply a coat of black spray paint to hide the surfaces in the opening (6). Cut the tabs that hold the factory inserts in place.

**Step 4**

The mounting studs are welded to the back of the grilles; these studs may need to be slightly bent by hand so they align properly. Center the grille into the opening. Check the alignment the grille in comparison to the face of the bumper cover. Center the insert; install the 'L' hook brackets, washers and Nylon lock nuts onto each stud. Wrap the 'L' hook brackets around the rear of the opening (Fig. 7 & 8). Tighten the hardware using an 8mm socket.

Step 5

If installing a bumper grille; install at this time. Re-install and assemble the bumper cover assembly back onto the vehicle. The rivets removed from the wheel wells are not re-usable. Replace the three rivets from each wheel well splash shield with the plastic push-in fasteners supplied in the hardware pack.

Thank you for purchasing a T-Rex Billet Grille. 2/14/07