

INSTALLATION INSTRUCTIONS

HDX RUNNING BOARD

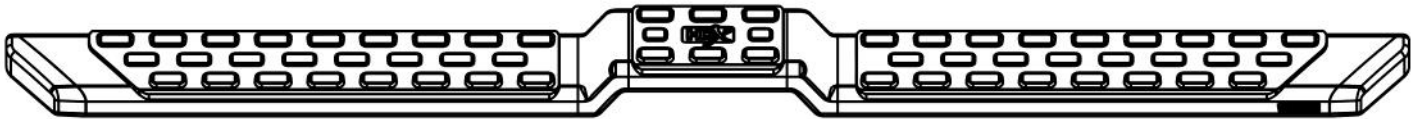
WESTIN®

APPLICATION:
F-150 SUPER CREW 2015-2023
F250/350 CREW CAB 2017-2023
PART NUMBER:
55-32375

CONTENT

ITEM	QUANTITY	DESCRIPTION	TOOLS NEEDED
1	1	DRIVER STEP BAR ASSEMBLY 84"	13MM SOCKET
2	1	PASSENGER STEP BAR ASSEMBLY 84"	13MM WRENCH
3	2	DRIVER/PASSENGER FRONT BRACKET	15MM SOCKET
4	2	DRIVER/PASSENGER MIDDLE BRACKET	15MM WRENCH
5	1	DRIVER REAR MOUNT BRACKET	RATCHET
6	1	PASSENGER REAR MOUNT BRACKET	TORQUE WRENCH
7	6	PLATE ADAPTER	
8	6	UNIVERSAL MOUNTING BRACKET	
9	6	BRACKET COVER	
10	12	M6 HEX HEAD CAP SCREW (YELLOW ZINC)	
11	24	M6 FLAT WASHER (YELLOW ZINC)	
12	12	M6 NYLOCK NUT (YELLOW ZINC)	
13	24	M8 SPLIT LOCK WASHER (YELLOW ZINC)	
14	24	M8 FLAT WASHER (YELLOW ZINC)	
15	24	M8 HEX NUT (YELLOW ZINC)	
16	6	M8 ROUND HEAD SQUARE NECK BOLT (BLACK ZINC)	
17	12	M8 SPLIT LOCK WASHER (BLACK ZINC)	
18	12	M8 FLAT WASHER (BLACK ZINC)	
19	12	M8 HEX NUT (BLACK ZINC)	
20	18	M8 PLASTIC RETAINER SQUARE	

ANTI-SEIZE LUBRICANT MUST BE USED ON ALL STAINLESS STEEL FASTENERS TO PREVENT THREAD DAMAGE AND GALLING



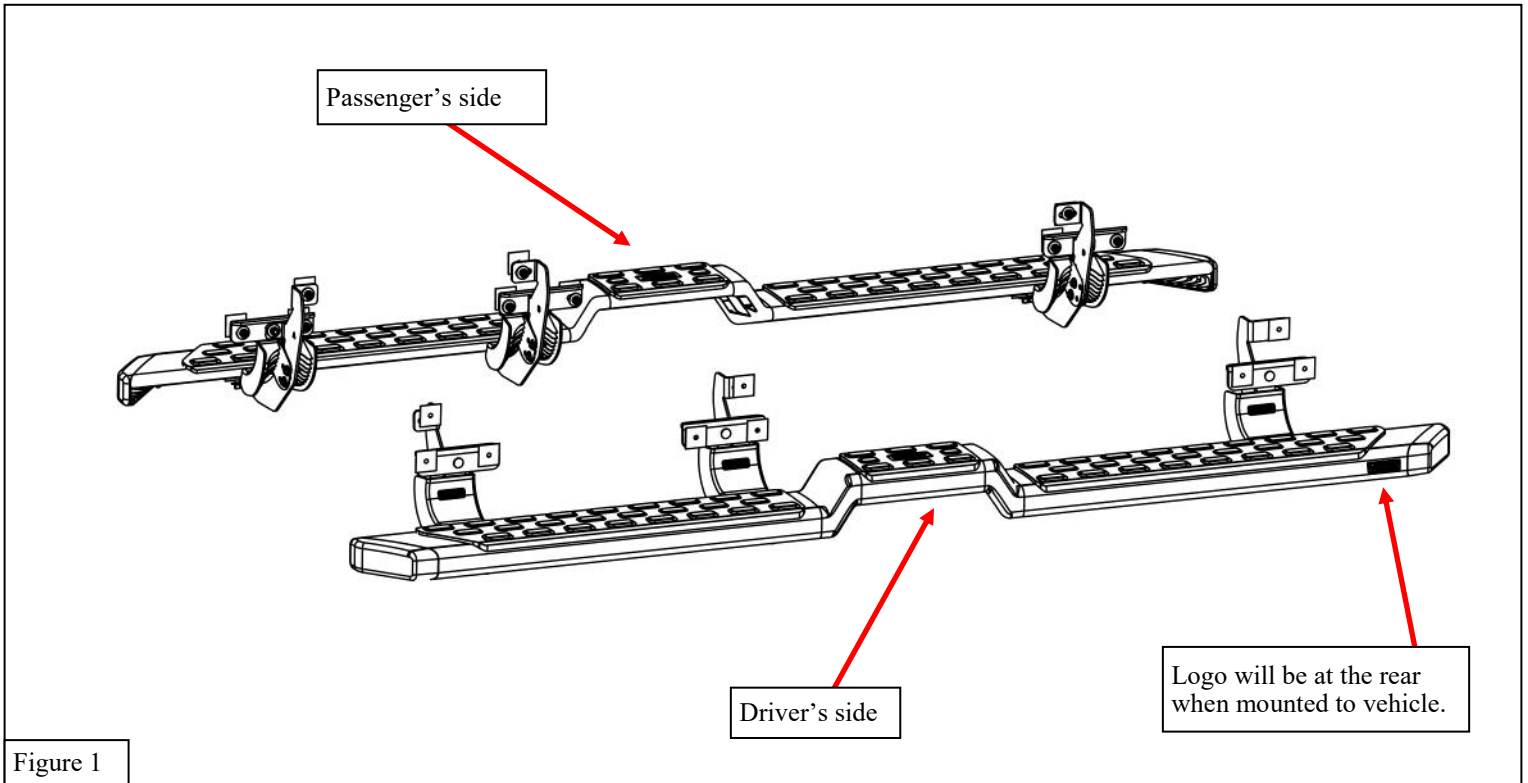
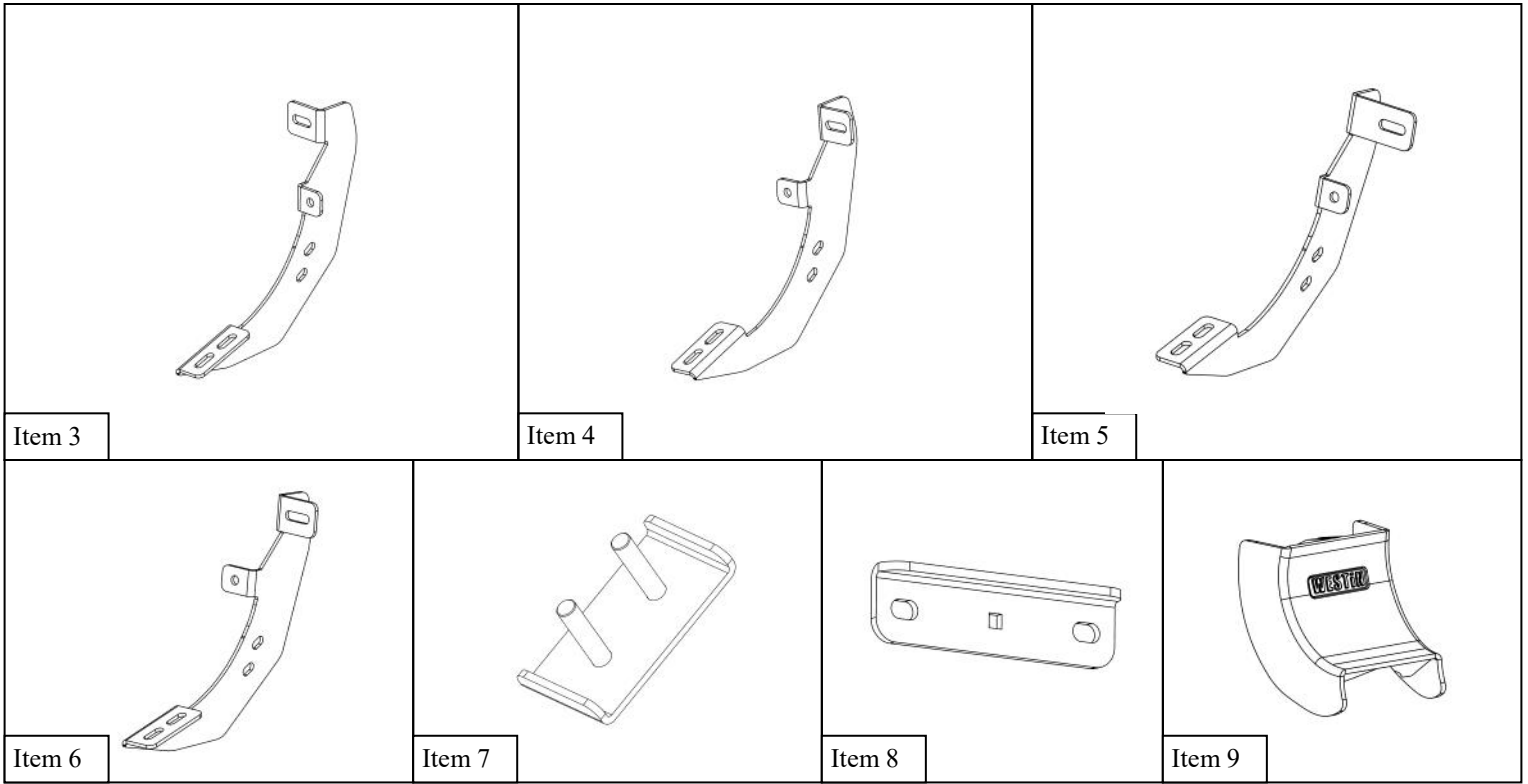
Item 1

WESTIN Westin Automotive Products, Inc.
320 W. Covina Blvd
San Dimas, Ca. 91773

Thank you for choosing Westin products
for additional installation assistance please call
Customer Service (800) 793-7846

www.westinautomotive.com

DATE: 07/29/2024



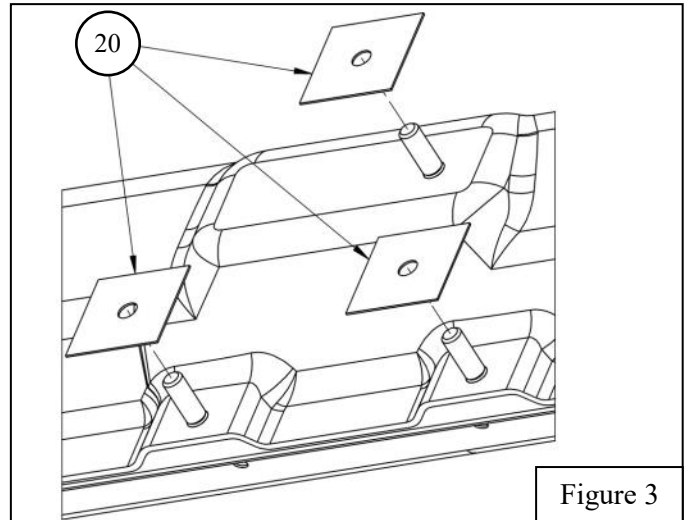
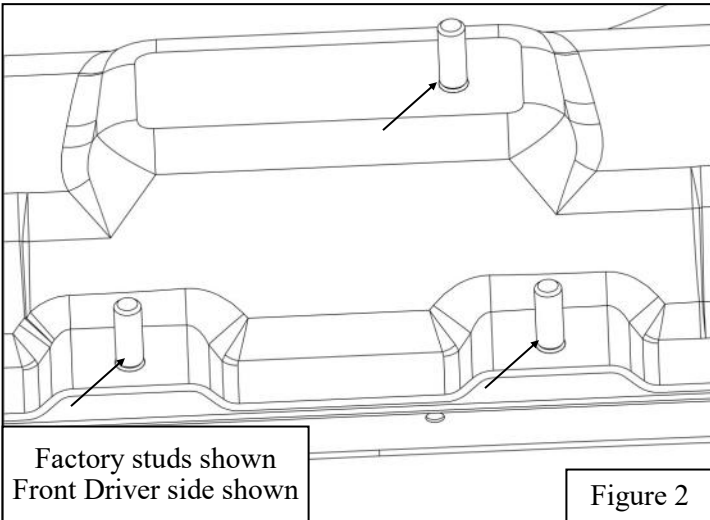
PROCEDURE

1. Remove contents from box, verify that all parts listed are present and free from damage. Carefully read and understand all instructions before attempting installation.
Failure to identify damage before installation could lead to a rejection of any claim.

2. Start installation on driver's side. On the rocker panel find locations of factory studs. In each location there should be 3 studs. See **Figure 2**.

Note: Super Cab has two locations and Super Crew has three locations)

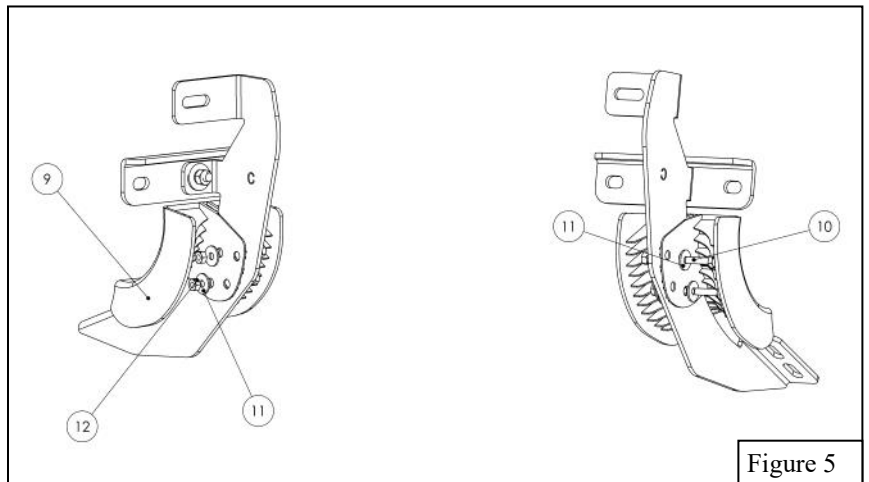
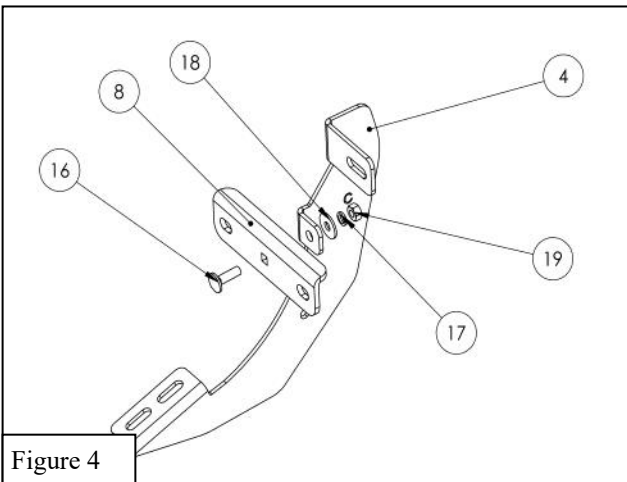
3. Insert 1 M8 Plastic Retainer (Item 20) on each factory stud. See **Figure 3**



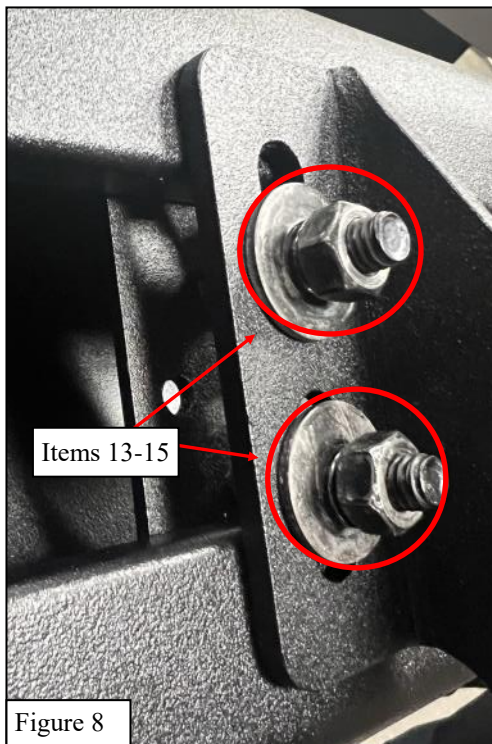
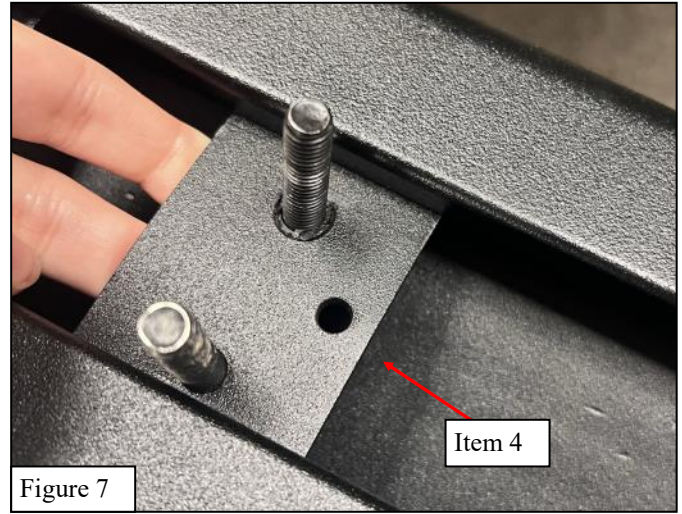
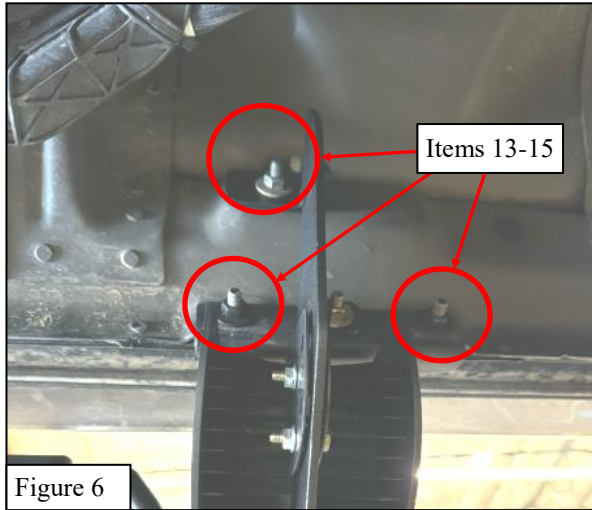
4. Insert the M8 round head square neck bolt (Item 16) through the Universal Mounting Bracket's (Item 8) square hole. Then insert the M8 round head square neck bolt through mounting brackets (Item 3 - 6) bottom circular hole. Loosely secure with (1) M8 hex nut, (1) M8 split lock washer, and (1) M8 flat washer. See **Figure 4**

5. Attach the (6) bracket covers (Item 9) onto all the mounting brackets using the M6 hex head cap crews (Items 10-12) See **Figure 5**.

Note: See page 3 for bracket cover orientation



6. Align sub-assembly with the 3 factory studs. Lower 2 factory studs will align with the Universal Mounting Bracket and top factory stud will align with mounting brackets. Loosely secure sub-assembly with (3) M8 hex nut, (3) M8 split lock washer, and (3) M8 flat washer (Items 13-15) . See **Figure 6**.
7. Insert the plate adapters (Items 7) into board assemblies (Item 1 &2) by first putting them in parallel to the board, then turning them 90 degrees to be perpendicular to the board. (Make sure the plate hooks onto the bottom of the bracket, and the screws are facing outwards. See **Figure 7**.
Note: Put 2 adapter plates in the front side and 1 in the back.
8. Install the running board onto the previously installed brackets using the supplied M8 hardware (Item 13-15). See **Figure 8**
Note: Make sure the plate adapters align with the brackets to attach the board to the mounting brackets.)
9. Align step bar and brackets to desired positioning then torque and tighten all: M8 hardware to 20ft-lbs and M6 hardware to 7.4 ft-lbs.



INSTALLATION COMPLETE



CARE INSTRUCTIONS

- REGULAR WAXING IS RECOMMENDED. DO NOT USE ANY TYPE OF POLISH OR WAX THAT MAY CONTAIN ABRASIVES.
- STAINLESS STEEL PRODUCTS CAN BE CLEANED WITH MILD SOAP AND WATER. STAINLESS STEEL POLISH SHOULD BE USED TO POLISH SMALL SCRATCHES.
- GLOSS BLACK FINISHES SHOULD BE CLEANED WITH MILD SOAP AND WATER.

WESTIN Westin Automotive Products, Inc.
320 W. Covina Blvd
San Dimas, Ca. 91773

Thank you for choosing Westin products
for additional installation assistance please call
Customer Service (800) 793-7846
www.westinautomotive.com



WARNING



Failure to follow these instructions could lead to death, personal injury, and / or property damage.

Failure to follow these instructions could lead to death, personal injury, and / or property damage.

FASTENERS:

All Westin supplied fasteners must be utilized and installed in accordance with the installation instructions and apply torque to the specifications as defined. **DOUBLE CHECK ALL FASTENERS BEFORE INITIAL USE, AND PERIODICALLY IN THE FUTURE TO ENSURE PROPER FUNCTION AND SAFETY.**

DRILLING:

Most Westin products do not require drilling for installation. If drilling is defined as required, use caution when drilling a vehicle. **FAILURE TO REVIEW AN AREA TO BE DRILLED MAY RESULT IN PERSONAL INJURY AND/OR INJURY TO OTHERS AS WELL AS VEHICLE DAMAGE.**

EYE PROTECTION:

ALWAYS WEAR SAFETY GLASSES OR GOGGLES DURING THE INSTALLATION PROCESS TO AVOID PERSONAL INJURY.

MAXIMUM TOWING/CARRYING CAPACITY: (if applicable)

The Westin Receiver Hitches will have a visible tow rating label affixed directly on the product. User should never exceed the vehicle manufacturers maximum tow and weight rating regardless of the capacity of the hitch. **FAILURE TO FOLLOW THESE GUIDELINES WILL VOID THE WESTIN WARRANTY AND MAY RESULT IN PERSONAL INJURY AND/OR INJURY TO OTHERS AS WELL AS VEHICLE DAMAGE.**

FOR CALIFORNIA RESIDENTS ONLY-PROP 65 WARNING:

Some products may contain chemicals such as DEHP, which can cause cancer, birth defects or other reproductive harm. For more info go to www.p65warnings.ca.gov



Westin Automotive Products, Inc.
320 W. Covina Blvd
San Dimas, Ca. 91773